

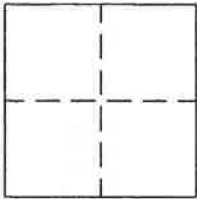
CORNER RECORD

Document Number 317

Section 36, T. 23 N., R. 13 E., M.D.M.

County of Plumas, State of California

Brief Legal Description: Lot 2, Block 34, Northern Addition to Portola, A Maps 32



CORNER TYPE

Government Corner Control
Meander Property
Rancho Other
Date of Survey 12-13-05

COORDINATES
(Optional)

N. _____
E. _____
Zone _____ Datum _____
Elev. _____

Corner-- Left as found Found and tagged Established Reestablished Rebuilt

Identification and type of corner found: Evidence used to identify or procedure used to establish or reestablish the corner:
Found corners per 13 RS 119 to reestablish Lot corners as shown on attached sketch.

A description of the physical condition of the monument as found and as set or reset: Set 5/8" rebar with Aluminum Cap stamped LS 5620 for corners to Lot 2 as shown on attached sketch.

SURVEYOR'S STATEMENT

This Corner Record was prepared by me or under my direction in conformance with the Land Surveyors' Act on December 13, 2005.

Signed John L. Owen L.S. 5620
John L. Owen



COUNTY SURVEYOR'S STATEMENT

This Corner Record was received Dec. 29th 2005 and examined and filed January 13 2006.

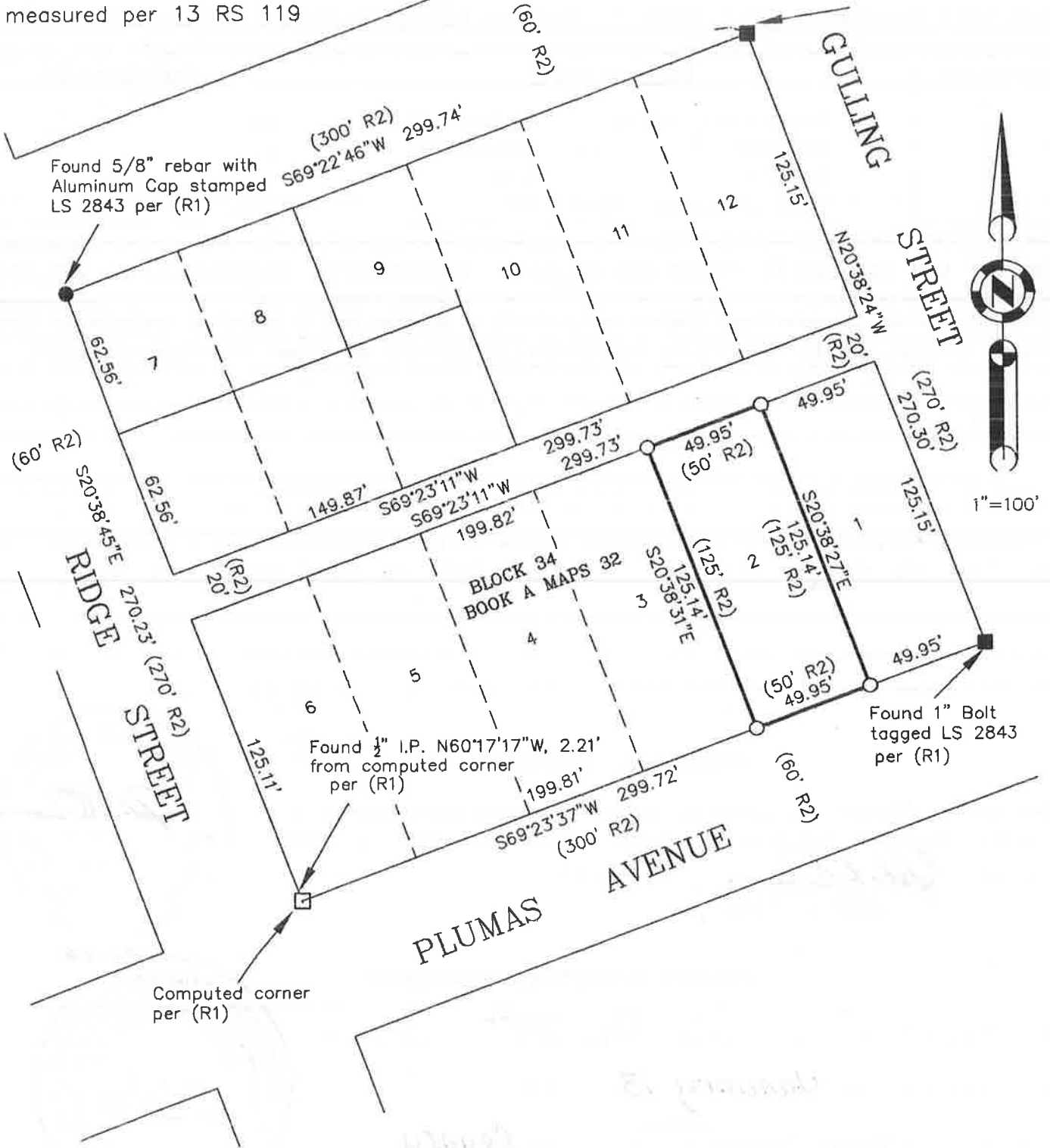
Signed Tom Hunter Title County Surveyor



County Surveyor's Comment _____

Note: Bearings and Distances for Block 34 are record and measured per 13 RS 119

Found 3/4" I.P. with wood plug tagged LS 2843 per (R1)



LEGEND

(R1) RECORD per 13 RS 119

(R2) RECORD per A Maps 32

■ FOUND point as described

○ SET 5/8" rebar with Aluminum Cap LS 5620

Lot 2, Block 34, Northern Addition to Portola, A Maps 32
 City of Portola
 Plumas County, California