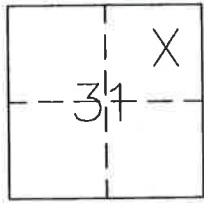


CORNER RECORD

Document Number 318

IN THE NE 1/4 OF SEC 31, T22N, R13E, MDM County of PLUMAS, California

Brief Legal Description LOT 8 OF WHITEHAWK RANCH PHASE II, 7 M 76-77



CORNER TYPE

COORDINATES (Optional)

Government Corner Control
Meander Property
Rancho Other
Date of Survey DECEMBER 23, 2005

N. _____
E. _____
Zone _____ Datum _____
Elev. _____

Corner— Left as found Found and tagged Established Reestablished Rebuilt

Identification and type of corner found: Evidence used to identify or procedure used to establish or reestablish the corner:
FOUND MONUMENTS INDICATED ON ATTACHED SKETCH IN GOOD CONDITION AND IN RECORD POSITION.

A description of the physical condition of the monument as found and as set or reset:
SET 5/8" REBAR WITH ALUMINUM CAP STAMPED LS 5620 AT LOCATION FOR MISSING CORNER AS SHOWN ON ATTACHED SKETCH.

SURVEYOR'S STATEMENT

This Corner Record was prepared by me or under my direction in conformance with the Land Surveyors' Act on December 28, 2005.

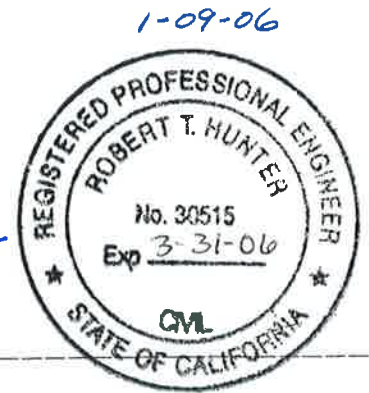
Signed John L. Owen L.S. 5620
John L. Owen



COUNTY SURVEYOR'S STATEMENT

This Corner Record was received Jan. 12th 2006 and examined and filed Feb 14th 2006.

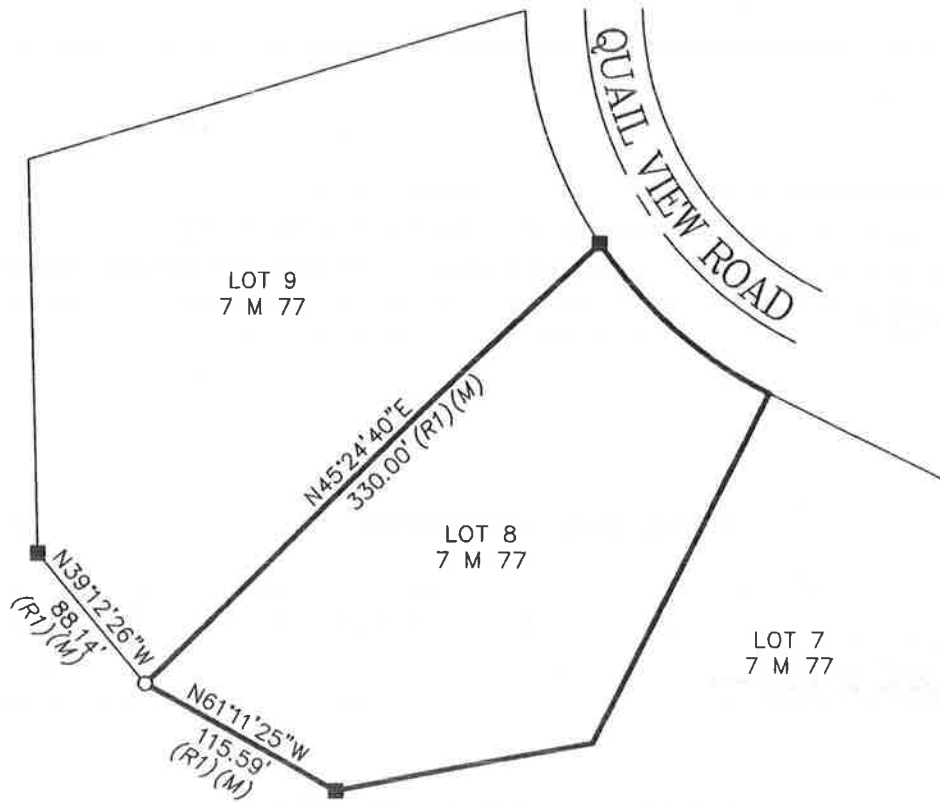
Signed R. Tom Hunter Title County Surveyor



County Surveyor's Comment _____



1" = 100'



LEGEND

- FOUND 5/8" Rebar with Aluminum Cap RCE 13225 *Per (R1)*
- SET 5/8" Rebar & Aluminum Cap LS 5620
- (R1) RECORD per 7 M 76-77
- (M) Measured

Hamby Surveying Inc.
P.O. Box 1209
Portola, CA 96122
(530) 832-5571