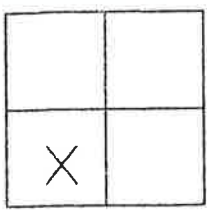


CORNER RECORD

Document Number 320

IN THE SW 1/4 OF SEC. 21, T23N, R14E, MDM County of PLUMAS, California

Brief Legal Description PARCEL 2 OF 5 PM 9



CORNER TYPE

Government Corner Control
Meander Property
Rancho Other
Date of Survey January 12, 2006

COORDINATES
(Optional)

N. _____
E. _____
Zone _____ Datum _____
Elev. _____

Corner-- Left as found Found and tagged Established Reestablished Rebuilt

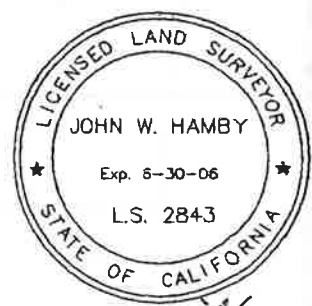
Identification and type of corner found: Evidence used to identify or procedure used to establish or reestablish the corner:
Found points as shown and described on attached sketch and as shown on 5 PM 9
and Corner Record # 135.

A description of the physical condition of the monument as found and as set or reset: _____
Found points in record position and in good condition and set points in record
position as shown on attached sketch.

SURVEYOR'S STATEMENT

This Corner Record was prepared by me or under my direction in conformance with the Land Surveyors' Act on January 12, 2006.

Signed John W. Hamby L.S. 2843
John W. Hamby



COUNTY SURVEYOR'S STATEMENT

This Corner Record was received Feb 10th 2006 and examined and filed February 21 2006.

Signed R. Tom Hunter Title County Surveyor



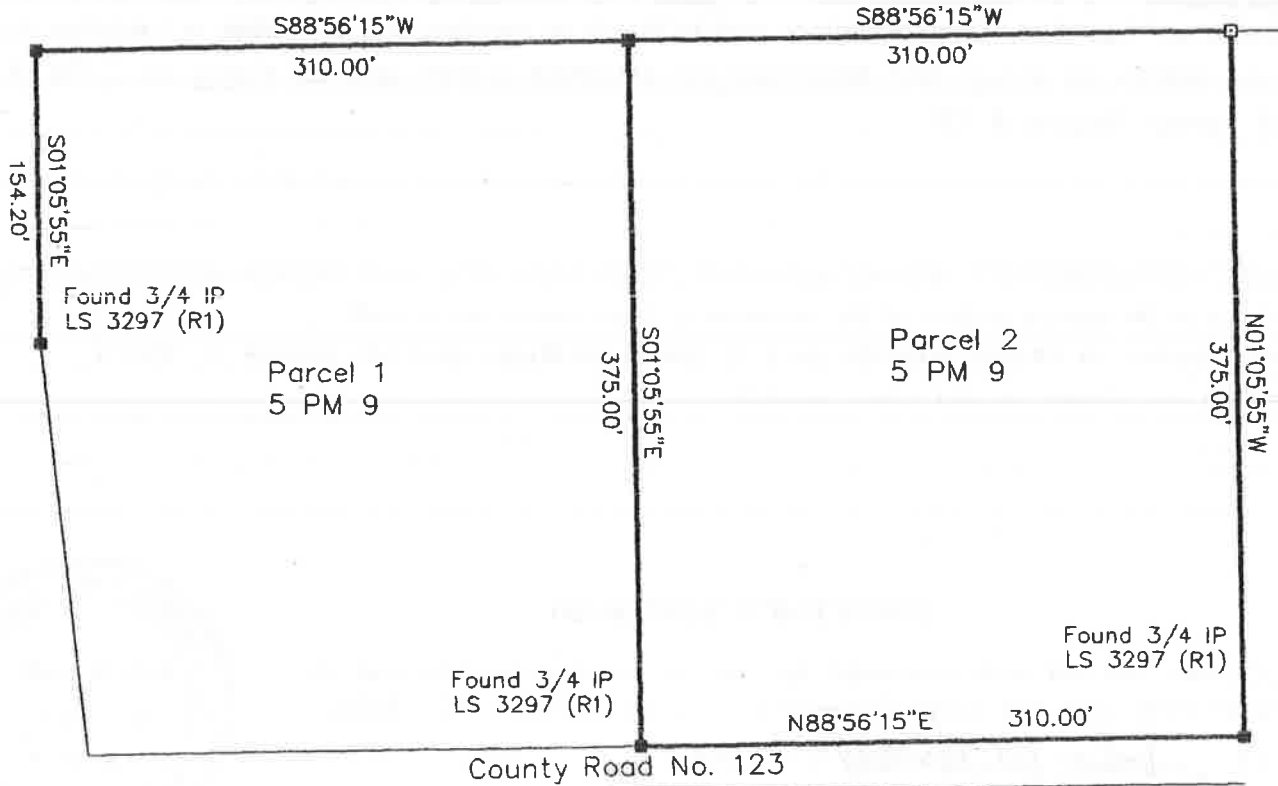
County Surveyor's Comment _____

Note:
 All Bearings and Distances are Record
 and Measured per 5 PM 9

Found 5/8" Rebar with
 Al. Cap LS 2843 (R2)

Found 5/8" Rebar with
 Al. Cap LS 2843 (R2)

Set 5/8" Rebar with
 Al. Cap LS 2843



LEGEND

- FOUND point as described
- SET Rebar with Aluminum Cap LS 2843
- Found Nothing, Set Nothing
- (R1) RECORD per 5 PM 9
- (R2) RECORD per Corner Record # 135



1" = 100'

05078

Hamby Surveying Inc.
 P.O. Box 1209
 Portola, CA 96122
 (530) 832-5571