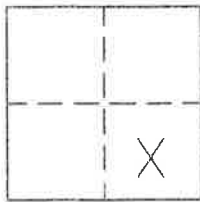


CORNER RECORD

Document Number 321

IN THE SE1/4 OF SEC.36, T23N.,R13E.,MDM County of PLUMAS, California

Brief Legal Description BLOCK 13, EASTERN ADDITION TO PORTOLA, A MAPS 27



CORNER TYPE

Government Corner Control
Meander Property
Rancho Other
Date of Survey DECEMBER, 2005

COORDINATES (Optional)

N. _____
E. _____
Zone _____ Datum _____
Elev. _____

Corner-- Left as found Found and tagged Established Reestablished Rebuilt

Identification and type of corner found: Evidence used to identify or procedure used to establish or reestablish the corner:
FOUND MONUMENTS INDICATED ON ATTACHED SKETCH IN GOOD CONDITION AND IN RECORD POSITION. PER
CORNER RECORD # 203

A description of the physical condition of the monument as found and as set or reset: _____
SET 5/8" REBAR WITH ALUMINUM CAP STAMPED LS 5620 AT LOCATION FOR MISSING CORNERS AS SHOWN
ON ATTACHED SKETCH.

SURVEYOR'S STATEMENT

This Corner Record was prepared by me or under my direction in conformance with the Land Surveyors' Act on February 21, 2006.

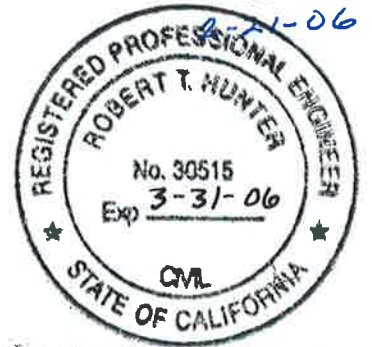
Signed John L. Owen L.S. 5620
John L. Owen



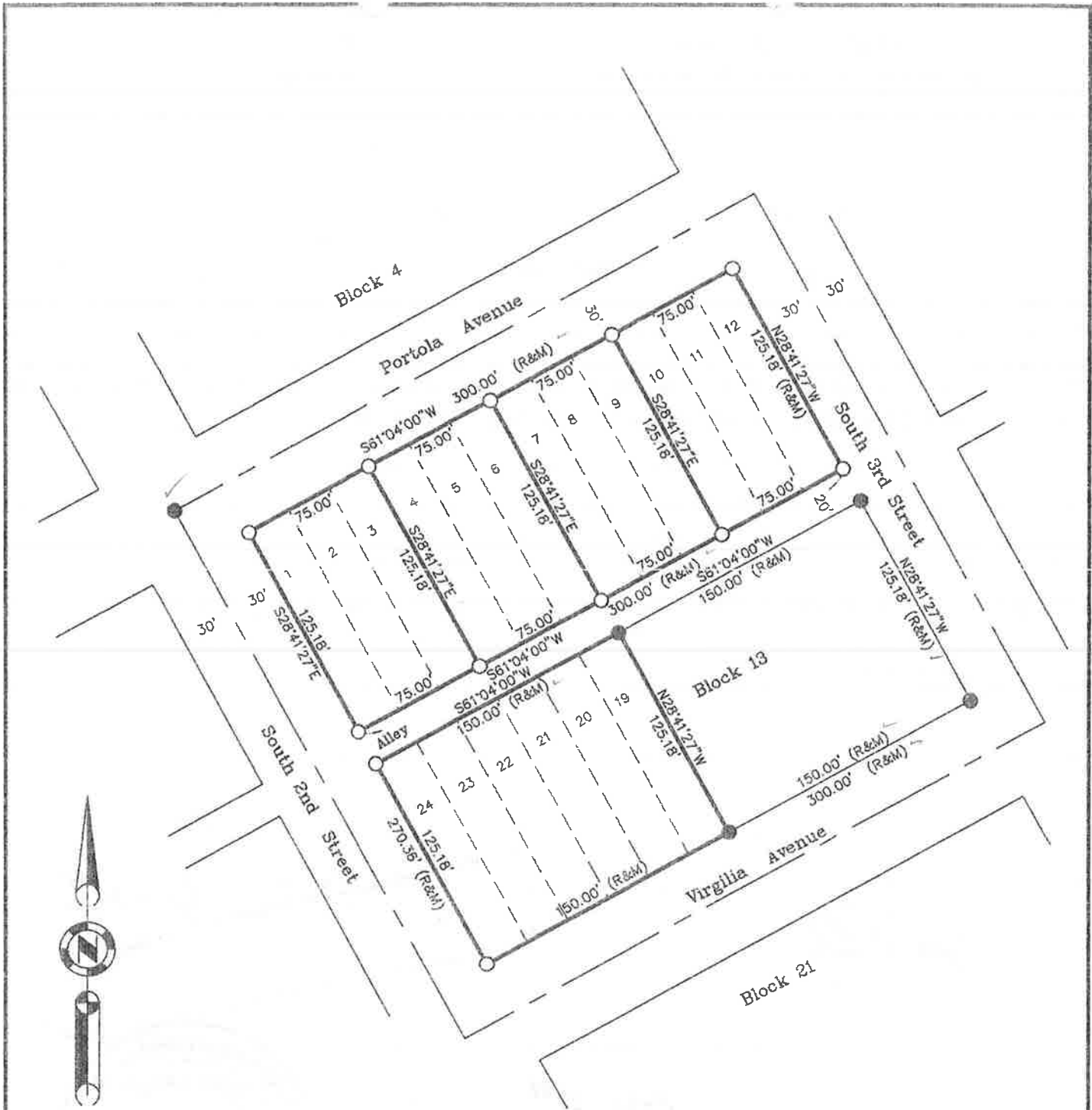
COUNTY SURVEYOR'S STATEMENT

This Corner Record was received Feb. 21st 2006 and examined and filed March 6 2006.

Signed R. Tom Glunde Title County Surveyor



County Surveyor's Comment _____



1" = 80'

LEGEND

- FOUND Rebar with Aluminum Cap LS 2843 per CR #203
- SET 5/8" Rebar & Aluminum Cap LS 5620
- (R&M) RECORD per CR #203
- CR Corner Record on file in Engineers Department

**Block 13
Eastern Addition to Portola
Book A Page 27**

Portion of Section 36, T.23N., R.13E
M.D.M.
Portola Plumas County, California
Scale: 1" = 80' January, 2006

Hamby Surveying Inc.
P.O. Box 1209
Portola, CA 96122
(530) 832-5571