

CORNER RECORD

Document Number 323

Nearest Town Quincy
County of Plumas, California

The property corners of Lot 9 of the Claremont Village Subdivision Addition No. 5, Book 4 of Subdivision Maps pages 119 & 120, Plumas County Records, as shown in Book 12 of Records of Surveys at page 141. Within the Northwest $\frac{1}{4}$ of Section 24, Township 24 North, Range 9 East, Mount Diablo Meridian.

CORNER TYPE

Property corner

Date of Survey June 8, 2006

Corner- Left as found Found and tagged Established
Reestablished Rebuilt

Identification and type of corner found: Evidence used to identify or procedure used to establish or reestablish the corner:

See Sketch - Page 2

A description of the physical condition of the monument as found and as set or reset:

See Sketch - Page 2

SURVEYOR'S STATEMENT

THIS CORNER RECORD WAS PREPARED BY ME OR UNDER MY DIRECTION IN CONFORMANCE WITH THE LAND SURVEYOR'S ACT ON JUNE 8, 2006.

Signed Gerald Joseph Tibbedeaux P.L.S. 6051
Gerald Joseph Tibbedeaux



COUNTY SURVEYORS STATEMENT

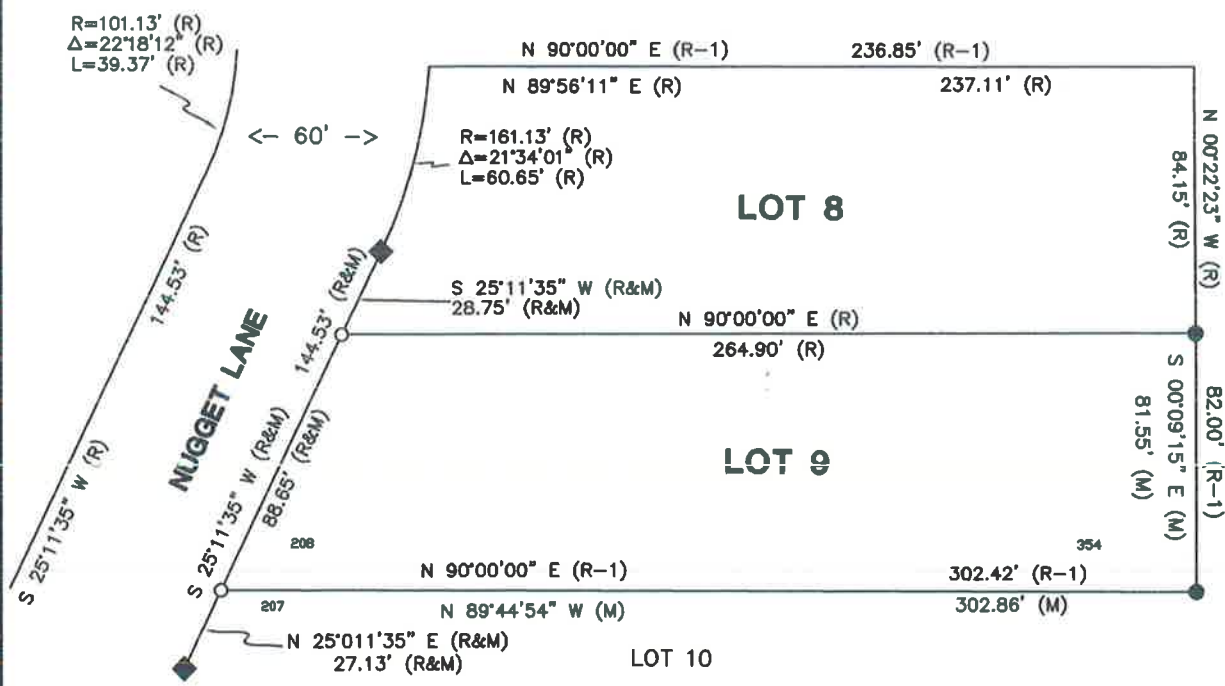
THIS CORNER RECORD WAS RECEIVED June 15th, 2006

AND EXAMINED AND FILED June 27th, 2006

Signed R. Tom Hunter R.C.E. 30515
R. Tom Hunter
Plumas County Surveyor



County Surveyor's Comment

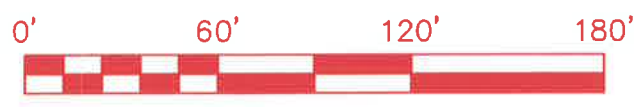


R=101.13' (R)
 $\Delta=22^{\circ}18'12''$ (R)
 L=39.37' (R)

R=161.13' (R)
 $\Delta=21^{\circ}34'01''$ (R)
 L=60.65' (R)

LEGEND

- ◆ FOUND 1/2 INCH REBAR AND PLASTIC CAP P.L.S. 8051 (R)
- SET 1/2" REBAR AND ALUMNMIUM CAP P.L.S. 6051
- FOUND 1/2 INCH REBAR AND PLASTIC CAP L.S. 3297 (R-1)
- (R) RECORD PER INFORMATION 12 RS 141
- (R-1) RECORD INFORMATION PER 4 M 119
- (M) MEASURED INFORMATION



**SKETCH OF MONUMENTATION OF LOT 9 OF CLAREMONT
 VILLAGE SUBDIVISION ADDITION NO. 5
 FOR
 BOB BAI TINGER**

BOOK 12 OF RECORDS OF SURVEYS, PAGE 141
 WITHIN SECTION 24, T. 24 N., R.9 E., M.D.M.
 PLUMAS COUNTY CALIFORNIA
 SCALE 1 INCH =60 FEET JUNE, 2006

Tibbedeaux Surveying
 PO Box 1960 - 565 Ridge Street
 Portola, CA 96122
 (530) 832-5772
 2006-11