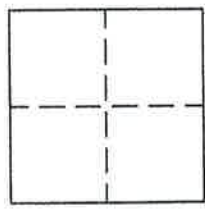


Portion Section 8, T. 22 N., R. 12 E., M.D.M. County of Plumas, California  
Brief Legal Description Lot 3, Plumas Eureka Estates, Unit 7 Phase II, 6 M 117



**CORNER TYPE**  
Government Corner  Control   
Meander  Property   
Rancho  Other   
Date of Survey 5-30-06

**COORDINATES**  
(Optional)  
N. \_\_\_\_\_  
E. \_\_\_\_\_  
Zone \_\_\_\_\_ Datum \_\_\_\_\_  
Elev. \_\_\_\_\_

Corner— Left as found  Found and tagged  Established  Reestablished  Rebuilt

Identification and type of corner found: Evidence used to identify or procedure used to establish or reestablish the corner:  
Found 5/8" rebar with Plastic Caps stamped LS 5055 at Northwest corner of Lot 3 and Northeast corner of Lot 7 and PT of curve on North side of Tamarack Place from which I reestablished the Northeast corner of Lot 3 as shown on attached sketch.

A description of the physical condition of the monument as found and as set or reset: Set 5/8" rebar with Aluminum Cap stamped LS 5620 at the Northeast corner of Lot 3 as shown on attached sketch.

**SURVEYOR'S STATEMENT**

This Corner Record was prepared by me or under my direction in conformance with the Land Surveyors' Act on May 30, 2006.

Signed John L. Owen L.S. 5620  
John L. Owen



**COUNTY SURVEYOR'S STATEMENT**

This Corner Record was received June 26<sup>th</sup> 2006 and examined and filed July 14 2006.

Signed Tom Hunter Title Plumas Co. Engineer

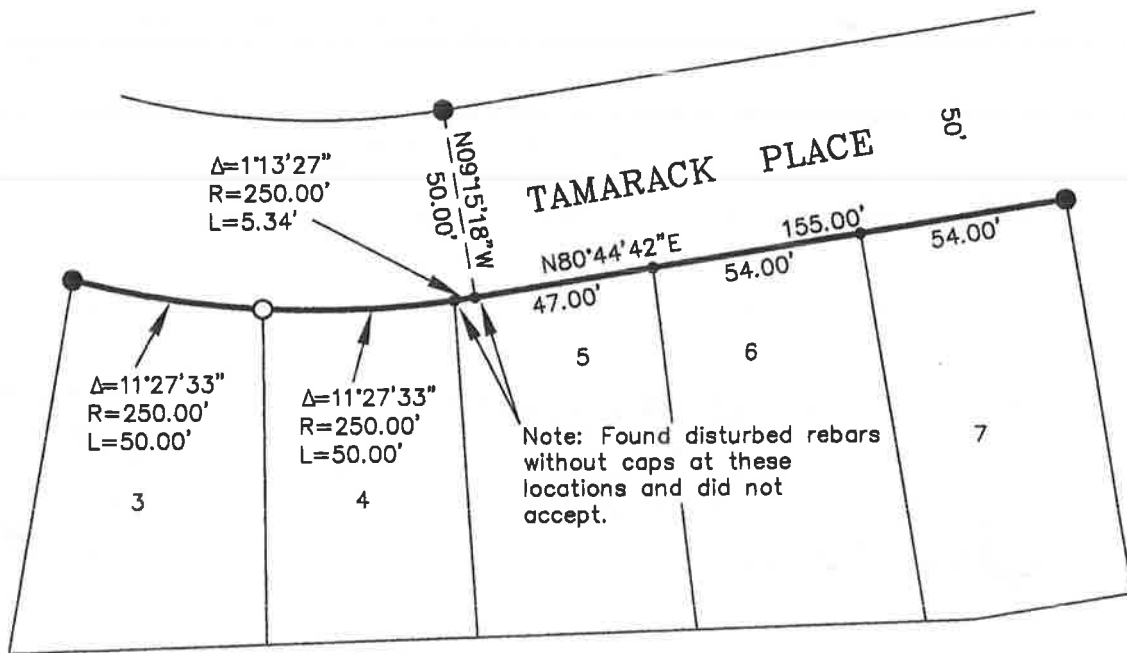


County Surveyor's Comment \_\_\_\_\_  
\_\_\_\_\_  
\_\_\_\_\_

NOTE: All bearings, distances and curve data shown are record per 6 M 117.



1" = 50'



## LEGEND

- FOUND 5/8" Rebar with Plastic Cap LS 5055 per 6 M 117
- SET 5/8" rebar with Aluminum Cap LS 5620
- Searched location, Nothing found or set unless noted

06106