

CORNER RECORD

Document Number 325

NE 1/4 Section 36, T.23N., R.13E., M.D.M.

County of Plumas, California

Brief Legal Description Lots 6, 7, & 8, Block 5, Northern Addition to Portola, A Maps 32

	X

CORNER TYPE

Government Corner Control
 Meander Property
 Rancho Other
 Date of Survey 5-24-06

COORDINATES (Optional)

N. _____
 E. _____
 Zone _____ Datum _____
 Elev. _____

Corner- Left as found Found and tagged Established Reestablished Rebuilt

Identification and type of corner found: Evidence used to identify or procedure used to establish or reestablish the corner:
Found controlling corners of Blocks 4 and 5 per 13 RS 55 from which I set corners
for outside boundary to Lots 6 through 8 in Block 5 as shown on attached sketch.

A description of the physical condition of the monument as found and as set or reset: Set 5/8" rebars with
Aluminum Cap stamped LS 5620 for outside boundary to Lots 6 through 8 in Block 5
as shown on attached sketch.

SURVEYOR'S STATEMENT

This Corner Record was prepared by me or under my direction in conformance with the Land Surveyors' Act on July 10, 2006.

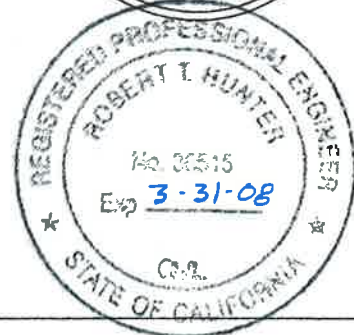
Signed _____ L.S. 5620
John L. Owen



COUNTY SURVEYOR'S STATEMENT

This Corner Record was received July 19th 2006 and
 examined and filed August 8 2006.

Signed R. Tom Hunter Title County
Surveyor



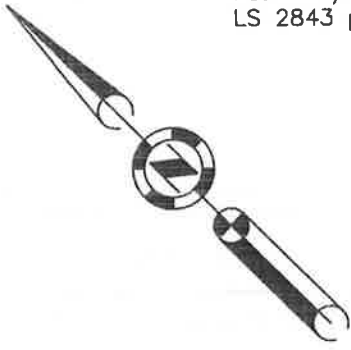
County Surveyor's Comment _____

Note: All bearings and Distance are the same as shown on 13 RS 55.

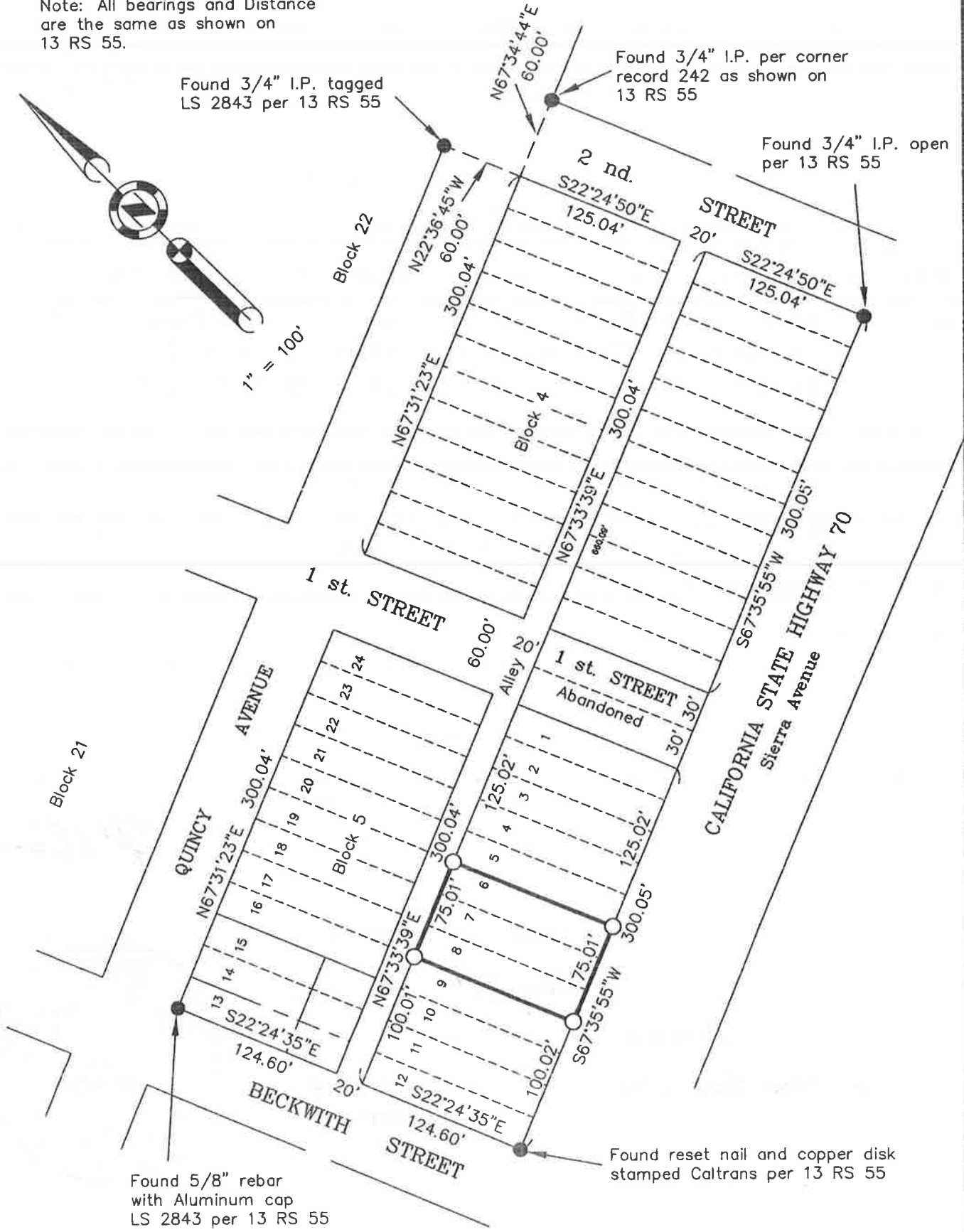
Found 3/4" I.P. tagged LS 2843 per 13 RS 55

Found 3/4" I.P. per corner record 242 as shown on 13 RS 55

Found 3/4" I.P. open per 13 RS 55



1" = 100'



Found 5/8" rebar with Aluminum cap LS 2843 per 13 RS 55

Found reset nail and copper disk stamped Caltrans per 13 RS 55