

CORNER RECORD

Document Number 326

Nearest Town Quincy
County of Plumas, California

Recovered and tagged the Southwest corner of Lot 26, Book 5 of Subdivision Maps at page 107, Countryman Estates within the Northwest 1/4 of Section 12, Township 23 North, Range 7 East, Mount Diablo Meridian.

CORNER TYPE

Property corner

Date of Survey June 21, 2006

Corner- Left as found Found and tagged Established
Reestablished Rebuilt

Identification and type of corner found: Evidence used to identify or procedure used to establish or reestablish the corner:

See Sketch - Page 2

A description of the physical condition of the monument as found and as set or reset:

See Sketch - Page 2

SURVEYOR'S STATEMENT

THIS CORNER RECORD WAS PREPARED BY ME OR UNDER MY DIRECTION IN CONFORMANCE WITH THE LAND SURVEYOR'S ACT ON JUNE 21, 2006.

Signed Gerald Joseph Tibbedeaux P.L.S. 6051
Gerald Joseph Tibbedeaux



COUNTY SURVEYORS STATEMENT

THIS CORNER RECORD WAS RECEIVED June 27th, 2006

AND EXAMINED AND FILED August 8, 2006

Signed R. Tom Hunter R.C.E. 30515
R. Tom Hunter
Plumas County Surveyor License
Expires 03/31/08



County Surveyor's Comment

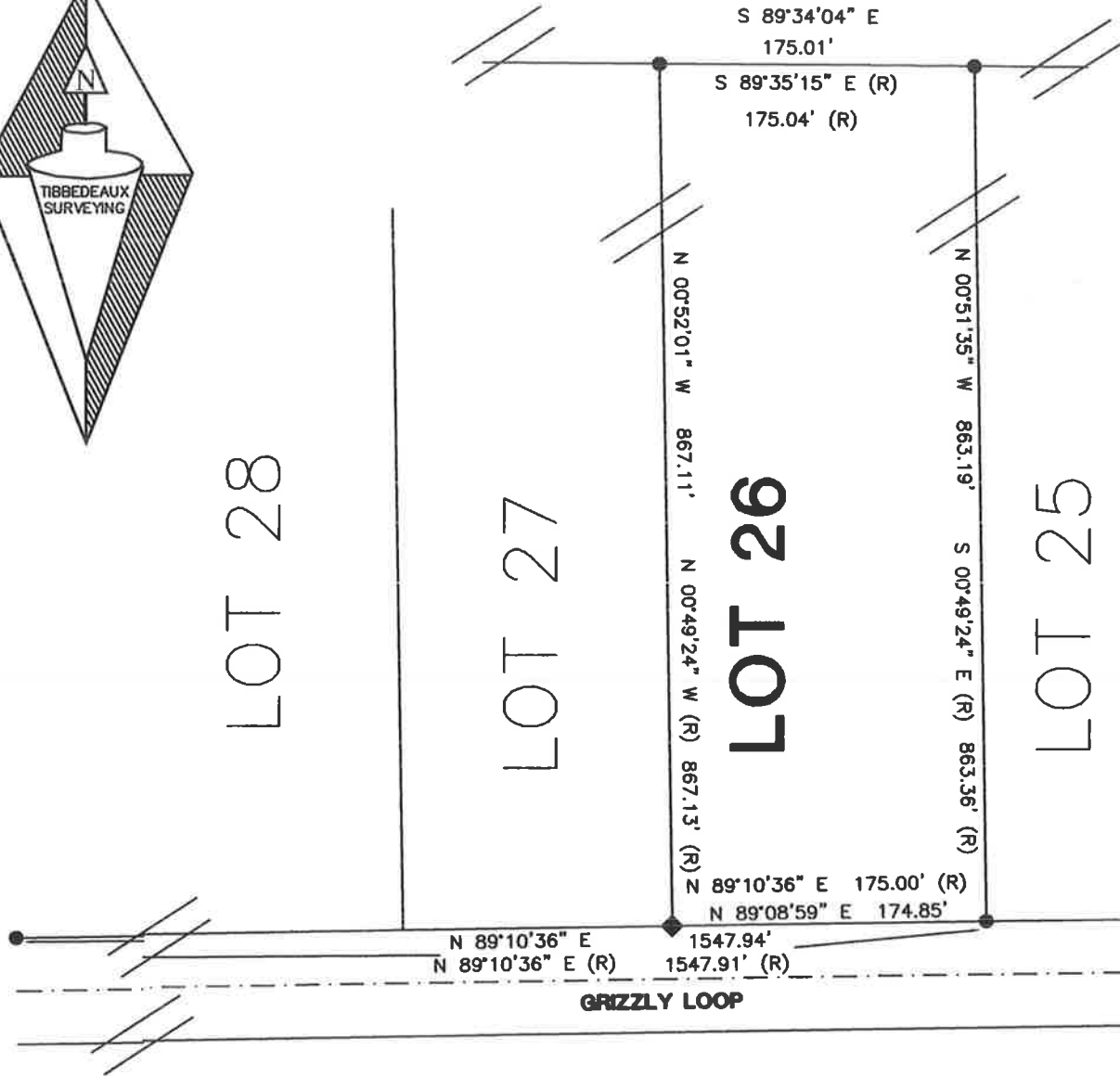


LOT 28

LOT 27

LOT 26

LOT 25



SKETCH OF MONUMENTATION RECOVERY
LOT 26 BOOK 5 OF SUBDIVISION MAPS PAGES 106-109
FOR
DAVE NORTON

WITHIN SECTION 12, T. 23 N., R. 7 E., M.D.M.
 PLUMAS COUNTY CALIFORNIA
 SCALE 1 INCH = 100 FEET JUNE, 2006

LEGEND

- ◆ FOUND 1/2 INCH REBAR, SET ALUMINUM CAP P.L.S. 6051
- FOUND 1/2 INCH REBAR AND CAP L.S. 4202 (R)
- (R) RECORD PER INFORMATION 5 M. 106

Tibbeteaux Surveying
 PO Box 1960 - 565 Ridge Street
 Portola, CA 96122
 (530) 832-5772
 2006-12