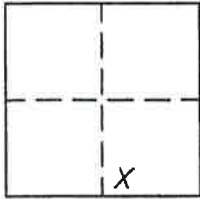


CORNER RECORD

Document Number 332

Portion of SW 1/4 Section 21, T. 23 N., R. 14 E., M.D.M. County of Plumas, California

Brief Legal Description \_\_\_\_\_



CORNER TYPE

Government Corner  Control   
Meander  Property   
Rancho  Other   
Date of Survey January 12, 2007

COORDINATES (Optional)

N. \_\_\_\_\_  
E. \_\_\_\_\_  
Zone \_\_\_\_\_ Datum \_\_\_\_\_  
Elev. \_\_\_\_\_

Corner- Left as found  Found and tagged  Established  Reestablished  Rebuilt

Identification and type of corner found: Evidence used to identify or procedure used to establish or reestablish the corner:  
Found T-Bars with tags RCE 5569 per 6 RS 68 which were labled wrong on 9 PM 70  
on Southwest corner of Parcel 1 and found Aluminum Cap LS 2843 for South 1/4  
Corner of Section 21 as shown on 6 RS 68 and 9 PM 70 which was used to reestablish  
corners as shown on attached sketch.

A description of the physical condition of the monument as found and as set or reset: Corners missing were  
set with 5/8" rebar with Aluminum Cap stamped LS 5620 as shown on attached sketch.

SURVEYOR'S STATEMENT

This Corner Record was prepared by me or under my direction in conformance with the Land Surveyors' Act on January 26, 2007.

Signed John L. Owen L.S. 5620  
John L. Owen



COUNTY SURVEYOR'S STATEMENT

This Corner Record was received Feb. 1st 2007 and examined and filed \_\_\_\_\_ 2007.

Signed Robert T. Hunter Title County Surveyor

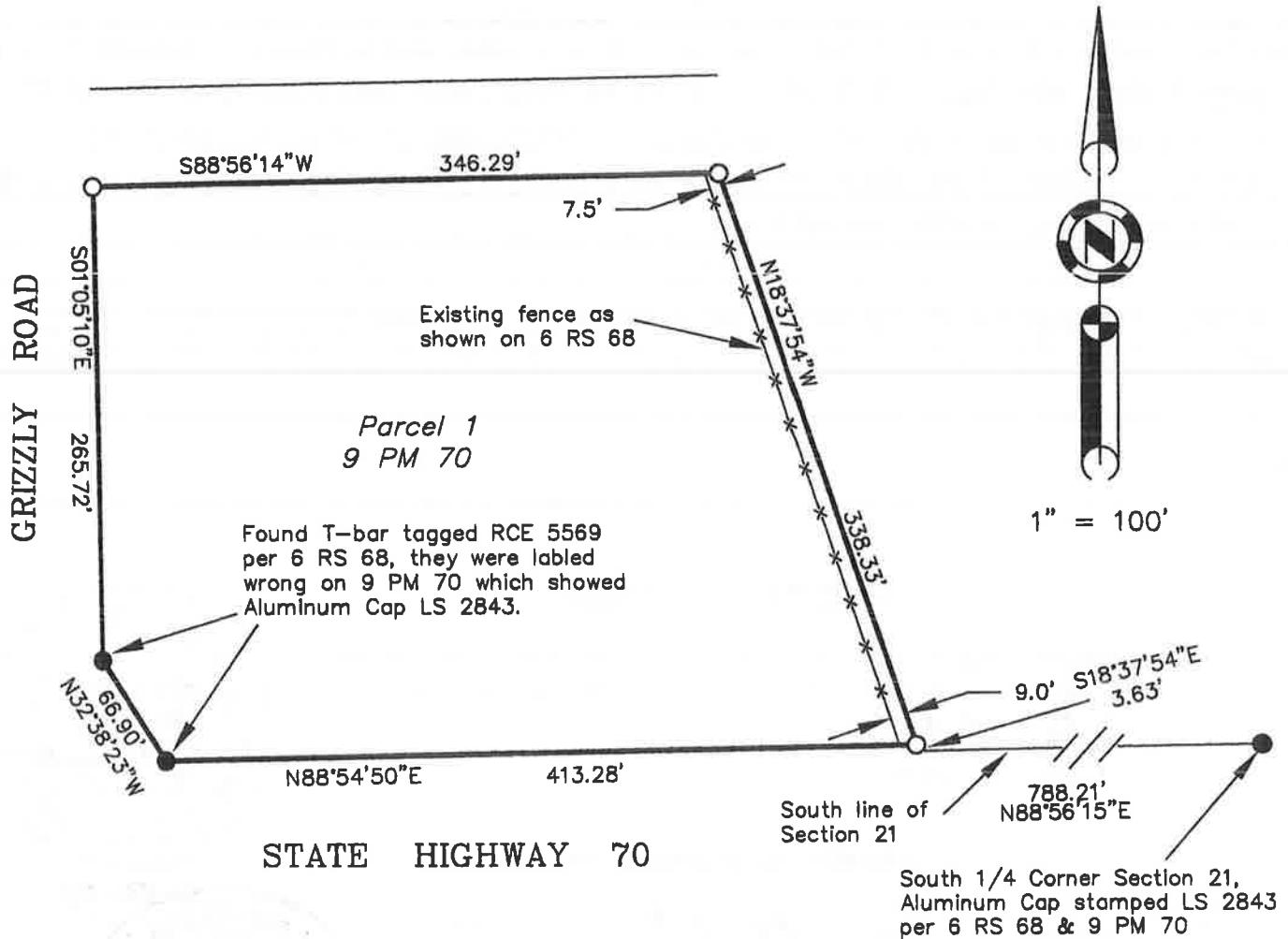


County Surveyor's Comment \_\_\_\_\_

All bearings and distances are record per 6 RS 68  
and 9 PM 70.

## LEGEND

- FOUND point as described
- SET 5/8" rebar with Aluminum Cap LS 5620



Parcel 1, 9 PM 70  
Portion of the SW 1/4  
of Section 21,  
T. 23 N., R. 14 E., M.D.M.

Hamby Surveying Inc.  
P.O. Box 1209  
Portola, CA 96122  
(530) 832-5571