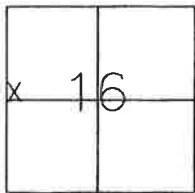


CORNER RECORD

Document Number 337

Portion of Section 16, T.23N., R.14 E. M.D.M. County of PLUMAS, California

Brief Legal Description LOT 174 OF GRIZZLY RANCH, UNIT 4 9 M 141



CORNER TYPE

Government Corner  Control   
 Meander  Property   
 Rancho  Other   
 Date of Survey January 15, 2007

COORDINATES (Optional)

N. \_\_\_\_\_  
 E. \_\_\_\_\_  
 Zone \_\_\_\_\_ Datum \_\_\_\_\_  
 Elev. \_\_\_\_\_

Corner-- Left as found  Found and tagged  Established  Reestablished  Rebuilt

Identification and type of corner found: Evidence used to identify or procedure used to establish or reestablish the corner: Found 5/8" Rebar with Aluminum Cap stamped LS 2843 per 9 M 141 to reestablish

Lot Corners as shown on attached sketch.

A description of the physical condition of the monument as found and as set or reset: Set 5/8" Rebar with Aluminum Cap stamped LS 5620 for corners to Lot 174 as shown on attached sketch

SURVEYOR'S STATEMENT

This Corner Record was prepared by me or under my direction in conformance with the Land Surveyors' Act on January 15, 2007.

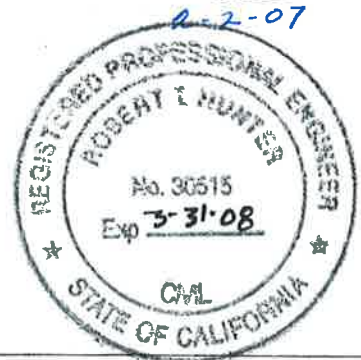
Signed John L. Owen L.S. 5620  
John L. Owen



COUNTY SURVEYOR'S STATEMENT

This Corner Record was received Feb. 13<sup>th</sup>, 2007 and examined and filed March 6<sup>th</sup>, 2007.

Signed R. Tom Hunter Title Plumas County Surveyor

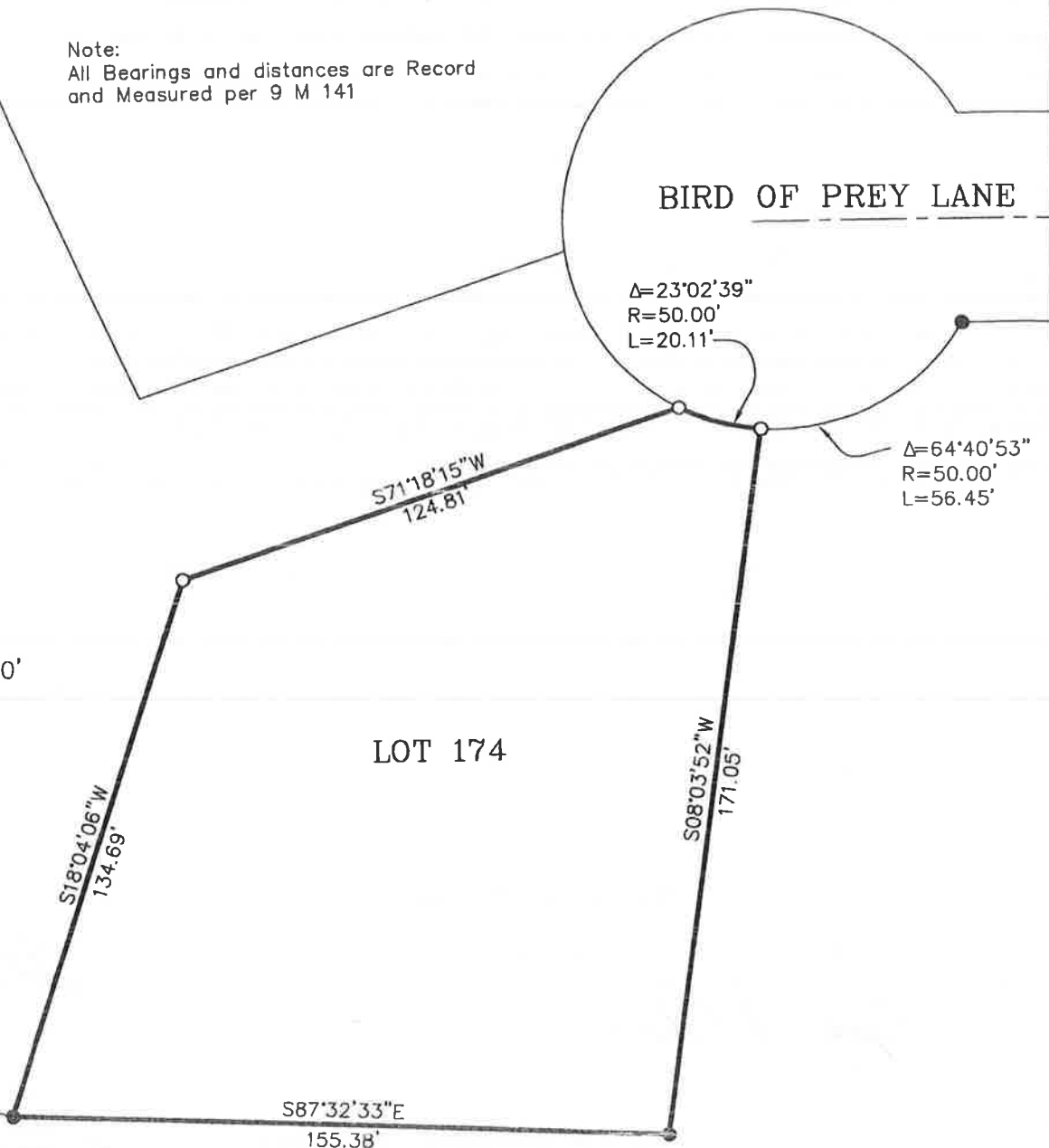


County Surveyor's Comment \_\_\_\_\_

Note:  
 All Bearings and distances are Record  
 and Measured per 9 M 141



1" = 40'



BIRD OF PREY LANE

$\Delta=23^{\circ}02'39''$   
 $R=50.00'$   
 $L=20.11'$

$\Delta=64^{\circ}40'53''$   
 $R=50.00'$   
 $L=56.45'$

LOT 174

Lot 174  
 Grizzly Ranch, Unit 4  
 Maps 141

Portion of Section 16, T.23N., R.14E  
 M.D.M.

Plumas County, California

Scale: 1" = 40' January, 2007

LEGEND

- FOUND Rebar with Aluminum Cap LS 2843
- SET 5/8" Rebar & Aluminum Cap LS 5620

Hamby Surveying Inc.  
 P.O. Box 1209  
 Portola, CA 96122  
 (530) 832-5571

06030