

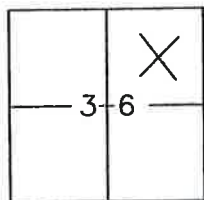
CORNER RECORD

Document Num 338

NE 1/4 S36, T23N R13E MDM

County of Plumas, California

Brief Legal Description Lots 4, 5 and 6 Block 25, Northern Addition to Portola Townsite
Book "A" Maps 32



CORNER TYPE

COORDINATES
(Optional)

Government Corner Control
 Meander Property
 Rancho Other
 Date of Survey 3-31-2007

N. _____
 E. _____
 Zone _____ Datum _____
 Elev. _____

Corner— Left as found Found and tagged Established Reestablished Rebuilt

Identification and type of corner found: Evidence used to identify or procedure used to establish or reestablish the corner:
Found monuments indicated on attached sketch in good condition and in record position.

A description of the physical condition of the monument as found and as set or reset: _____
Set 5/8" Rabar with Aluminum Cap stamped LS 5620 at location of Northwest corner
of Lot 6 Block 25 shown on 8 RS 139 as indicated on attached sketch.

SURVEYOR'S STATEMENT

This Corner Record was prepared by me or under my direction in conformance with the Land Surveyors' Act on March 30, 2007.

Signed John L. Owen L.S. 5620
John L. Owen



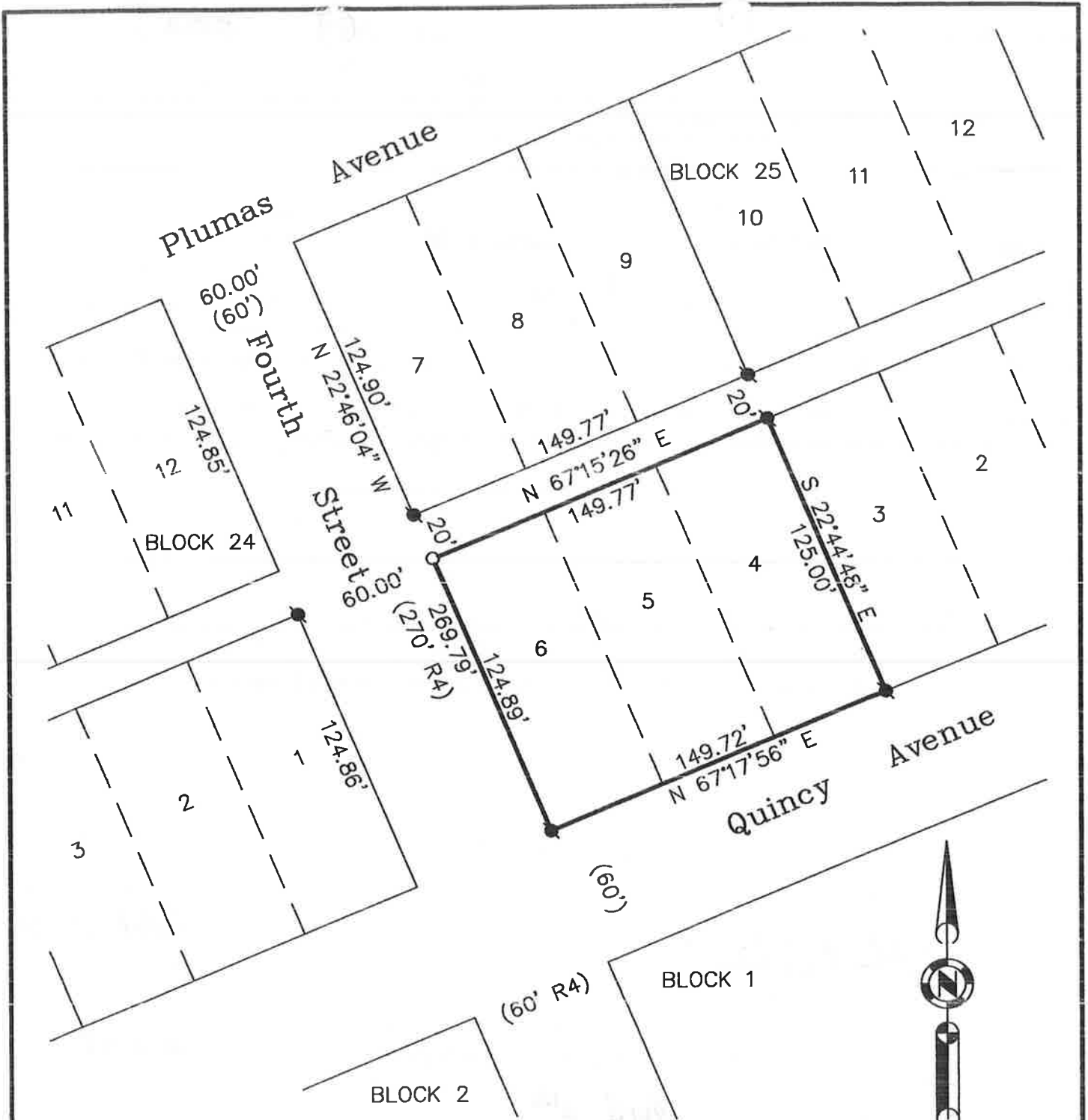
4-2-07

COUNTY SURVEYOR'S STATEMENT

This Corner Record was received April 2nd, 2007 and examined and filed May 7th 2007.

Signed R Tom Shuster Title County Surveyor

County Surveyor's Comment _____



LEGEND

1" = 60'



- FOUND Rebar with Plastic Cap LS 2843
- SET 5/8" Rebar with Aluminum Cap LS 5620

Bearings and Distances Shown
are Record and Measured per 8 RS 139

Hamby Surveying Inc.
P.O. Box 1209
Portola, CA 96122
(530) 832-5571

07036