

CORNER RECORD

Document Number 340
 County of Plumas, California

City of n/a
 Brief Legal Description S1/16 cor. of secs. 2 and 3, T27N, R10E, MDM, CA
 (GCDB 500620 // Index D-17)

CORNER TYPE		COORDINATES(Optional)	
<input type="checkbox"/>	Government Corner	<input checked="" type="checkbox"/>	Control
<input type="checkbox"/>	Meander	<input type="checkbox"/>	Property
<input type="checkbox"/>	Rancho	<input type="checkbox"/>	Other
Date of Survey <u>6/10/2006</u>		N. <u>n/a</u>	E. <u>n/a</u>
		Zone <u>n/a</u>	NAD27 <input type="checkbox"/> NAD83 <input type="checkbox"/>
		NAD83 Epoch <u>n/a</u>	Elev. <u>n/a</u>
		Vert. Datum: NGVD29 <input type="checkbox"/> NADV88 <input type="checkbox"/>	Meas. Units: Metric <input type="checkbox"/> Imperial <input checked="" type="checkbox"/>

Note: This is a cor. refurbishment. No survey tie to distant cors. performed.

Corner - Left as found Found and tagged Established Reestablished Rebuilt

Identification and type of corner found: Evidence used to identify or procedure used to establish or reestablish the corner:

Original position established, but not monumented, by GLO township plat approved February 23, 1881.
 This corner was monumented by Loren J. Sargent, LS 2322, during survey recorded March 7, 1975, in Plumas County Record of Surveys Book 4, page 79 (4-RS-79)
 Recovered Sargent bearing tree remains:
 A fir snag, 8 ins. diam., bears N. 60° E., 15.9 ft. dist.
 A cut stump, with decayed blaze, bears S. 84° W., 24.3 ft. dist.

A description of the physical condition of the monument as found and as set or reset:

Found a 3/4 in. diam. iron pipe, firmly set in good condition, with washer mkd. LS-2322, projecting 5 ins. above ground, in embedded rock collar, 1 1/2 ft. base to top.
 New bearing trees;
 A fir, 12 ins. diam., bears N. 28° E., 38.4 ft. dist., mkd. S1/16 S2 BT
 A cedar, 11 ins. diam., bears N. 84 1/4° W., 40.7 ft. dist., mkd. S1/16 S3 BT..

SURVEYOR'S STATEMENT

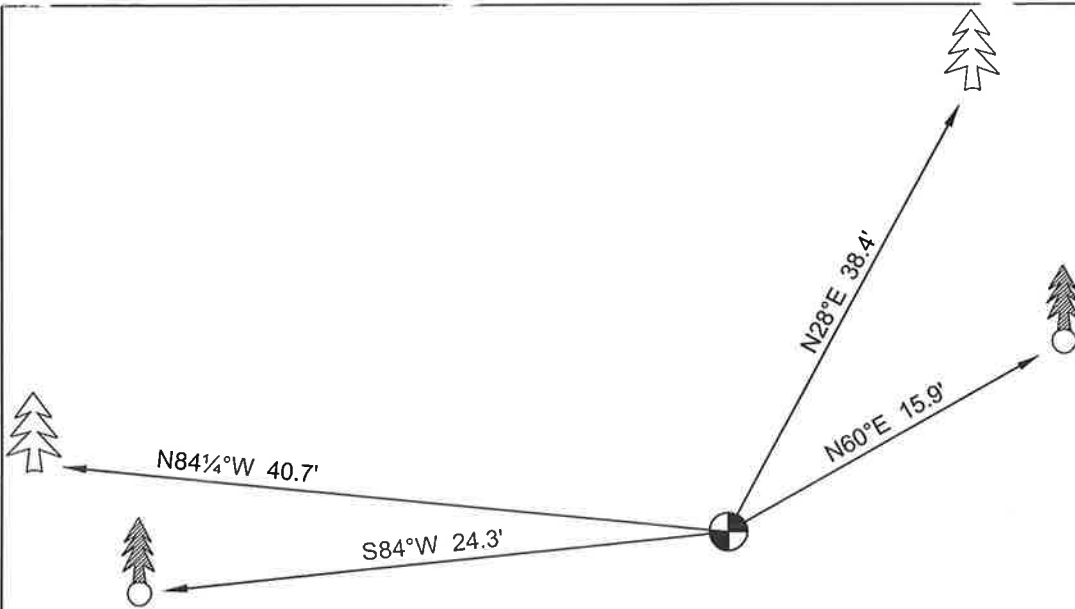
This Corner Record was prepared by me or under my direction in conformance with the Land Surveyors Act on April 23, 2007
 Signed: Ron C. Walter L.S. No.: 6501



COUNTY SURVEYOR'S STATEMENT

This Corner Record was received June 20th, 2007 and examined and filed June 25th, 2007
 Signed: R Tom Shunte P.L.S. or R.C.E. No.: RCE 30515
 Title County Surveyor
 County Surveyors Comment _____





Not to Scale

(GCDB 500620 // Index D-17)






S1/16 cor. of secs. 2 and 3
T27N, R10E, MDM, CA
Wallowa Associates - Ron Walter, LS
April 23, 2006

NOTES

1. The True Meridian is the Basis of Bearing.

LEGEND

-  Recovered LS-2322 (Sargent) monument.
-  Recovered LS-2322 (Sargent) bearing tree or remains.
-  New bearing tree - established this survey.