

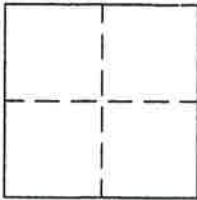
CORNER RECORD

Document Number 350

Section 8, T. 22 N., R. 12 E., M.D.M.

County of Plumas, California

Brief Legal Description Lot 25, Plumas-Eureka Estates Unit No. 2



CORNER TYPE

COORDINATES (Optional)

Government Corner Control
Meander Property
Rancho Other
Date of Survey May 8, 2007

N. _____
E. _____
Zone _____ Datum _____
Elev. _____

Corner- Left as found Found and tagged Established Reestablished Rebuilt

Identification and type of corner found: Evidence used to identify or procedure used to establish or reestablish the corner:
Found 1/2" rebars on curve returns per 4 M 96 as shown on attached sketch

A description of the physical condition of the monument as found and as set or reset: Set 5/8" rebar with Aluminum Cap stamped LS 5620 for missing corner between Lots 24 and 25 as shown on attached sketch.

SURVEYOR'S STATEMENT

This Corner Record was prepared by me or under my direction in conformance with the Land Surveyors' Act on May 11, 2007.

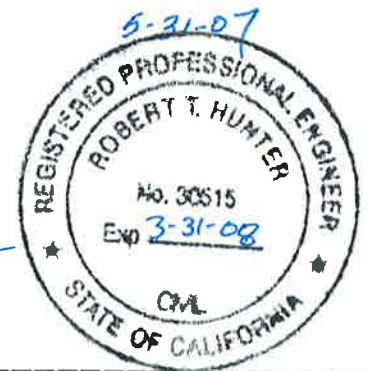
Signed John L. Owen L.S. 5620
John L. Owen



COUNTY SURVEYOR'S STATEMENT

This Corner Record was received 6/01 2007 and examined and filed 6/25 2007.

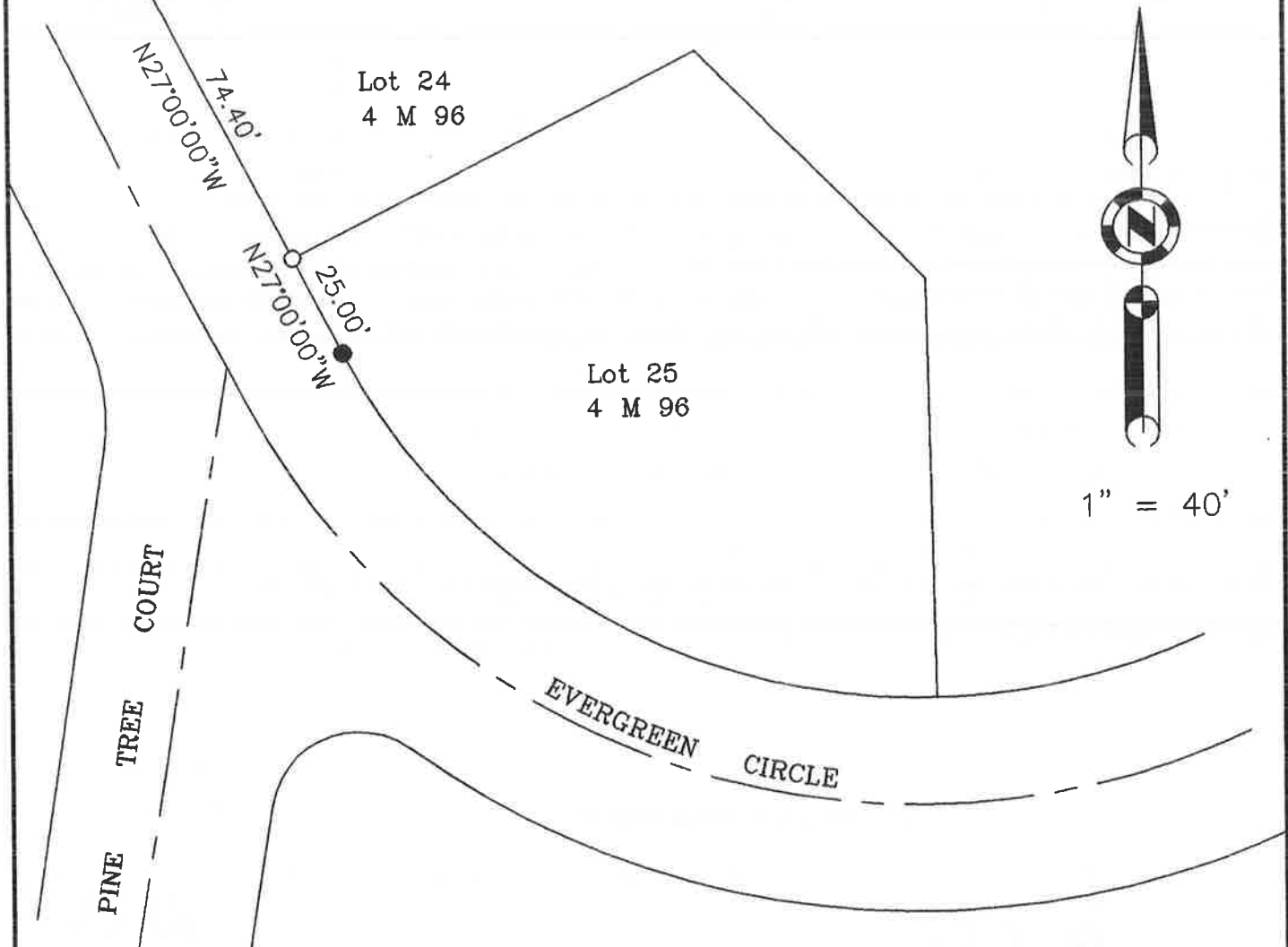
Signed R Tom Hunter Title County Surveyor



County Surveyor's Comment _____

LEGEND

- FOUND 1/2" Rebar per 4 M 96
- SET 5/8" Rebar with Aluminum Cap LS 5620



NOTE: All bearings and distances are record & measured per 4 M 96

Lot 25, Plumas-Eureka Estates
Unit No. 2
within the West 1/2 of the NE 1/4
of Section 8, T. 22 N., R. 12 E., M.D.M.

Hamby Surveying Inc.
P.O. Box 1209
Portola, CA 96122
(530) 832-5571

07066