

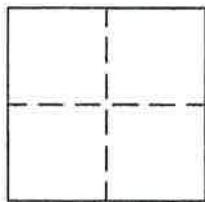
CORNER RECORD

Document Number 351

Section 36, T. 23 N., R. 13 E., M.D.M.

County of Plumas, California

Brief Legal Description South 1/2 Block 5, Eastern Addition to Portola R.M. Book A, Pg. 27



CORNER TYPE

COORDINATES (Optional)

Government Corner  Control   
Meander  Property   
Rancho  Other   
Date of Survey February 2, 2007

N. \_\_\_\_\_  
E. \_\_\_\_\_  
Zone \_\_\_\_\_ Datum \_\_\_\_\_  
Elev. \_\_\_\_\_

Corner- Left as found  Found and tagged  Established  Reestablished  Rebuilt

Identification and type of corner found: Evidence used to identify or procedure used to establish or reestablish the corner:  
Found corners in Block 4, 6 and 13 as shown on attached sketch from which I set Lot corners in Block 5 as shown on attached sketch.

A description of the physical condition of the monument as found and as set or reset: Lot corners set are 5/8" rebar with Aluminum Cap stamped LS 5620 as shown on attached sketch.

SURVEYOR'S STATEMENT

This Corner Record was prepared by me or under my direction in conformance with the Land Surveyors' Act on April 15, 2007

Signed John L. Owen L.S. 5620  
John L. Owen



5-31-07

COUNTY SURVEYOR'S STATEMENT

This Corner Record was received 6/01 2007 and examined and filed 6/25 2007.

Signed R Tom Hunter Title County Surveyor



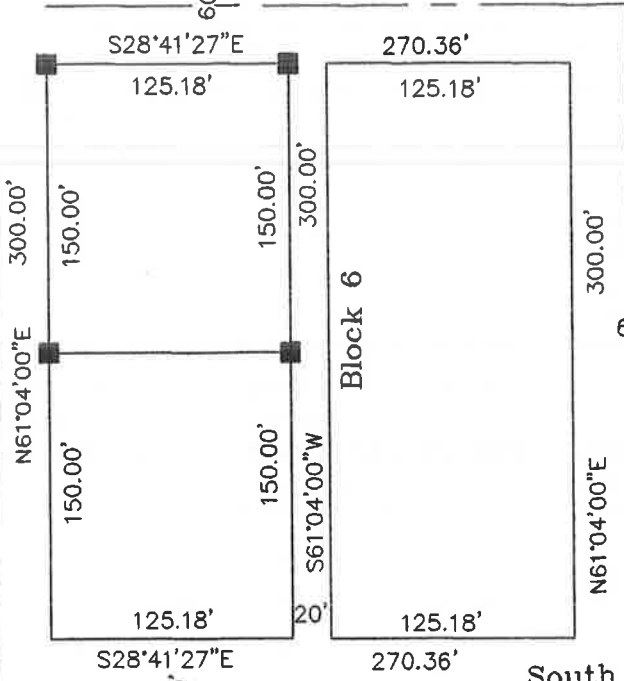
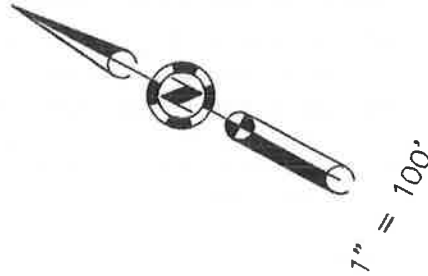
County Surveyor's Comment \_\_\_\_\_

South 5th Street

All bearings & distances shown for Blocks are record per 8 RS 9 & 10 RS 13

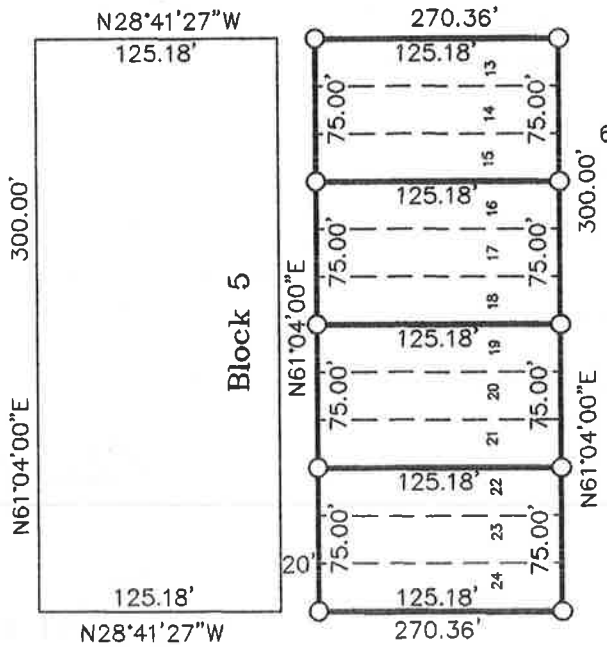
### Legend

- FOUND 5/8" rebar with Plastic Cap LS 2843 per 10 RS 13
  - FOUND point as shown
  - SET 5/8" rebar with Aluminum Cap LS 5620
- CR No. Corner Record



South 4th Street

Taylor Avenue

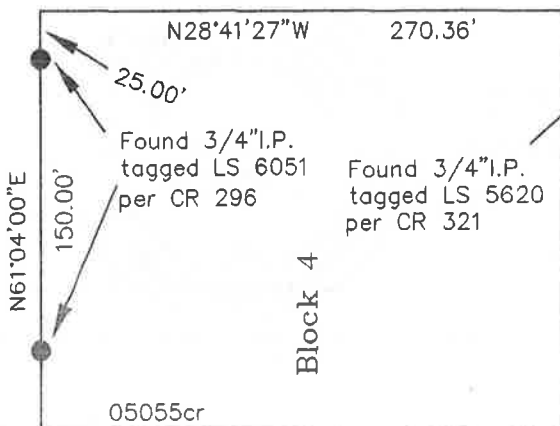


Portola Avenue

All bearings and distances are record and measured.

Block 12

South 3rd Street



Block 13

S 1/2 Block 5  
 Eastern Addition to Portola  
 Portion Section 36,  
 T. 23 N., R. 13 E., M.D.M.

Hamby Surveying Inc.  
 P.O. Box 1209  
 Portola, CA 96122  
 (530) 832-5571

05055cr