

S36 T23N R13E

County of Plumas, California

Brief Legal Description Block 11, Lots 18, 19 and 20 Northern Addition to Portola Townsite.

CORNER TYPE

Government Corner Control
 Meander Property
 Rancho Other
 Date of Survey June 19, 2007

COORDINATES (Optional)

N. _____
 E. _____
 Zone _____ Datum _____
 Elev. _____

Corner- Left as found Found and tagged Established Reestablished Rebuilt

Identification and type of corner found: Evidence used to identify or procedure used to establish or reestablish the corner:
Found monuments in good condition as established on 5 RS 17.

See attached sketch.

A description of the physical condition of the monument as found and as set or reset: _____

Found 1/2" Rebar with Aluminum Caps LS 2843.

Set 5/8" Rebar with Aluminum Caps at Lot corners as shown on attached sketch.

SURVEYOR'S STATEMENT

This Corner Record was prepared by me or under my direction in conformance with the Land Surveyors' Act in June, 2007.

Signed John L. Owen L.S. 5620
 John L. Owen



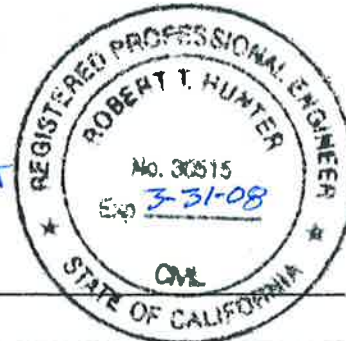
6-28-07

COUNTY SURVEYOR'S STATEMENT

This Corner Record was received July 11, 2007 and examined and filed July 19 2007.

Signed R Tom Hunter Title County Surveyor
RCE 30515
EX 3-31-08

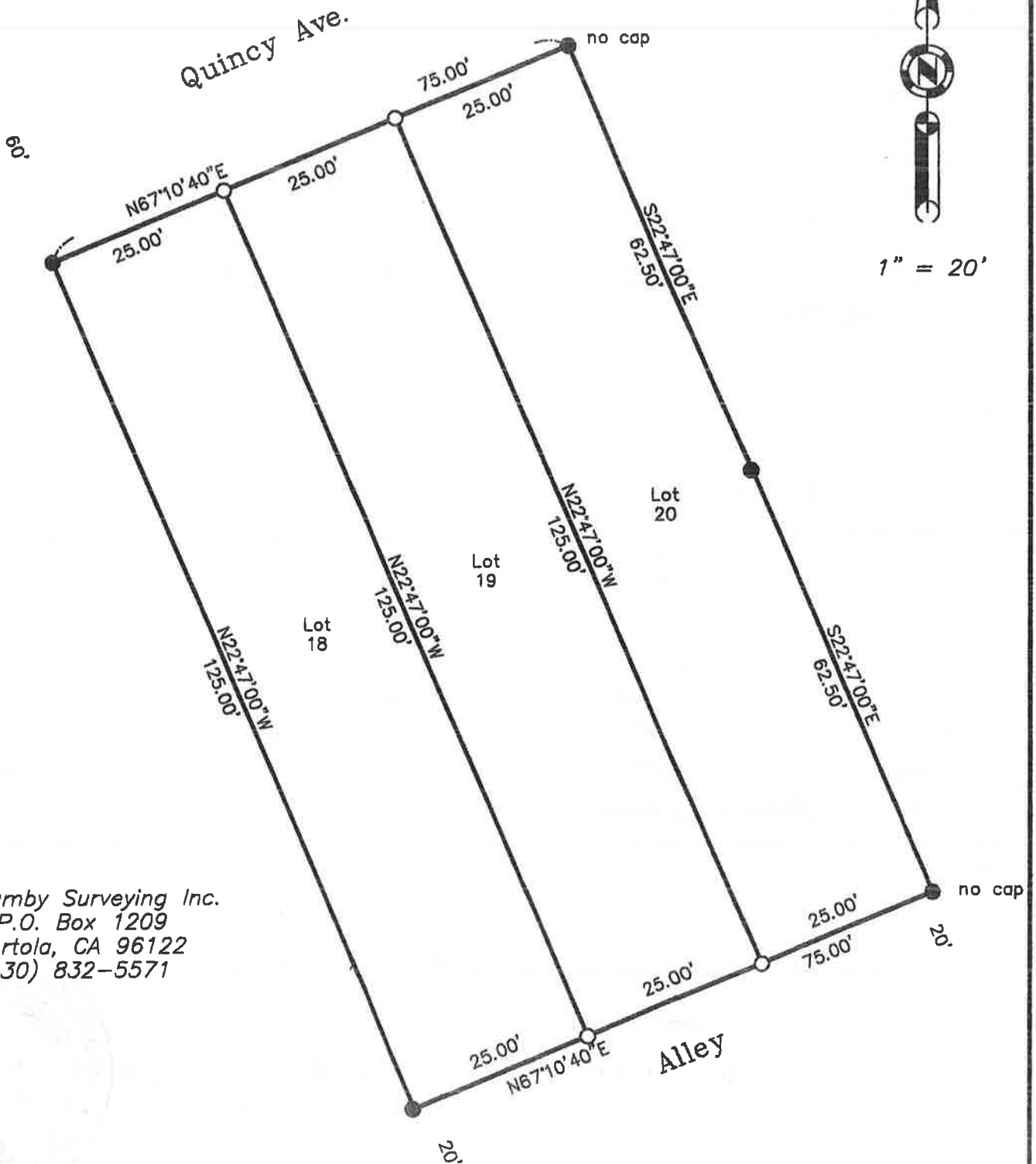
County Surveyor's Comment _____



All Bearings and Distances shown
are Record and Measured per 5 RS 17.



1" = 20'



Hamby Surveying Inc.
P.O. Box 1209
Portola, CA 96122
(530) 832-5571

- FOUND 1/2" Rebar with Aluminum Cap LS 2843 unless noted.
- SET 5/8" Rebar with Aluminum Cap LS 5620

07101