

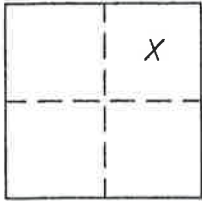
CORNER RECORD

Document Number 354

Portion Section 36, T.23N. R.13E. MDM

County of Plumas, California

Brief Legal Description Portion of Block 29, Northern Addition to Portola Townsite, 8 RS 141



CORNER TYPE

Government Corner Control
Meander Property
Rancho Other
Date of Survey May 10, 2007

COORDINATES
(Optional)

N. _____
E. _____
Zone _____ Datum _____
Elev. _____

Corner- Left as found Found and tagged Established Reestablished Rebuilt

Identification and type of corner found: Evidence used to identify or procedure used to establish or reestablish the corner:
Found points as shown on Corner Record # 255 in condition indicated on attached sketch.

A description of the physical condition of the monument as found and as set or reset:
Set 5/8" rebar with Aluminum caps stamped LS 5620 as indicated on attached sketch for property line common to Lots 10 and 11.

SURVEYOR'S STATEMENT

This Corner Record was prepared by me or under my direction in conformance with the Land Surveyors' Act in May, 2007.

Signed John L. Owen L.S. 5620
John L. Owen



COUNTY SURVEYOR'S STATEMENT

This Corner Record was received Aug. 1st 2007 and examined and filed Aug. 8th 2007.

Signed R Tom Hunter Title Plumas County Surveyor
RCE 30515



County Surveyor's Comment _____

- FOUND 5/8" Rebar with Plastic Cap LS 2843 per CR 255
- ⊗ FOUND 5/8" rebar (cap missing) CR 255
- SET 5/8" Rebar & Aluminum Cap LS 5620

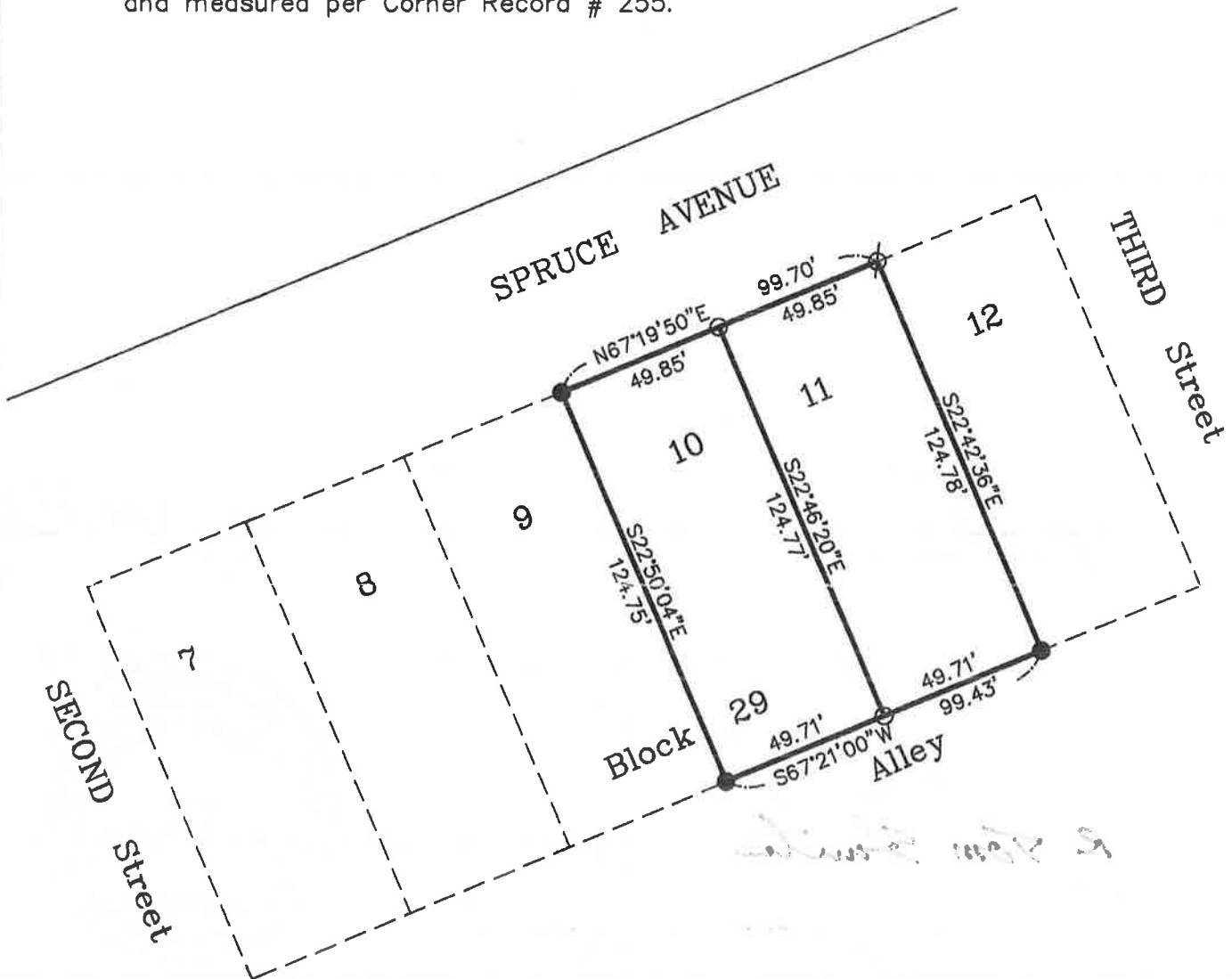


Portion Block 29 Northern Addition to Portola Townsite

Portola, Plumas County CA
Scale 1" = 50' May, 2007

1" = 50'

NOTE: Bearings and distances are record
and measured per Corner Record # 255.



Hamby Surveying Inc.
P.O. Box 1209
Portola, CA 96122
(530) 832-5571