

CORNER RECORD

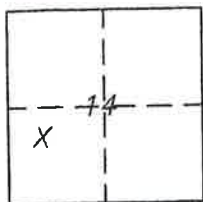
Document Number

355

Portion Section 14, T. 23 N., R. 11 E., M.D.M.

County of Plumas, California

Brief Legal Description Not a Part Existing parcel, 116 O.R. 204 per 11 PM 40



CORNER TYPE

Government Corner Control
Meander Property
Rancho Other
Date of Survey 9-24-2007

COORDINATES (Optional)

N. _____
E. _____
Zone _____ Datum _____
Elev. _____

Corner- Left as found Found and tagged Established Reestablished Rebuilt

Identification and type of corner found: Evidence used to identify or procedure used to establish or reestablish the corner:
Found corners per 11 PM 40 except that Not a Part Existing Parcel 116 OR 204 had Plastic Caps and not Aluminum Caps as shown on 11 PM 40 as shown on attached sketch.

A description of the physical condition of the monument as found and as set or reset: Most Westerly corner of "Not a Part Existing Parcel 116 OR 204" was missing, set corner as shown on attached sketch.

SURVEYOR'S STATEMENT

This Corner Record was prepared by me or under my direction in conformance with the Land Surveyors' Act on September 24, 2007.

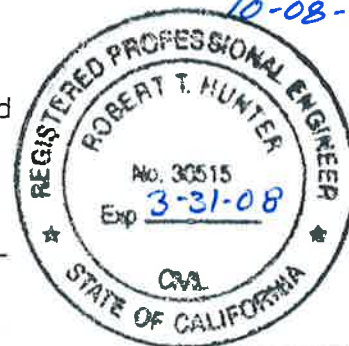
Signed John L. Owen L.S. 5620
John L. Owen



COUNTY SURVEYOR'S STATEMENT

This Corner Record was received Oct. 25th 2007 and examined and filed Oct. 30th 2007.

Signed R. Tom Hunter Title County Surveyor



10-08-07

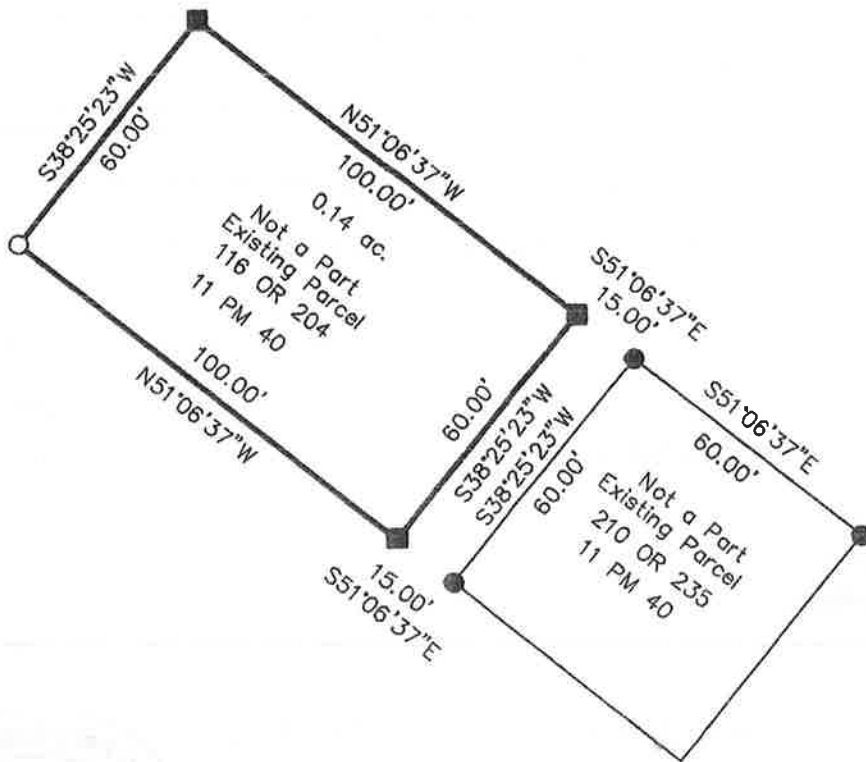
County Surveyor's Comment _____

NOTE:

All bearings and distances are record per 11 PM 40, corner set in record position as shown per 11 PM 40.



1" = 40'



LEGEND

- FOUND Plastic Cap LS 2843 not Aluminum Cap per 11 PM 40
- FOUND Rebar with Aluminum Cap LS 2843 per 11 PM 40
- Set 5/8" rebar with Aluminum Cap LS 5620