

CORNER RECORD

Document Number 358

Portion of Section 6, T.22N., R17E. MDM

County of Plumas, California

Brief Legal Description A Portion of Lot 2, Book 8 of Maps at Page 38

|  |   |
|--|---|
|  | X |
|  |   |

CORNER TYPE

Government Corner  Control   
 Meander  Property   
 Rancho  Other   
 Date of Survey July 26, 2007

COORDINATES (Optional)

N. \_\_\_\_\_  
 E. \_\_\_\_\_  
 Zone \_\_\_\_\_ Datum \_\_\_\_\_  
 Elev. \_\_\_\_\_

Corner- Left as found  Found and tagged  Established  Reestablished  Rebuilt

Identification and type of corner found: Evidence used to identify or procedure used to establish or reestablish the corner:  
Found points shown on attached sketch in condition indicated per 8 M 38.

A description of the physical condition of the monument as found and as set or reset: \_\_\_\_\_  
Set 5/8" Rebar with Aluminum caps stamped LS 5620 as indicated on attached sketch  
for angle points in road easement on Lot 2, 8 M 38.

SURVEYOR'S STATEMENT

This Corner Record was prepared by me or under my direction in conformance with the Land Surveyors' Act in July, 2007.

Signed John L. Owen L.S. 5620  
 John L. Owen

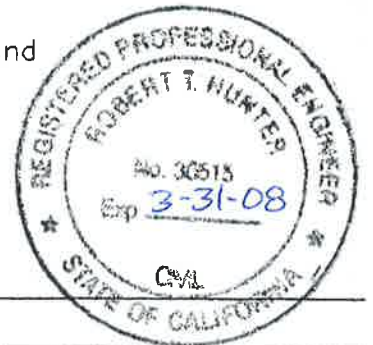


10-08-07

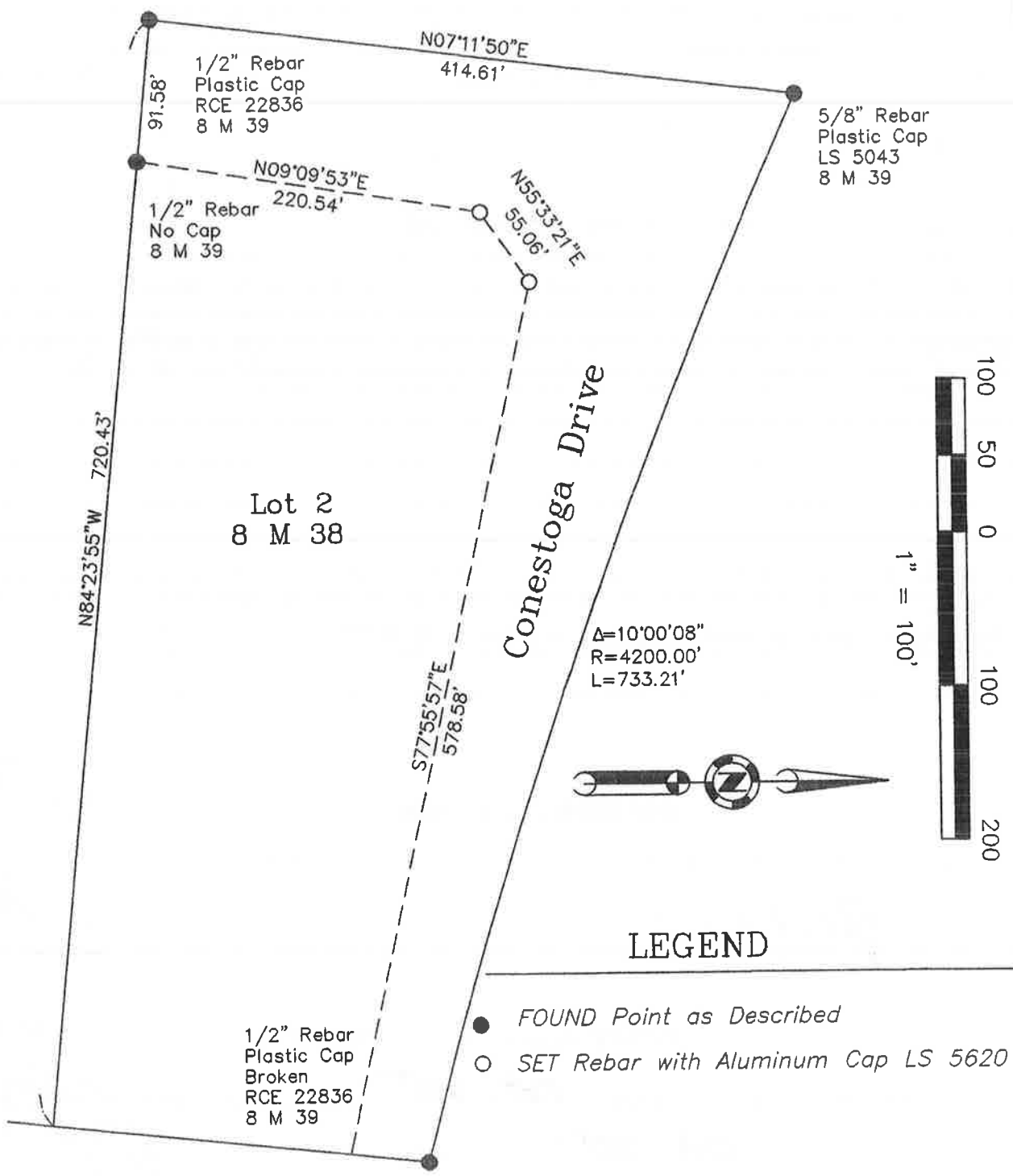
COUNTY SURVEYOR'S STATEMENT

This Corner Record was received Oct. 25<sup>th</sup> 2007 and  
 examined and filed Oct 30<sup>th</sup> 2007.

Signed R. Tom Hunter Title County Surveyor



County Surveyor's Comment \_\_\_\_\_



Bearings and Distances are Record and Measured per Book 8 of Maps at Page 38.

A Portion of Lot 2, 8 M 38  
 Situate in Section 6,  
 Township 22 North, Range 17 East, M.D.M.  
 Plumas County ~ California  
 Scale 1" = 100' August, 2007

Hamby Surveying Inc.  
 P.O. Box 1209  
 Portola, CA 96122  
 (530) 832-5571