

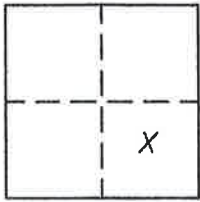
CORNER RECORD

Document Number 359

Section 34, T. 23 N., R. 13 E., M.D.M.

County of Plumas, California

Brief Legal Description Lot 8, 6 RS 112, Grizzly Lake Resort Improvement District



CORNER TYPE

Government Corner Control
Meander Property
Rancho Other
Date of Survey October, 23, 2007

COORDINATES (Optional)

N. _____
E. _____
Zone _____ Datum _____
Elev. _____

Corner- Left as found Found and tagged Established Reestablished Rebuilt

Identification and type of corner found: Evidence used to identify or procedure used to establish or reestablish the corner:
Southeast corner of Lot 8 missing used Northeast corner and Southwest corner of Lot 8 to set Southeast corner of Lot 8 in record position as shown on attached sketch.

A description of the physical condition of the monument as found and as set or reset: Set 5/8" rebar with Aluminum cap stamped LS 5620 as shown on attached sketch.

SURVEYOR'S STATEMENT

This Corner Record was prepared by me or under my direction in conformance with the Land Surveyors' Act on October 26, 2007.

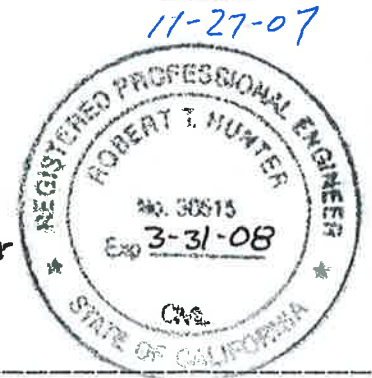
Signed John L. Owen L.S. 5620
John L. Owen



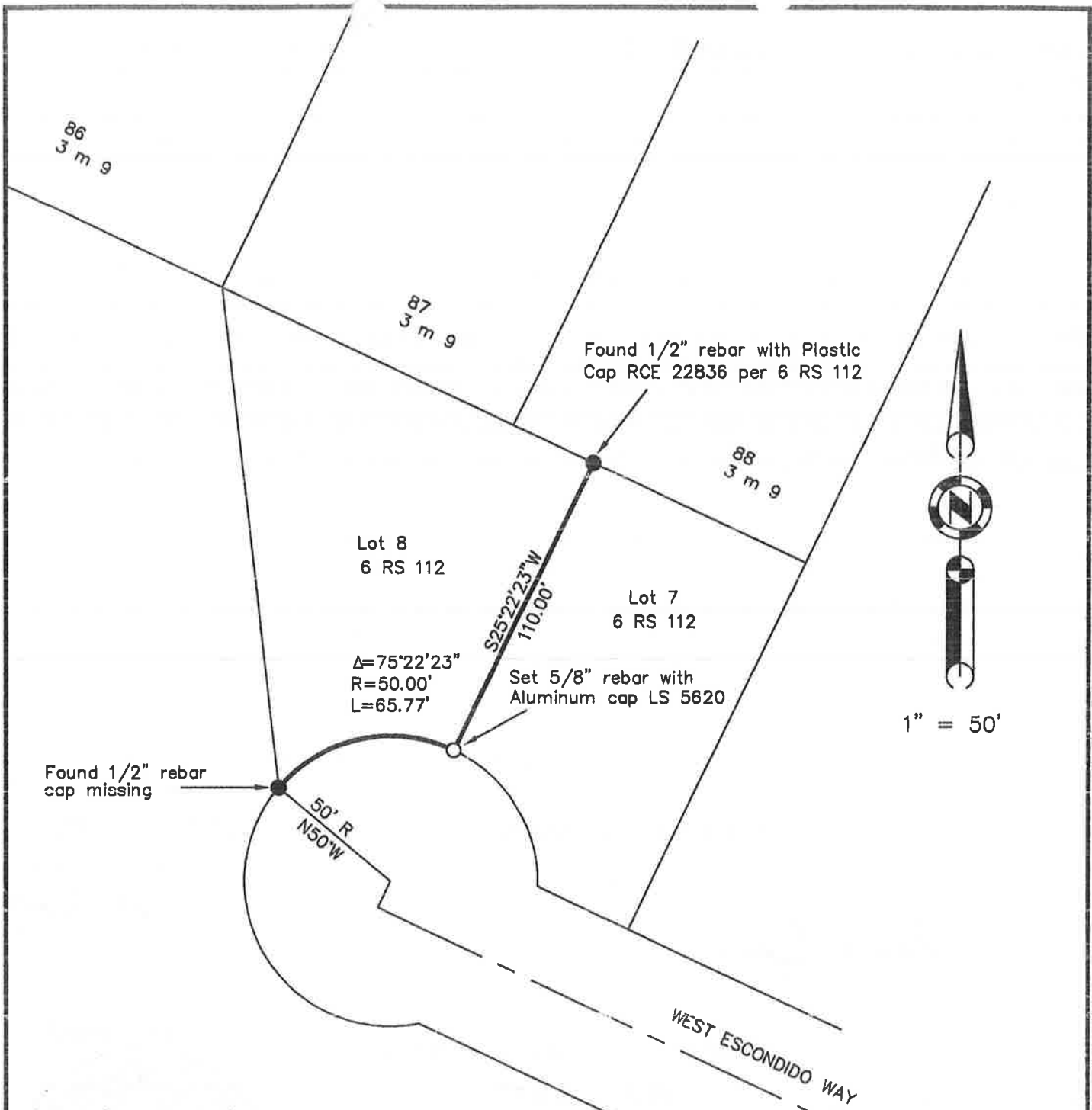
COUNTY SURVEYOR'S STATEMENT

This Corner Record was received Oct. 26th 2007 and examined and filed Dec. 12th 2007.

Signed R. Tom Hunter Title County Surveyor
RCE 30515



County Surveyor's Comment _____



1" = 50'

NOTE: All bearings, distances and curve data are record per 6 RS 112

Lot 8, 6 RS 112
 Grizzly Lake Resort
 Improvement District

Hamby Surveying Inc.
 P.O. Box 1209
 Portola, CA 96122
 (530) 832-5571