

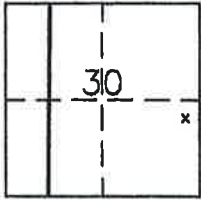
CORNER RECORD

Document Number 361

S 1/2 Section 30, T. 23 N., R. 14 E., M.D.M.

County of Plumas, California

Brief Legal Description: Corner common to Lots 22 & 23, Parkside Terrace, Unit No. One recorded in Book 2 of Maps at page 31, Plumas County



CORNER TYPE

Government Corner  Control   
Meander  Property   
Rancho  Other   
Date of Survey 12-13-2007

COORDINATES (Optional)

N. \_\_\_\_\_  
E. \_\_\_\_\_  
Zone \_\_\_\_\_ Datum \_\_\_\_\_  
Elev. \_\_\_\_\_

Corner-- Left as found  Found and tagged  Established  Reestablished  Rebuilt

Identification and type of corner found: Evidence used to identify or procedure used to establish or reestablish the corner: Found Bolts with 1" square heads for Northwest corner of Lot 24, corner common to Lots 21 & 22 and Northwest corner of Lot 21 as shown on attached sketch.

A description of the physical condition of the monument as found and as set or reset: Set 5/8" rebar with Aluminum Cap LS 5620 for corner common to Lots 22 & 23 in record position as shown on attached sketch.

SURVEYOR'S STATEMENT

This Corner Record was prepared by me or under my direction in conformance with the Land Surveyors' Act on December 17, 2007.

Signed \_\_\_\_\_ L.S. 5620  
John L. Owen



12-26-07

COUNTY SURVEYOR'S STATEMENT

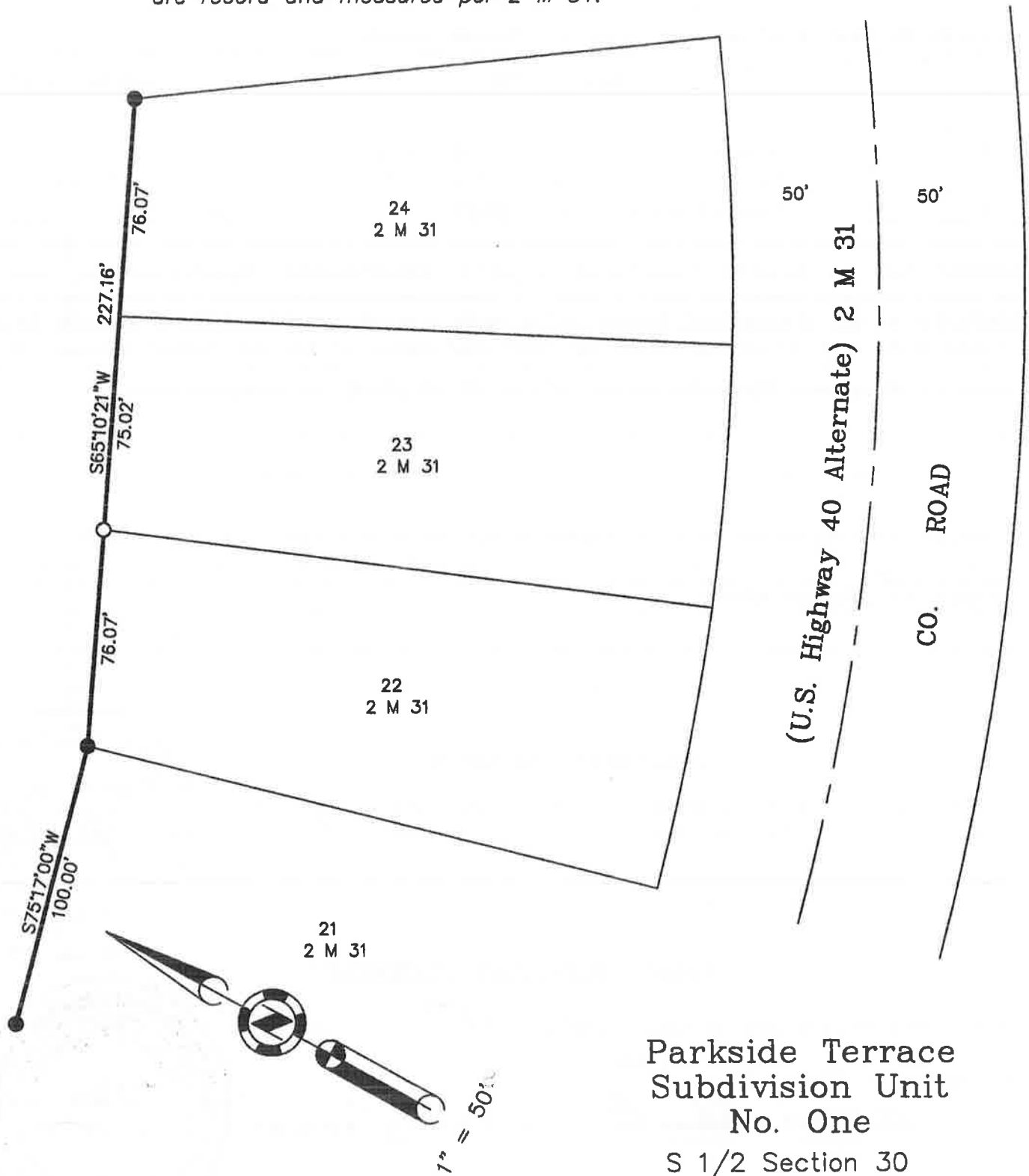
This Corner Record was received Dec. 13<sup>th</sup> 2007 and examined and filed Jan 4<sup>th</sup> 2008.

Signed R Tom Hunter Title County Surveyor



County Surveyor's Comment \_\_\_\_\_

NOTE: All bearings and distance shown are record and measured per 2 M 31.



50' 50'  
 (U.S. Highway 40 Alternate) 2 M 31  
 CO. ROAD

- Found Bolt with 1" square head per 2 M 31.
- SET 5/8" rebar with Aluminum Cap LS 5620

**Parkside Terrace  
 Subdivision Unit  
 No. One**

S 1/2 Section 30  
 T. 23 N., R. 14 E., M.D.M.  
 Scale 1"=50' December 2007

*Hamby Surveying Inc.*  
 P.O. Box 1209  
 Portola, CA 96122  
 (530) 832-5571