

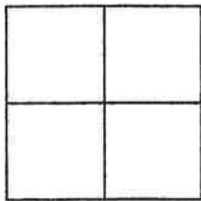
CORNER RECORD

Document Number 362

Section 21, T 23N, R14E

County of Plumas, California

Brief Legal Description Parcel 2 and 3, 6 PM 116



CORNER TYPE

Government Corner  Control   
Meander  Property   
Rancho  Other   
Date of Survey December 3, 2007

COORDINATES (Optional)

N. \_\_\_\_\_  
E. \_\_\_\_\_  
Zone \_\_\_\_\_ Datum \_\_\_\_\_  
Elev. \_\_\_\_\_

Corner- Left as found  Found and tagged  Established  Reestablished  Rebuilt

Identification and type of corner found: Evidence used to identify or procedure used to establish or reestablish the corner:  
Found points shown on attached sketch in condition as indicated per 6 PM 116.

A description of the physical condition of the monument as found and as set or reset: \_\_\_\_\_  
Set 5/8" Rebar with Aluminum Cap LS 5620 in record position shown on attached sketch per 6 PM 116.

SURVEYOR'S STATEMENT

This Corner Record was prepared by me or under my direction in conformance with the Land Surveyors' Act on December 18, 2007.

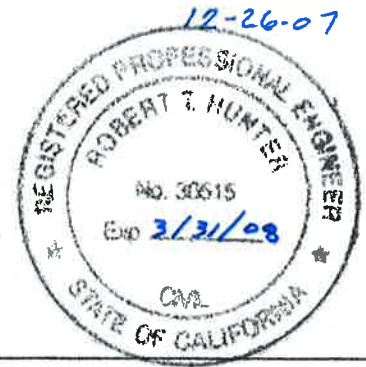
Signed John L. Owen L.S. 5620  
John L. Owen



COUNTY SURVEYOR'S STATEMENT

This Corner Record was received Dec. 13<sup>th</sup> 2007 and examined and filed Jan. 4<sup>th</sup> 2008.

Signed R. Tom Hunter Title County Surveyor



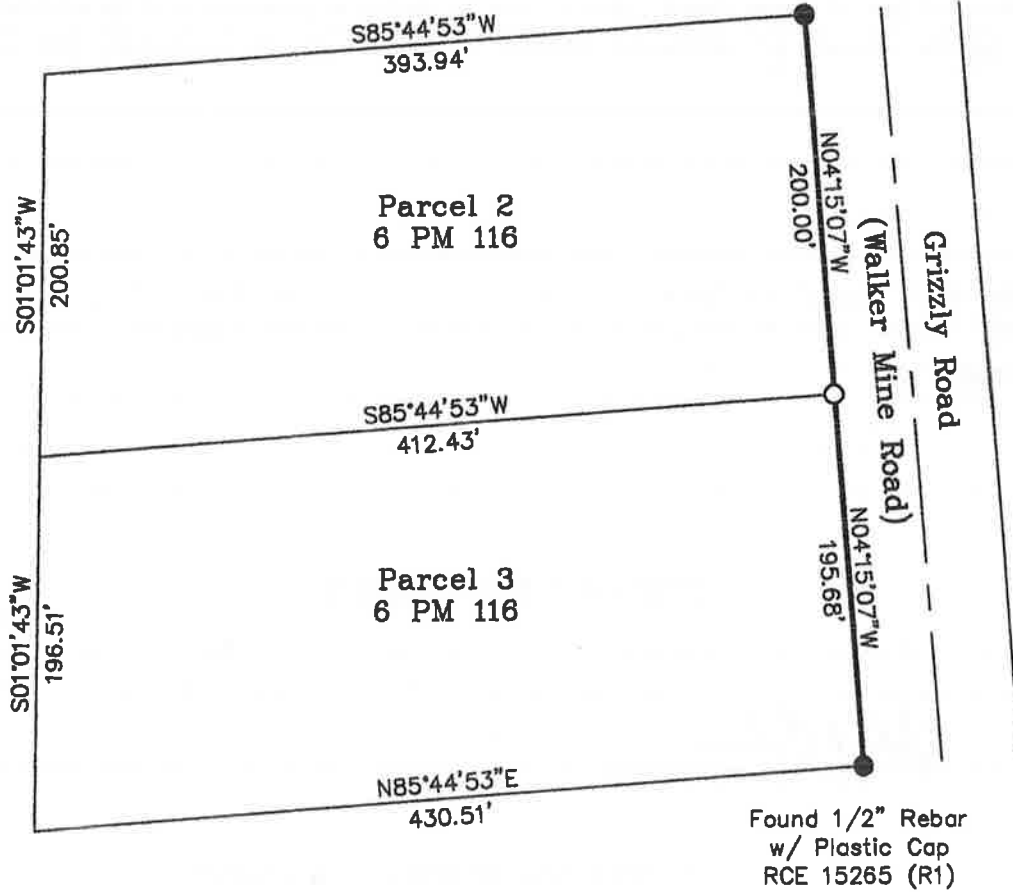
County Surveyor's Comment \_\_\_\_\_



Bearings and Distances are Record  
and Measured per Book 6 PM 116.

1" = 100'

Found 1/2" Rebar  
w/ Plastic Cap  
RCE 15265 (R1)



Easterly line of Parcels 2 & 3  
Book 6 Parcel Maps at Page 116  
Situate in Section 21  
Township 23 North, Range 14 East, M.D.M.  
Plumas County ~ California  
Scale 1" = 100' December, 2007

Hamby Surveying Inc.  
P.O. Box 1209  
Portola, CA 96122  
(530) 832-5571