

CORNER RECORD

Document Number 3165
 County of Plumas, California

City of n/a

Brief Legal Description SE cor. of Bald Mountain Claim, MS 2529, sec. 3, T21N, R9E, MDM, CA

CORNER TYPE		COORDINATES(Optional)	
<input type="checkbox"/>	Government Corner	<input checked="" type="checkbox"/>	Control
<input type="checkbox"/>	Meander	<input type="checkbox"/>	Property
<input type="checkbox"/>	Rancho	<input type="checkbox"/>	Other
Date of Survey <u>6/23/07</u>		N. <u>n/a</u>	E. <u>n/a</u>
		Zone <u>n/a</u>	NAD27 <input type="checkbox"/> NAD83 <input type="checkbox"/>
		NAD83 Epoch <u>n/a</u>	Elev. <u>n/a</u>
		Vert. Datum: NGVD29 <input type="checkbox"/> NADV88 <input type="checkbox"/>	Meas. Units: Metric <input type="checkbox"/> Imperial <input checked="" type="checkbox"/>

Note: This is a refurbishment of posted / marked boundary and corner.

Corner - Left as found Found and tagged Established Reestablished Rebuilt

Identification and type of corner found: Evidence used to identify or procedure used to establish or reestablish the corner:

Original corner set by Wm. Schuld, under Mineral Survey 2529, approved March 4, 1887.
 This corner was remonumented by A.H. Devoe, LS 3079, during survey recorded December 6, 1965, in Plumas County 3-RS-52.
 This corner was recovered and desc. in 1968, by Plumas County 3-M-90.
 From which the remains of original bearing trees
 Remains of a decomposing white fir stump, bears N. 68¼° E., 24.8 ft. dist.,
 A pine snag, 36 ins. diam., bears S. 77¾° W., 14.2 ft. dist.
 Recovered Devoe bearing tree
 A white fir, 26 ins. diam. alive and healthy, bears N. 69° W., 33.0 ft. dist., with healed blaze.

A description of the physical condition of the monument as found and as set or reset:

Found a 2½ ins. diam. brass cap on 2½ ins. diam. galv. iron post. firmly set in good condition, projecting 24 ins. above ground, in rock mound 2 ft base, 1 ft. high, mkd. (see attached sketch).
 New bearing trees;
 A cedar, 15 ins. diam., bears S. 62½° E., 27.5 ft. dist., mkd. X BT.

SURVEYOR'S STATEMENT

This Corner Record was prepared by me or under my direction in conformance with

the Land Surveyors Act on September 23, 2007

Signed: Ron C. Walter 2-11-08 NEGLECTED TO SIGN WITH PAGE 2 ON 12-22-07 L.S. No. 6501



COUNTY SURVEYOR'S STATEMENT

This Corner Record was received Jan. 3rd, 2008 and examined

and filed Feb. 22nd, 2008

Signed: R. Tom Hunter P.L.S. or R.C.E. No.: RCE 30515

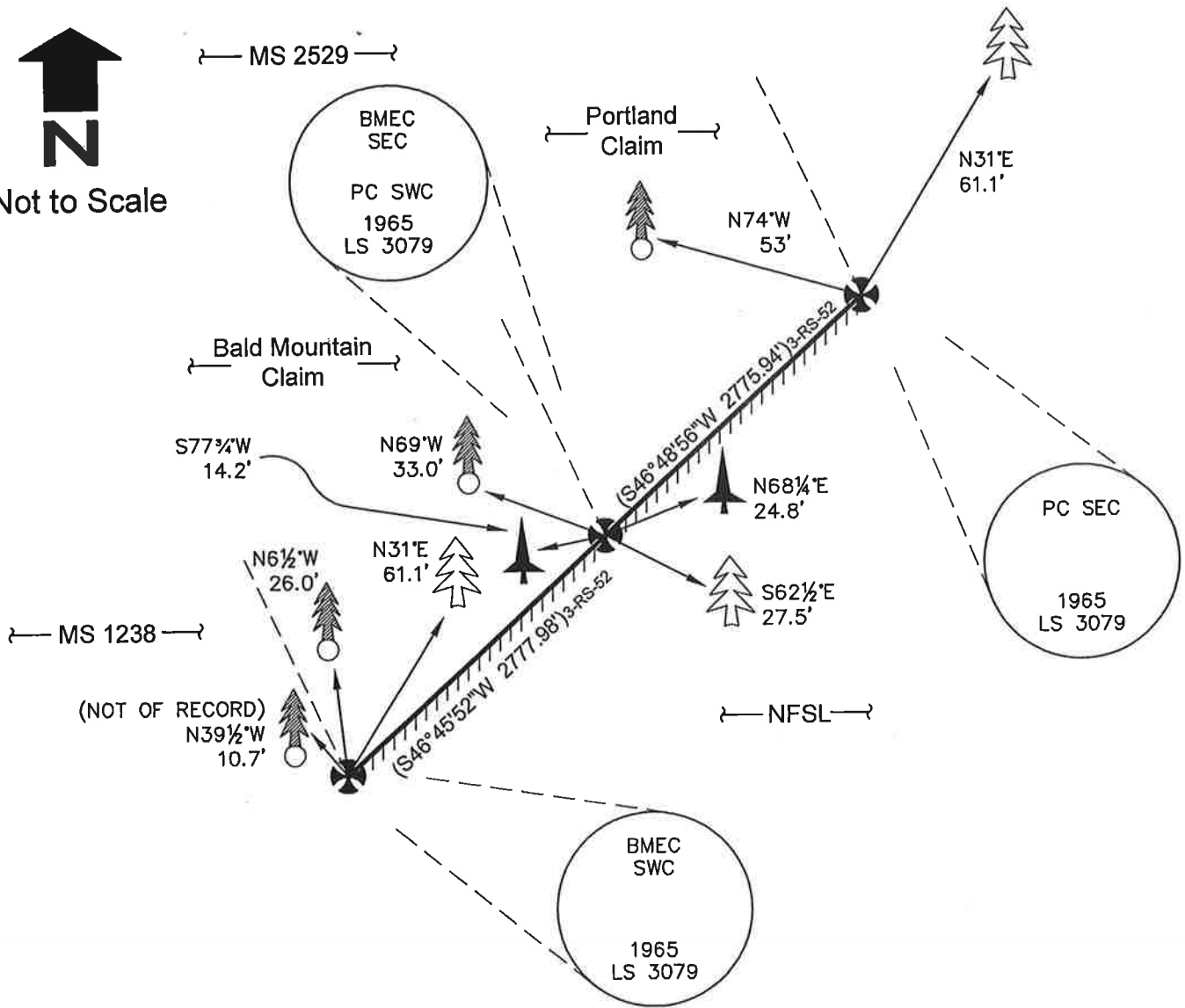
Title County Surveyor

County Surveyors Comment _____










Not to Scale



(MS 2529 / 3-RS-52)

LEGEND

-  Found remonumentation of original Mineral Survey corner described in the official record.
-  Recovered original bearing tree or remains.
-  Recovered Devoe (LS 3079) bearing tree or remains.
-  New bearing tree - established this survey.
- () Record informational calls from 3-RS-52.
-  Survey line Posted - USFS signs (///// NFSL side) and Blazed (NF side only on southern 2778 ft.).

MS 2529, Secs. 3 & 10 T21N, R9E, MDM, CA

Wallowa Associates - Ron Walter, LS
Not to Scale / September, 2007

NOTE

1. The Basis of Bearing on 3-RS-52 (shown hereon) was derived by solar observation.



RW 12-22-07