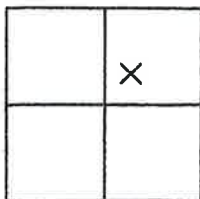


CORNER RECORD

Document Number 3664

A portion of Section 16, T. 23 N., R. 14 E. County of Plumas, California

Brief Legal Description Lot 22, Grizzly Ranch Unit 1, 9 M 92



CORNER TYPE

Government Corner  Control   
Meander  Property   
Rancho  Other   
Date of Survey November 8, 2007

COORDINATES (Optional)

N. \_\_\_\_\_  
E. \_\_\_\_\_  
Zone \_\_\_\_\_ Datum \_\_\_\_\_  
Elev. \_\_\_\_\_

Corner- Left as found  Found and tagged  Established  Reestablished  Rebuilt

Identification and type of corner found: Evidence used to identify or procedure used to establish or reestablish the corner:  
Found points shown on attached sketch in condition shown per 9 M 92.

A description of the physical condition of the monument as found and as set or reset: \_\_\_\_\_  
Set 5/8" Rebar with Aluminum Cap LS 5620 in record position shown on attached sketch.

SURVEYOR'S STATEMENT

This Corner Record was prepared by me or under my direction in conformance with the Land Surveyors' Act on November 9, 2007.

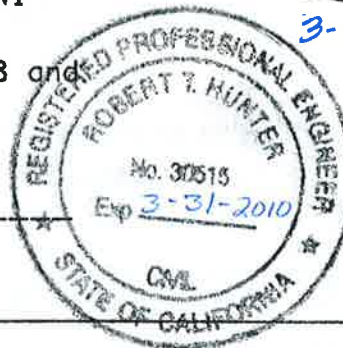
Signed John L. Owen L.S. 5620  
John L. Owen



COUNTY SURVEYOR'S STATEMENT

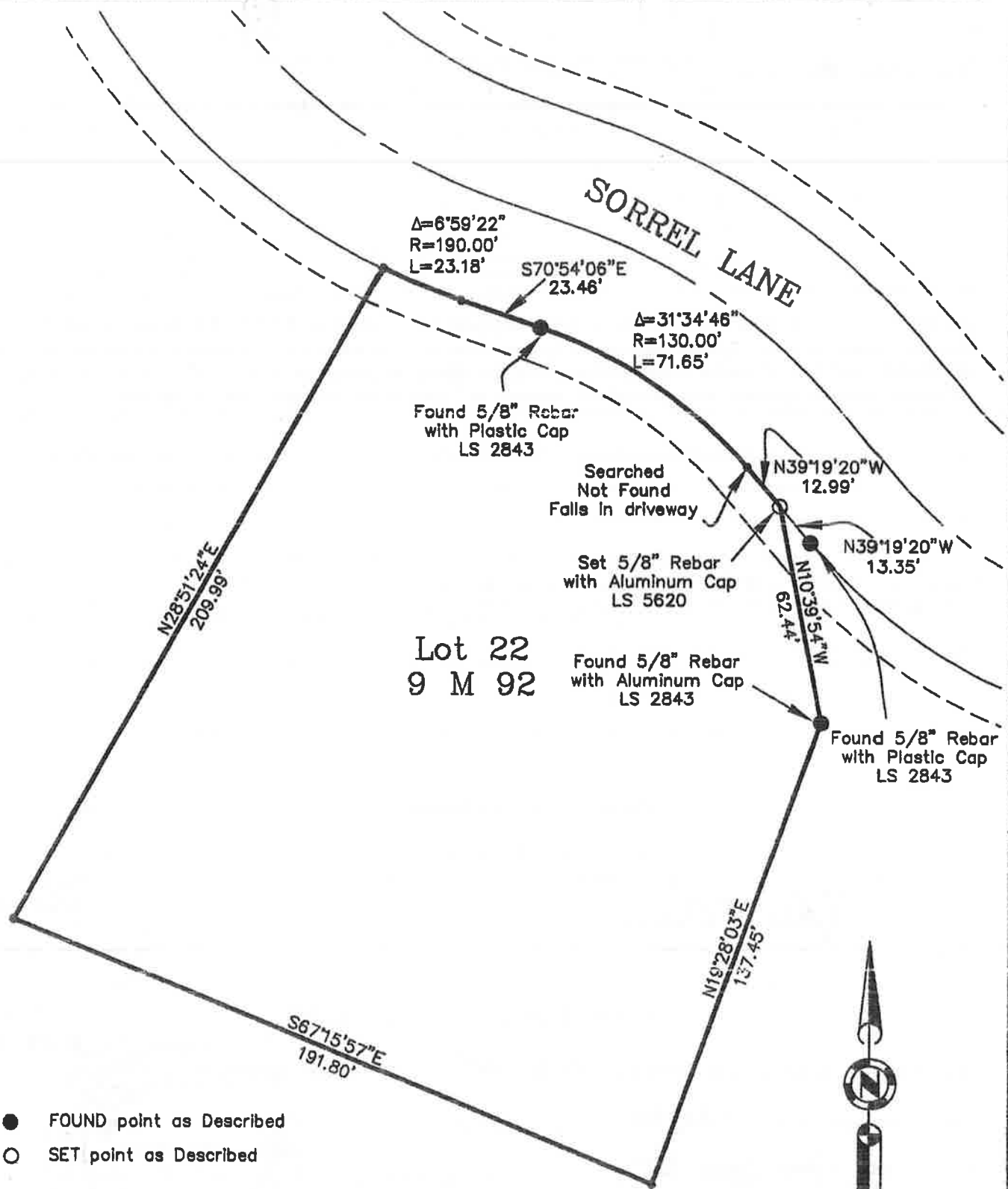
This Corner Record was received Feb 19<sup>th</sup> 2008 and examined and filed 3/10/08 2008.

Signed R Tom Hunter Title County Surveyor



3-05-08

County Surveyor's Comment \_\_\_\_\_



Lot 22  
9 M 92

- FOUND point as Described
- SET point as Described

Bearings and Distances shown hereon  
are Record and Measured per 9 M 92.



1" = 40'