

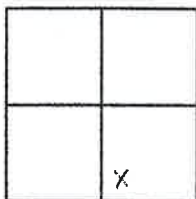
CORNER RECORD

Document Number 367

City of Portola

County of Plumas, California

Brief Legal Description Lot 17 & 18, Block 6, Portola Townsite - S.36, T.23N. R.13E.



CORNER TYPE

COORDINATES (Optional)

Government Corner Control
Meander Property
Rancho Other
Date of Survey _____

N. _____
E. _____
Zone _____ Datum _____
Elev. _____

Corner- Left as found Found and tagged Established Reestablished Rebuilt

Identification and type of corner found: Evidence used to identify or procedure used to establish or reestablish the corner:
Found points shown on attached sketch in good condition per 13 RS 101.

A description of the physical condition of the monument as found and as set or reset:
Set 5/8" Rebar with Aluminum Cap LS 5620 in locations shown on attached sketch.

SURVEYOR'S STATEMENT

This Corner Record was prepared by me or under my direction in conformance with the Land Surveyors' Act on February 13, 2008.

Signed John L. Owen L.S. 5620
John L. Owen



COUNTY SURVEYOR'S STATEMENT

This Corner Record was received April 3rd 2008 and examined and filed April 11th 2008.

Signed R. Tom Hunter Title County Surveyor

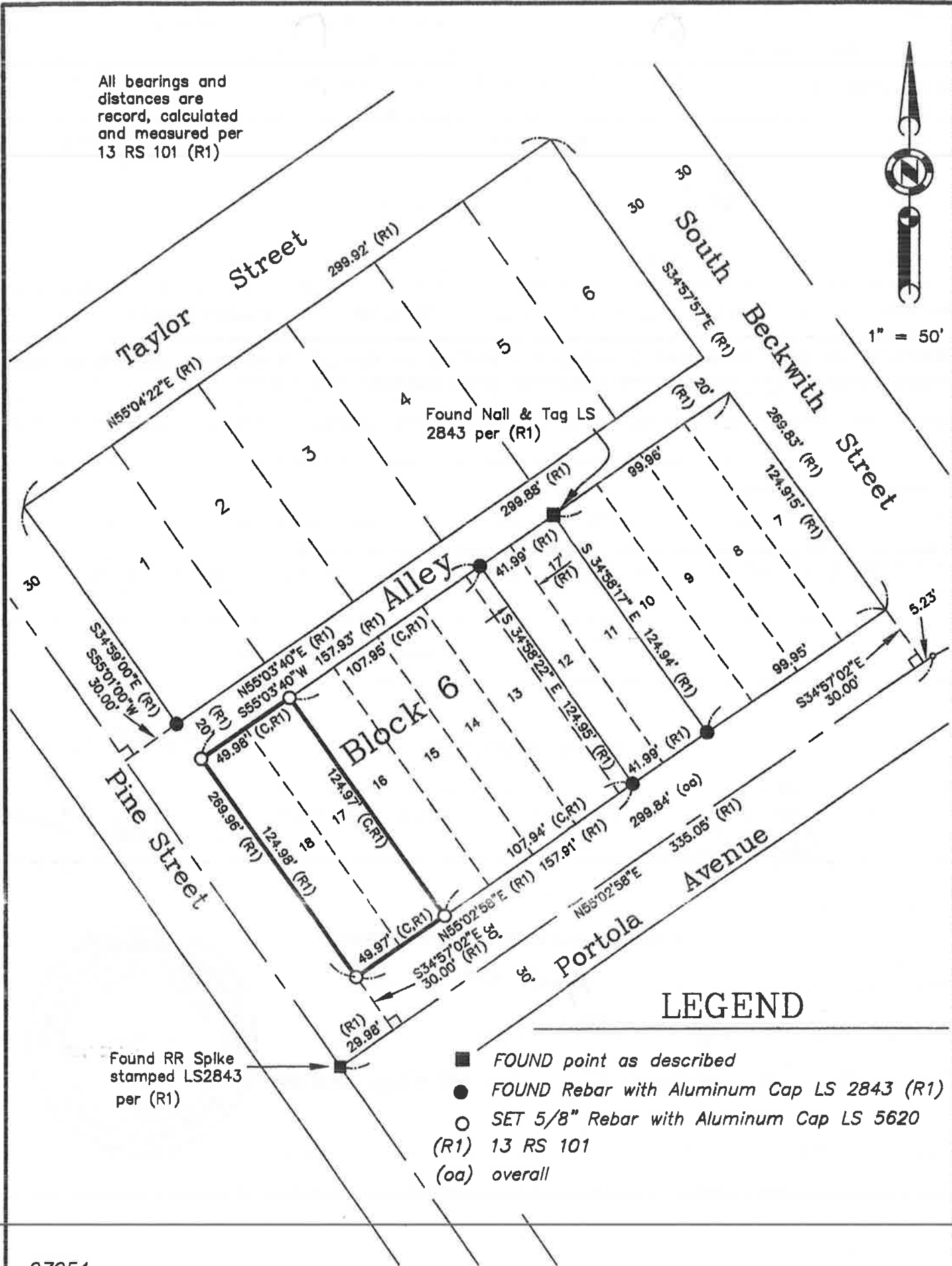


County Surveyor's Comment _____

All bearings and distances are record, calculated and measured per 13 RS 101 (R1)



1" = 50'



LEGEND

- FOUND point as described
- FOUND Rebar with Aluminum Cap LS 2843 (R1)
- SET 5/8" Rebar with Aluminum Cap LS 5620
- (R1) 13 RS 101
- (oa) overall

07054