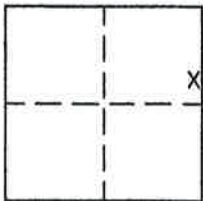


CORNER RECORD

Document Number 368

Portion of Section 36, T.23 N., R. 13 E., M.D.M. City of Portola, County of Plumas, California

Brief Legal Description Most Easterly corner of Parcel 1, 9 PM 51



CORNER TYPE

Government Corner Control
Meander Property
Rancho Other
Date of Survey March 20, 2008

COORDINATES (Optional)

N. _____
E. _____
Zone _____ Datum _____
Elev. _____

Corner- Left as found Found and tagged Established Reestablished Rebuilt

Identification and type of corner found: Evidence used to identify or procedure used to establish or reestablish the corner:
Found 1" bolts on Northerly side of Meadow Way shown in 9 PM 51 from which I set the most Easterly corner of Parcel 1 as shown on attached sketch.

A description of the physical condition of the monument as found and as set or reset: Set 5/8" rebar with Aluminum Cap stamped LS 5620 at most Easterly corner of Parcel 1 in record position as shown on attached sketch.

SURVEYOR'S STATEMENT

This Corner Record was prepared by me or under my direction in conformance with the Land Surveyors' Act on March 20, 2008

Signed John L. Owen L.S. 5620
John L. Owen



COUNTY SURVEYOR'S STATEMENT

This Corner Record was received March 24, 2008 and examined and filed April 28th 2008.

Signed R. Tom Spitzer Title County Surveyor

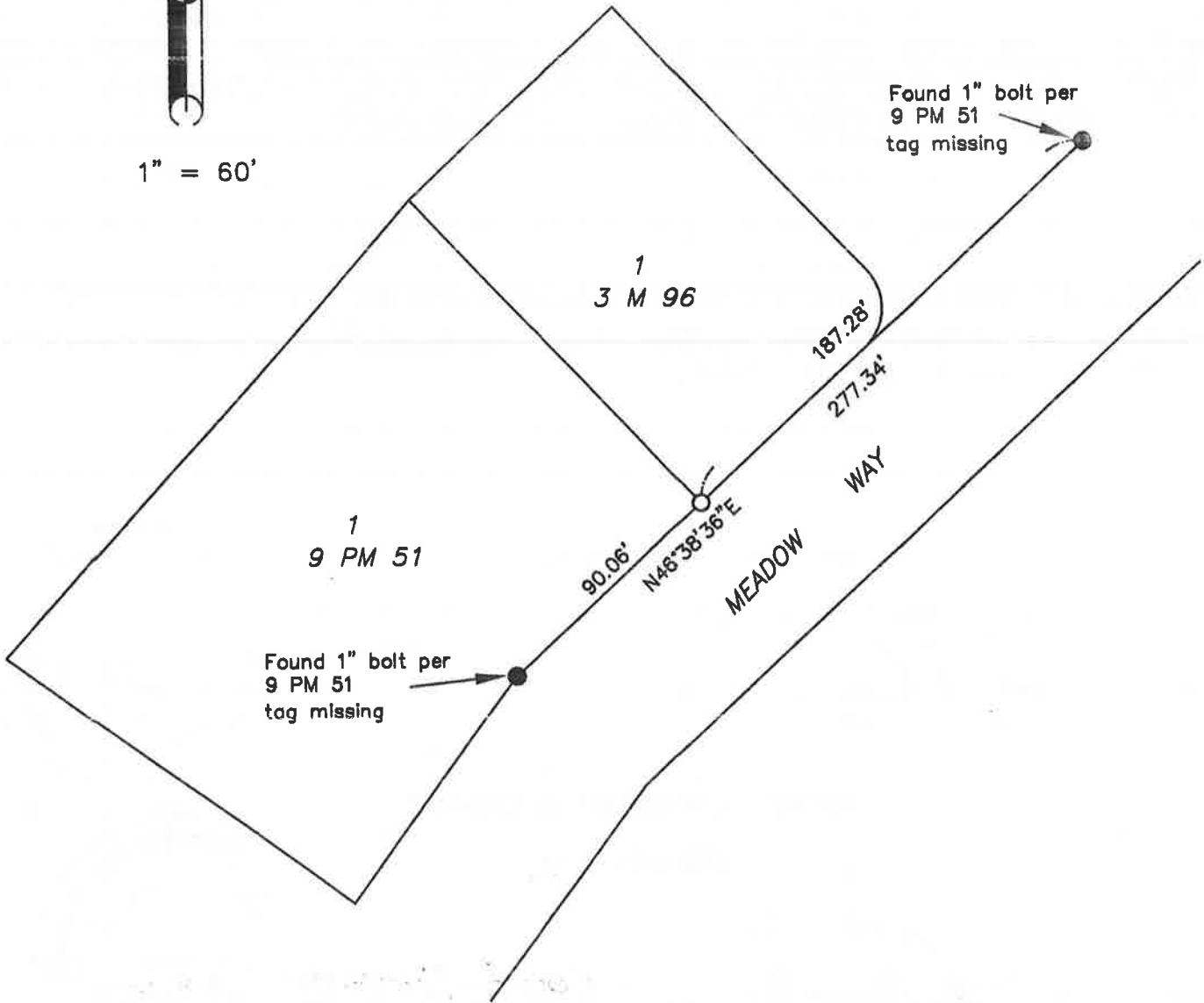


County Surveyor's Comment _____

Note: Bearings and distances shown are record per 9 PM 51



1" = 60'



LEGEND

- FOUND point as shown
- SET 5/8" rebar with Aluminum Cap LS 5620