

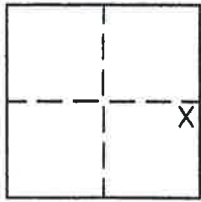
CORNER RECORD

Document Number 369

Portion Section 34, T. 23 N., R. 13 E., M.D.M.

County of Plumas, California

Brief Legal Description Lots 22, 23 & 24, 3 M 7, Delleker Subdivision, Unit 2



CORNER TYPE

COORDINATES (Optional)

Government Corner Control
Meander Property
Rancho Other
Date of Survey _____

N. _____
E. _____
Datum _____
Elev. _____

Corner— Left as found Found and tagged Established Reestablished Rebuilt

Identification and type of corner found: Evidence used to identify or procedure used to establish or reestablish the corner:
Found 1/2" I.P. with weathered or missing plastic caps as shown on attached sketch.

A description of the physical condition of the monument as found and as set or reset: Set 5/8" rebar with Aluminum Cap stamped LS 5620 as shown on attached sketch.

SURVEYOR'S STATEMENT

This Corner Record was prepared by me or under my direction in conformance with the Land Surveyors' Act on March 26, 2008.

Signed John L. Owen L.S. 5620
John L. Owen



COUNTY SURVEYOR'S STATEMENT

This Corner Record was received 6/12 2008 and examined and filed July 16, 2008.

Signed R Tom Spurter Title County Surveyor

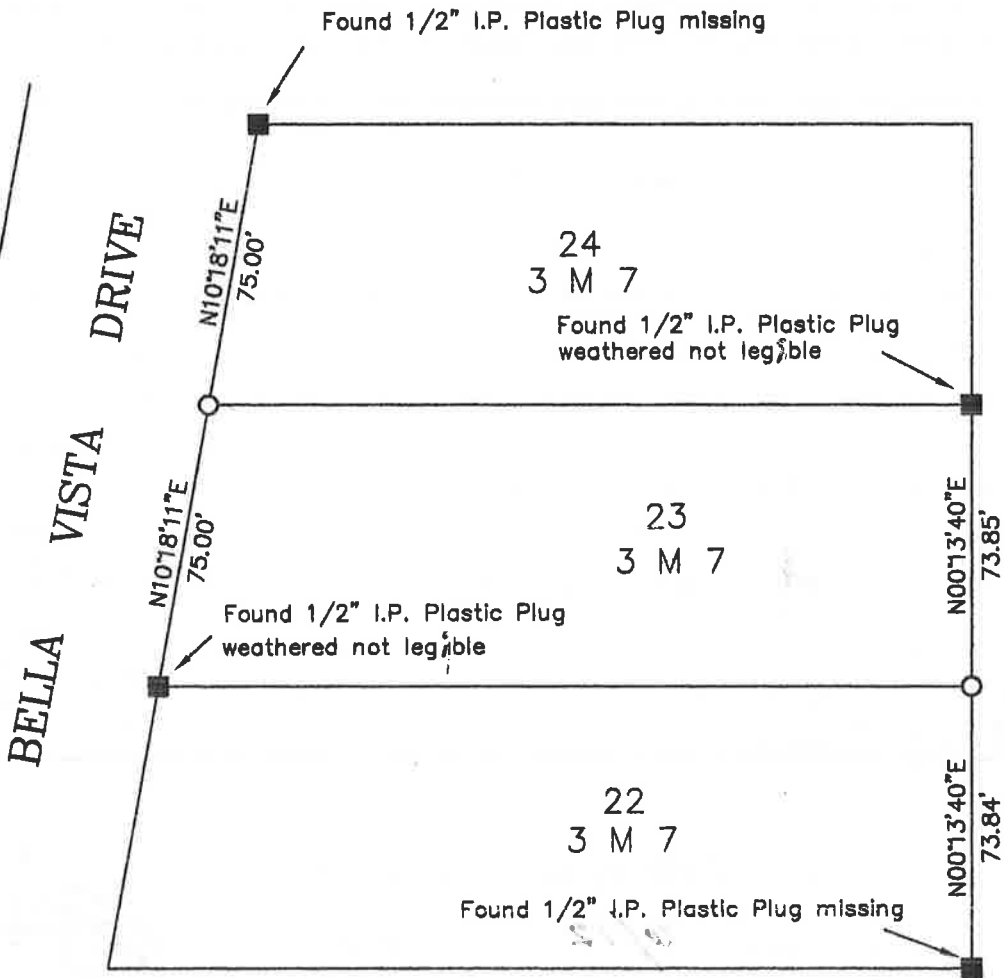


County Surveyor's Comment _____

measured NOTE: All bearings and distance shown are and record per 3 M 7, Delleker Subdivision Unit NO. 2.



1" = 50'



LEGEND

- FOUND point as described
- SET 5/8" rebar with Aluminum Cap LS 5620