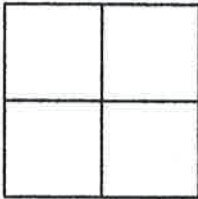


CORNER RECORD

Document Number 370

County of Plumas, California

Brief Legal Description Lot 6, 7 M 145, Section 8, T.22N., R.12E.,



CORNER TYPE

Government Corner Control
Meander Property
Rancho Other
Date of Survey July 2, 2008

COORDINATES (Optional)

N. _____
E. _____
Zone _____ Datum _____
Elev. _____

Corner- Left as found Found and tagged Established Reestablished Rebuilt

Identification and type of corner found: Evidence used to identify or procedure used to establish or reestablish the corner:
Found 5/8" rebar with Aluminum Cap LS 2843, in good condition, at locations shown on attached sketch per 7 M 145.

A description of the physical condition of the monument as found and as set or reset: _____
Set 5/8" rebar with Aluminum Cap LS 5620 in record position as shown on attached sketch.

SURVEYOR'S STATEMENT

This Corner Record was prepared by me or under my direction in conformance with the Land Surveyors' Act on July 2, 2008.

Signed John W. Owen L.S. 5620



COUNTY SURVEYOR'S STATEMENT

This Corner Record was received July 28th 2008 and examined and filed Aug 5th 2008.

Signed R. Tom Hunter Title County Surveyor

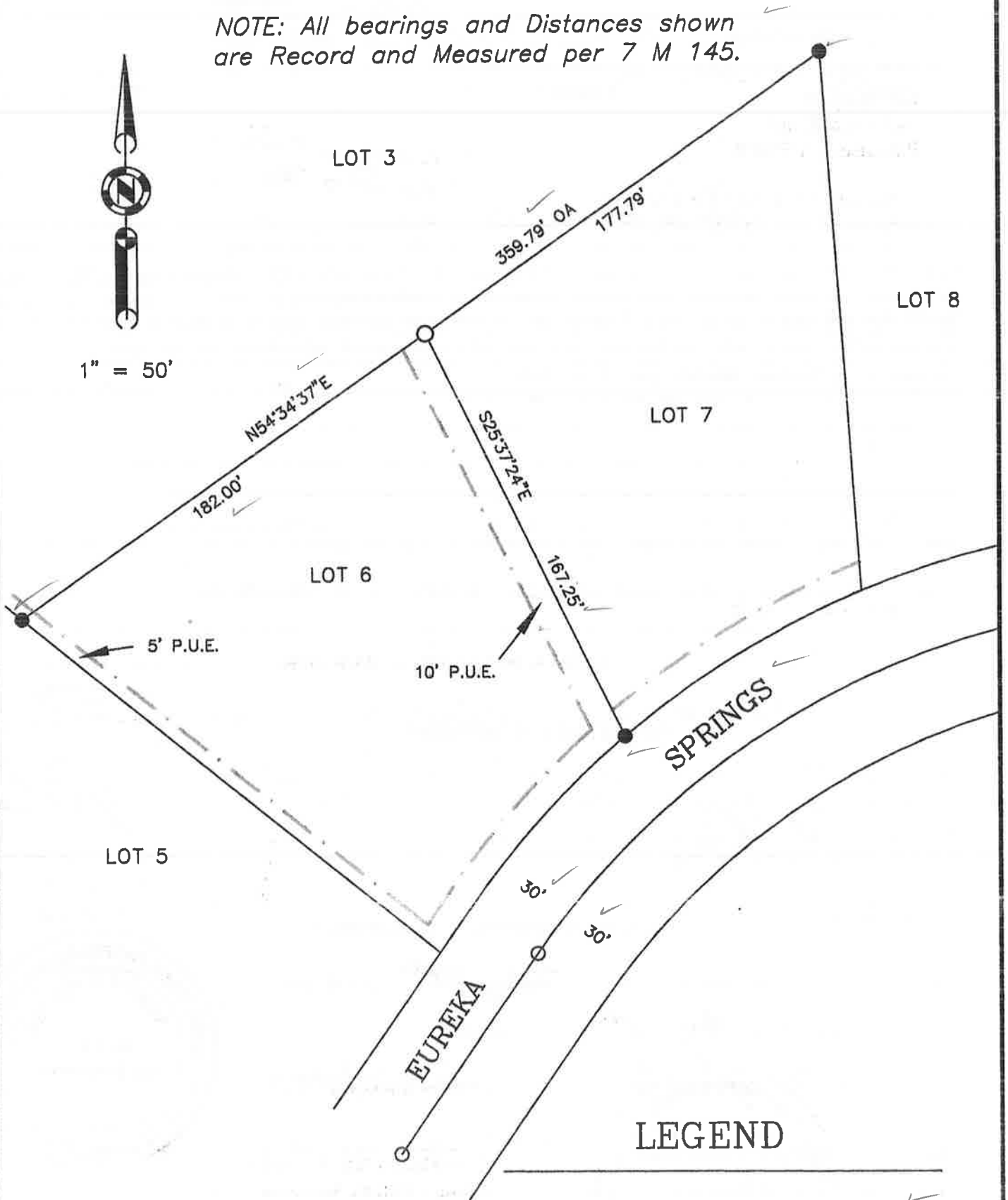


County Surveyor's Comment _____

NOTE: All bearings and Distances shown are Record and Measured per 7 M 145.



1" = 50'



LEGEND

- FOUND Rebar with Aluminum Cap LS 2843
- SET 5/8" Rebar with Aluminum Cap LS 5620