

CORNER RECORD

Document Number 372

T. 23 N., R 14 E. S. 16 MDM

County of Plumas, California

Brief Legal Description Lot 139, 140, & 141 Grizzly Ranch Unit 3, 9 M 128


CORNER TYPE

Government Corner  Control   
 Meander  Property   
 Rancho  Other   
 Date of Survey July 25, 2008

COORDINATES (Optional)

N. \_\_\_\_\_  
 E. \_\_\_\_\_  
 Zone \_\_\_\_\_ Datum \_\_\_\_\_  
 Elev. \_\_\_\_\_

Corner- Left as found  Found and tagged  Established  Reestablished  Rebuilt

Identification and type of corner found: Evidence used to identify or procedure used to establish or reestablish the corner: Found Rebar with Aluminum Cap, LS 2843, at locations shown on attached sketch.

A description of the physical condition of the monument as found and as set or reset: \_\_\_\_\_  
 Set Nail and tag LS 5620 at Westerly Corner common to Lots 139 & 140.  
 Set 5/8" rebar with Aluminum Cap LS 5620 at most Northerly corner of Lot 141 as shown on attached sketch.

SURVEYOR'S STATEMENT

This Corner Record was prepared by me or under my direction in conformance with the Land Surveyors' Act on August 6, 2008.

Signed John L. Owen L.S. 5620  
John L. Owen



COUNTY SURVEYOR'S STATEMENT

This Corner Record was received Aug. 11, 2008 and examined and filed \_\_\_\_\_ 2008.

Signed Tom Hunter Title County Surveyor  
RCE 30515



County Surveyor's Comment \_\_\_\_\_

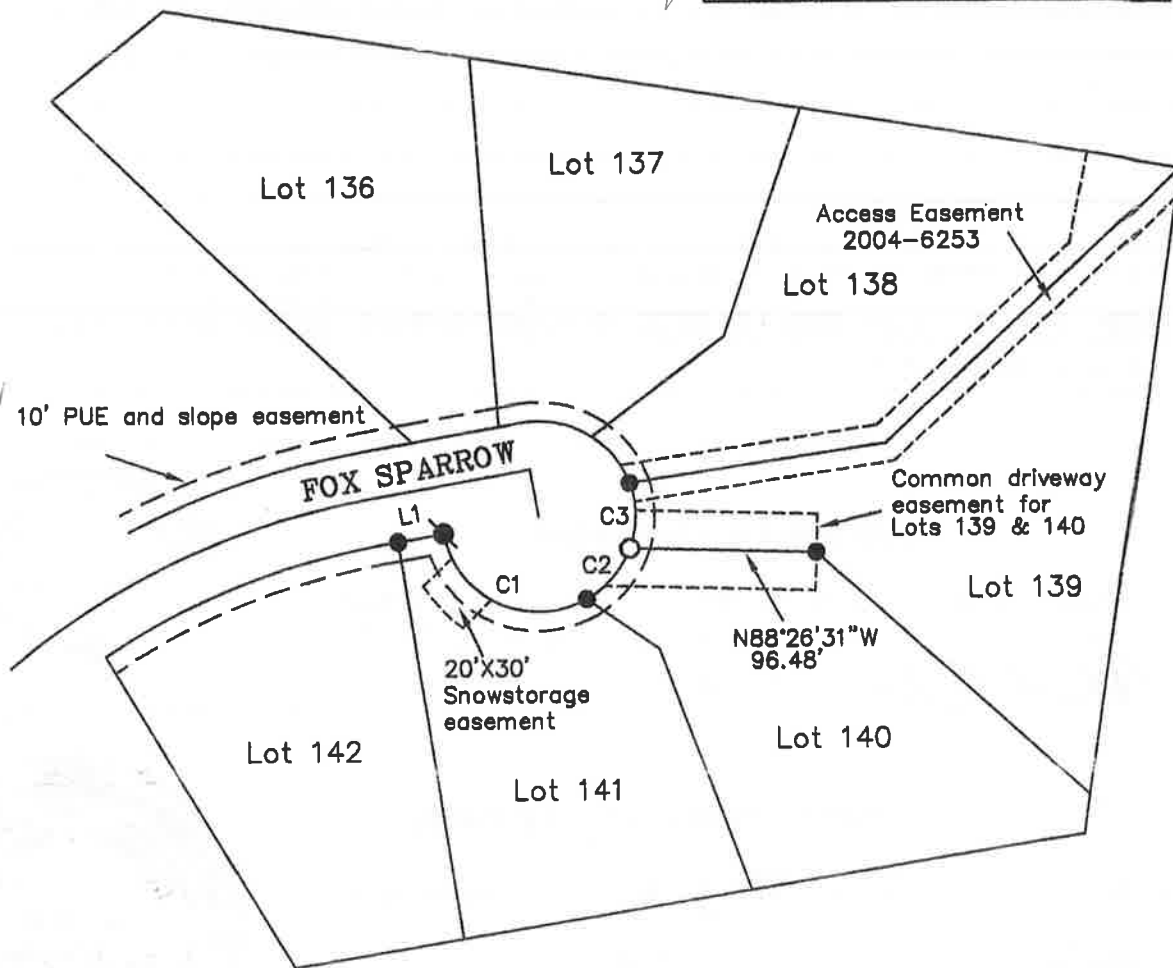
All Bearings and Distances are Record and Measured per 9 M 128



1" = 100'

LINE TABLE		
LINE	BEARING	LENGTH
L1	N79°51'09"E	24.07'

CURVE TABLE			
CURVE	LENGTH	RADIUS	DELTA
C1	95.56	50.00	109°30'32"
C2	35.27	50.00	40°24'58"
C3	34.97	50.00	40°04'02"



**LEGEND**

- FOUND Rebar with Aluminum Cap LS 2843
- SET Nail & tag LS 5620
- ⦿ SET 5/8" Rebar & Aluminum Cap LS 5620