

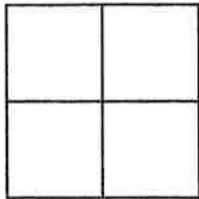
CORNER RECORD

Document Number 374

T. 23 N., R 14 E. S. 21 MDM

County of Plumas, California

Brief Legal Description Lot 250 and 251 Grizzly Ranch Unit 5, 10 M 38



CORNER TYPE

Government Corner  Control   
Meander  Property   
Rancho  Other   
Date of Survey July 25, 2008

COORDINATES (Optional)

N. \_\_\_\_\_  
E. \_\_\_\_\_  
Zone \_\_\_\_\_ Datum \_\_\_\_\_  
Elev. \_\_\_\_\_

Corner- Left as found  Found and tagged  Established  Reestablished  Rebuilt

Identification and type of corner found: Evidence used to identify or procedure used to establish or reestablish the corner:  
Found Rebar with Aluminum Cap, LS 6469, at locations shown on attached sketch.

A description of the physical condition of the monument as found and as set or reset: \_\_\_\_\_  
Set 5/8" rebar with Aluminum Cap, LS 5620, at locations shown on attached sketch.

SURVEYOR'S STATEMENT

This Corner Record was prepared by me or under my direction in conformance with the Land Surveyors' Act on August 25, 2008.

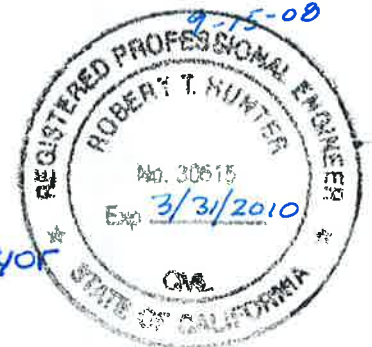
Signed John L. Owen L.S. 5620  
John L. Owen



COUNTY SURVEYOR'S STATEMENT

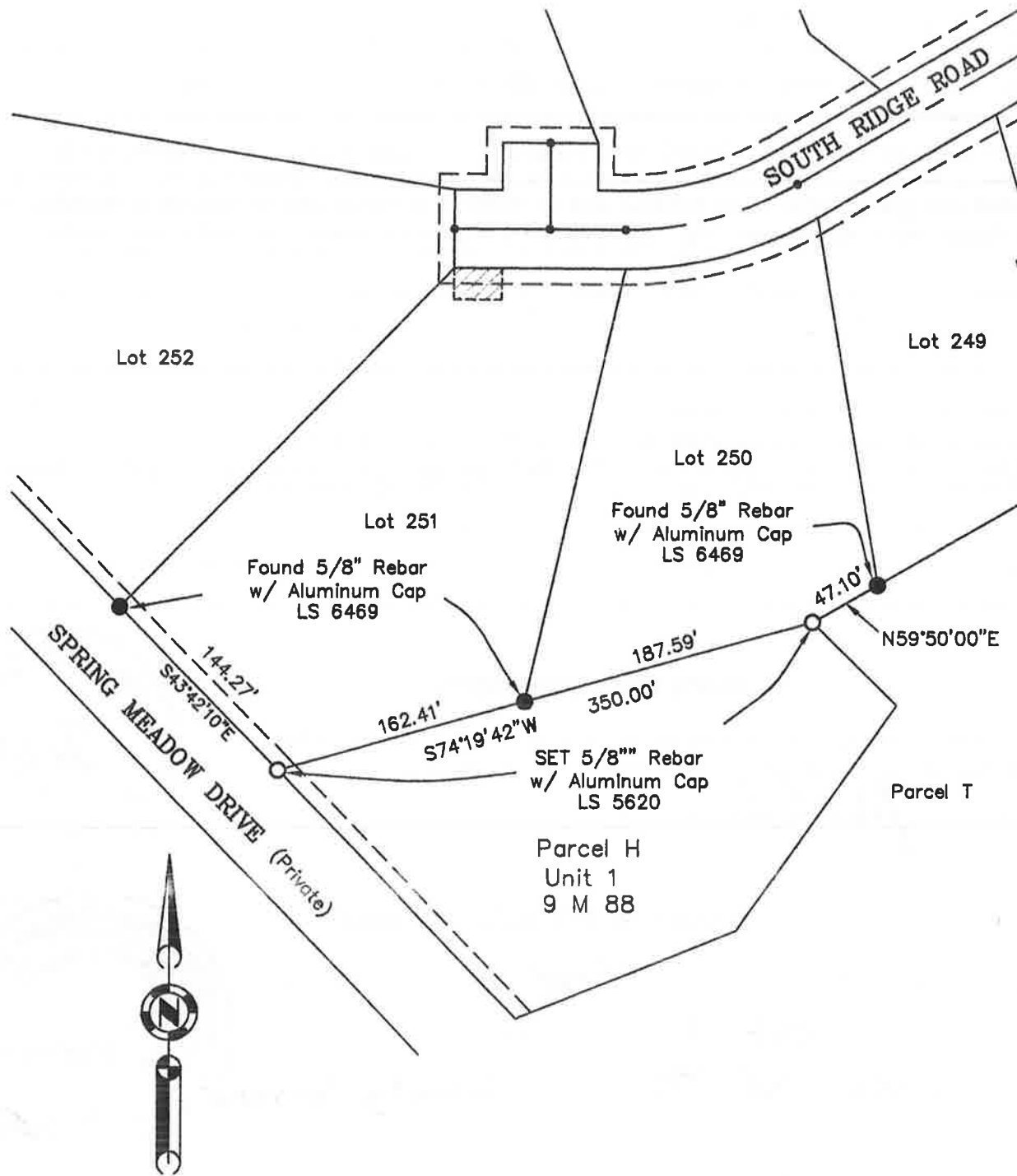
This Corner Record was received Sept. 2 2008 and examined and filed Oct. 31 2008.

Signed R. Tom Hunter Title County Surveyor



County Surveyor's Comment \_\_\_\_\_

All Bearings and Distances are Record and Measured per 10 M 38



1" = 100'