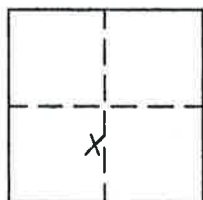


CORNER RECORD

Document Number 378

Section 35, T. 23 N., R. 16 E., M.D.M. County of Plumas, California

Brief Legal Description Parcel 4, per 12 Parcel Maps page 13. Plumas County records.



CORNER TYPE

Government Corner  Control   
Meander  Property   
Rancho  Other   
Date of Survey 11-06-2008

COORDINATES (Optional)

N. \_\_\_\_\_  
E. \_\_\_\_\_  
Zone \_\_\_\_\_ Datum \_\_\_\_\_  
Elev. \_\_\_\_\_

Corner-- Left as found  Found and tagged  Established  Reestablished  Rebuilt

Identification and type of corner found: Evidence used to identify or procedure used to establish or reestablish the corner:  
Set corners from found corners as shown on attached sketch.

A description of the physical condition of the monument as found and as set or reset:  
Set corners as shown on attached sketch.

SURVEYOR'S STATEMENT

This Corner Record was prepared by me or under my direction in conformance with the Land Surveyors' Act on November 11, 2008.

Signed John L. Owen L.S. 5620  
John L. Owen



COUNTY SURVEYOR'S STATEMENT

This Corner Record was received Dec. 1st 2008 and examined and filed 12/22 2008.

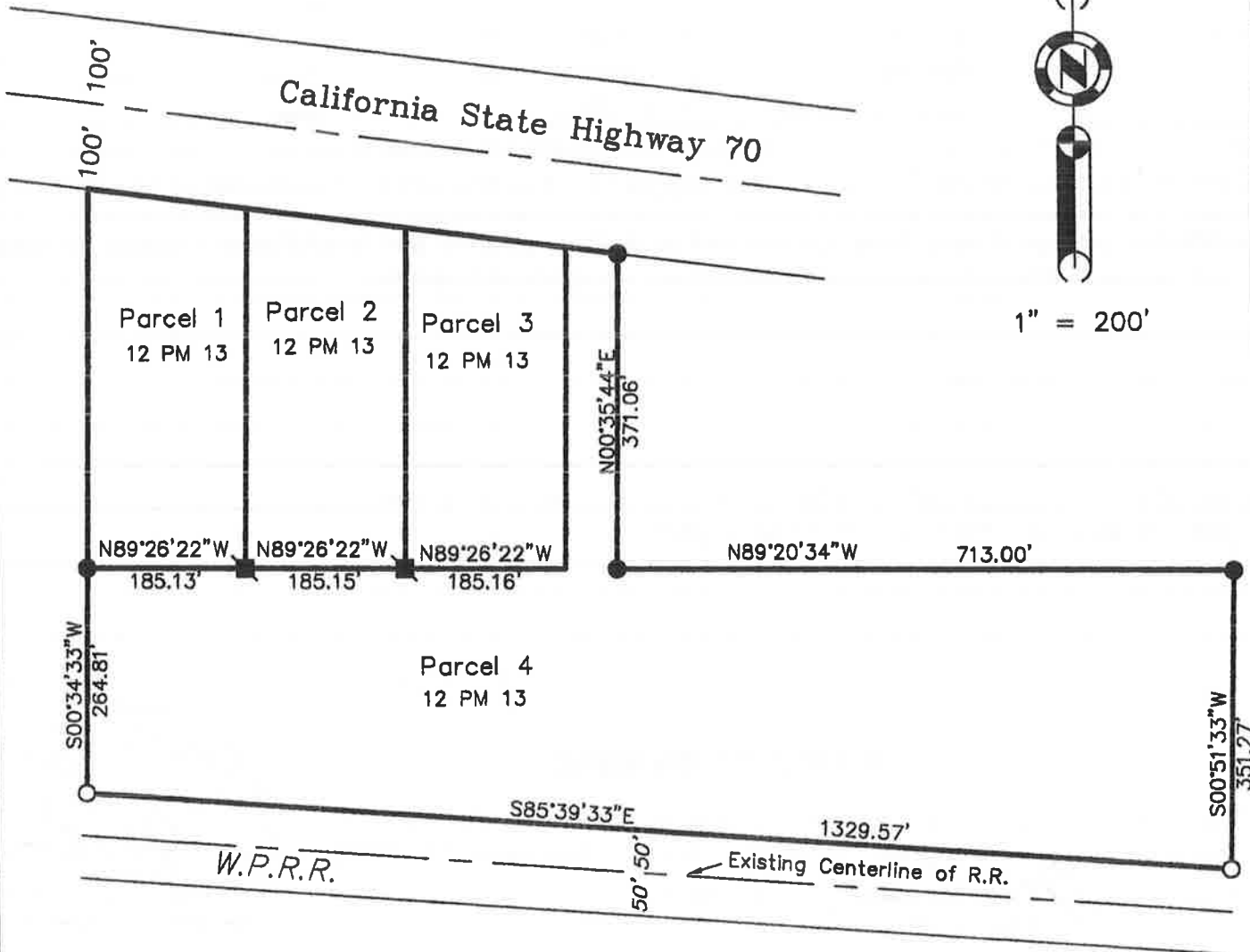
Signed Robert T. Hunter Title County Surveyor  
Robert T. Hunter RGE 30515  
EXPIRES 3/31/2010  
County Surveyor's Comment \_\_\_\_\_



NOTE: All bearings and distances are record per 12 PM 13.



1" = 200'



## LEGEND

- FOUND 1/2" Rebar with aluminum Cap LS 2843 per 12 PM 13
- FOUND 5/8" Rebar & Aluminum Cap LS 2843 per 12 PM 13
- SET 5/8" Rebar & Aluminum Cap LS 5620