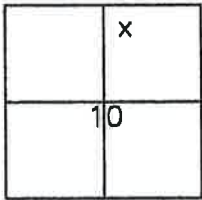


CORNER RECORD

Document Number 379

Portion of Section 10, T. 22 N., R. 13 E., M.D.M. County of Plumas, California

Brief Legal Description Lot 102, Iron Horse Rancho Subdivision, 3 Maps 110



CORNER TYPE

Government Corner  Control   
 Meander  Property   
 Rancho  Other   
 Date of Survey December 2, 2008

COORDINATES (Optional)

N. \_\_\_\_\_  
 E. \_\_\_\_\_  
 Zone \_\_\_\_\_ Datum \_\_\_\_\_  
 Elev. \_\_\_\_\_

Corner-- Left as found  Found and tagged  Established  Reestablished  Rebuilt

Identification and type of corner found: Evidence used to identify or procedure used to establish or reestablish the corner:

- ✓ Found 3/4" I.P. at NW corner Lot 103 and SW & SE corners Lot 101 in good condition.
- ✓ Found 1/2" square head Bolt at NE corner of Lot 102 in good condition.

A description of the physical condition of the monument as found and as set or reset:

Set 5/8" Rebar with Aluminum Cap, LS 5620, at NW corner of Lot 102.  
 Set 5/8" Rebar with Aluminum Cap, LS 5620, marked RW 20 102, on Road Easement line at locations shown on attached sketch.

SURVEYOR'S STATEMENT

This Corner Record was prepared by me or under my direction in conformance with the Land Surveyors' Act on December 4, 2008.

Signed John L. Owen L.S. 5620  
 John L. Owen

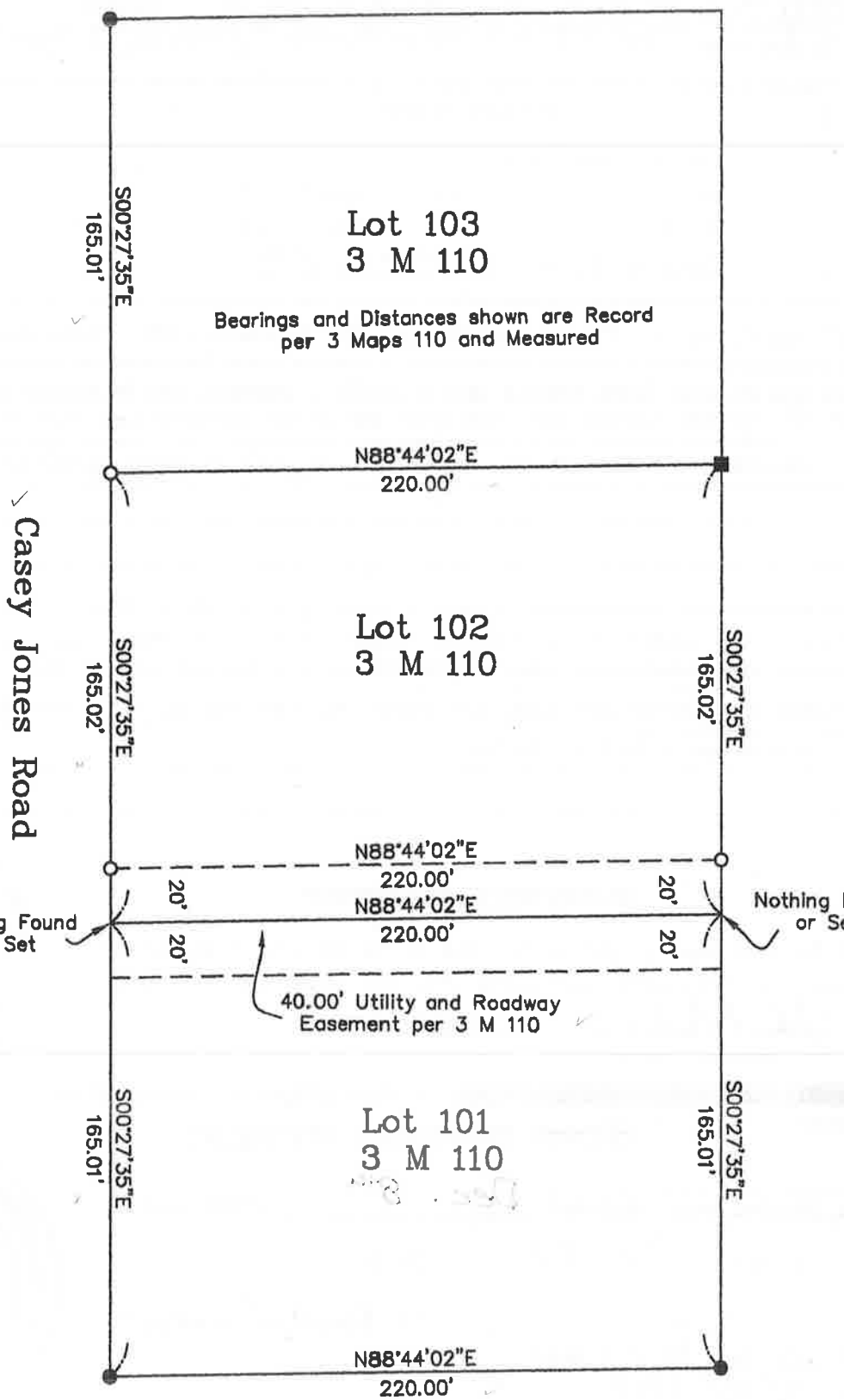


COUNTY SURVEYOR'S STATEMENT

This Corner Record was received Dec. 8<sup>th</sup> 2008 and  
 examined and filed Dec 22, 2009.

Signed Robert T. Hunter Title County Surveyor  
Robert T. Hunter RCE 30515  
Expires 3/31/2010  
 County Surveyor's Comment \_\_\_\_\_





Bearings and Distances shown are Record per 3 Maps 110 and Measured



1" = 60'

Nothing Found or Set

Nothing Found or Set

40.00' Utility and Roadway Easement per 3 M 110

**LEGEND**

- FOUND 1/2" square head Bolt accepted as set per 3 M 110
- FOUND 3/4" I.P., Open, accepted as set per 3 M 110
- SET 5/8" Rebar with Aluminum Cap LS 5620