

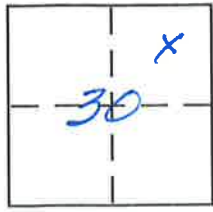
**CORNER RECORD**

Document Number 380

City of Lake Almanor

County of Plumas, California

Brief Legal Description Lot 15, Blk. 1, LACC # 2 (R/M 1-67) Sec. 30, T28NR8E



**CORNER TYPE**

- Government Corner  Control
- Meander  Property
- Rancho  Other
- Date of Survey \_\_\_\_\_

**COORDINATES (Optional)**

- N. \_\_\_\_\_
- E. \_\_\_\_\_
- Zone \_\_\_\_\_ NAD27  NAD83
- NAD83 Epoch \_\_\_\_\_
- Elev. \_\_\_\_\_
- Vert. Datum: NGVD29  NAVD88
- Meas. Units: Metric  Imperial

Corner - Left as found  Found and tagged  Established  Reestablished  Rebuilt

Identification and type of corner found: Evidence used to identify or procedure used to establish or reestablish the corner:  
3/4" i.p.'s. tagged RCE 6185 per R/M 1-67.

A description of the physical condition of the monument as found and as set or reset:  
End monuments are old rusty pipes. Monuments set are new 1/2" rebars 24" long.

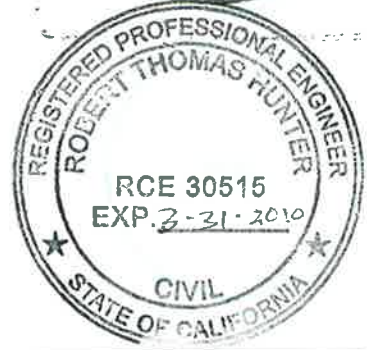
**SURVEYOR'S STATEMENT**

This Corner Record was prepared by me or under my direction in conformance with the Land Surveyor's Act on 9/10/09  
Signed Vernon H. Templeton P.L.S or R.C.E. No. 4647




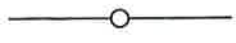
**COUNTY SURVEYOR'S STATEMENT**

This Corner Record was received Sept. 17, 2009  
and examined and filed Nov. 9, 2009  
Signed R Tom Spunth P.L.S or R.C.E. No. RCE 30515  
Title County Surveyor



County Surveyor's Comment \_\_\_\_\_

# LEGEND

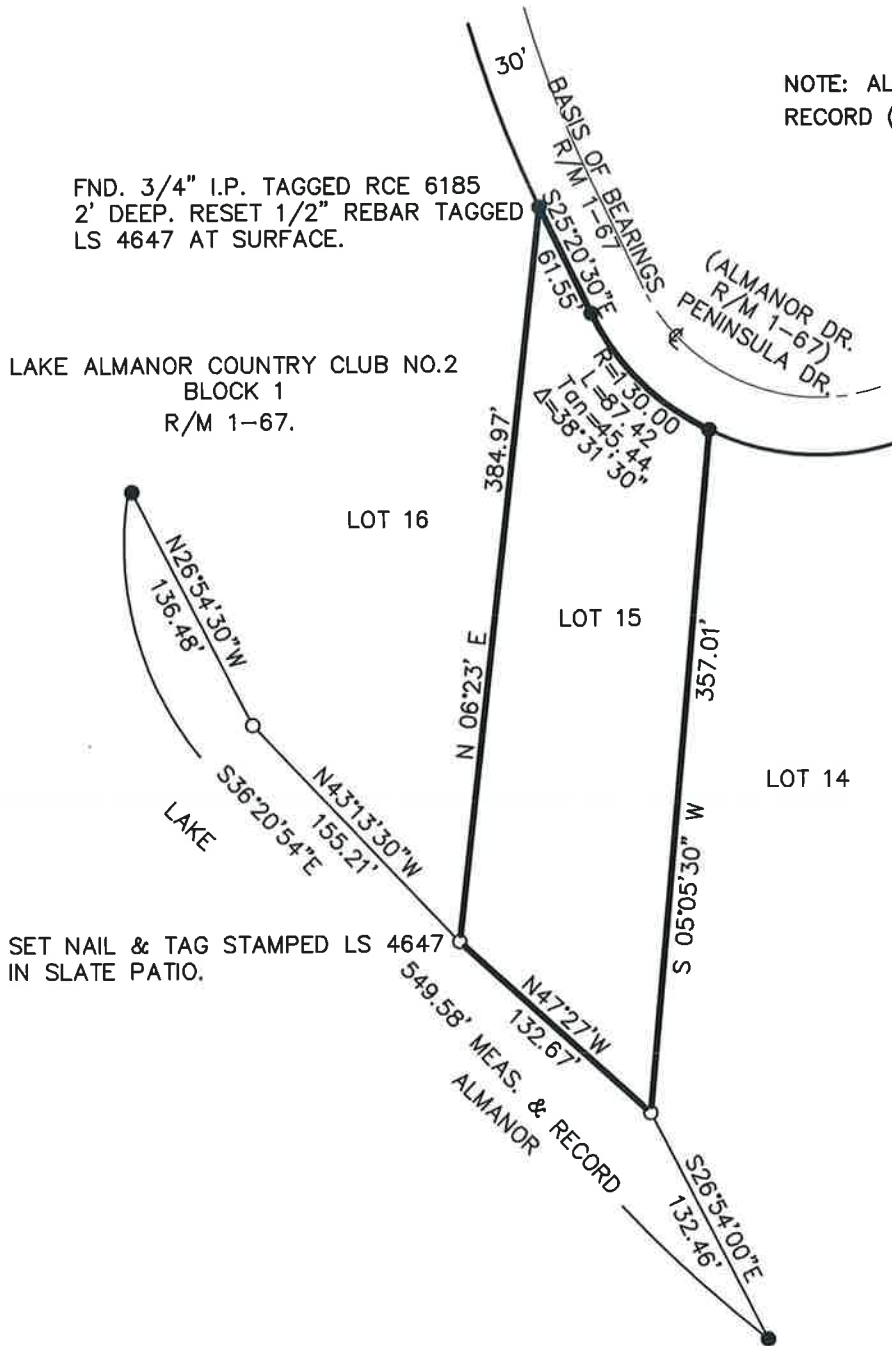
-  FOUND 3/4" I.P. TAGGED RCE 6185 R/M 1-67.
-  SET 1/2" REBAR W/ CAP STAMPED LS 4647, EXCEPT AS NOTED.



FND. 3/4" I.P. TAGGED RCE 6185  
2' DEEP. RESET 1/2" REBAR TAGGED  
LS 4647 AT SURFACE.

NOTE: ALL BEARINGS & DISTANCES ARE  
RECORD (R/M 1-67) & MEASURED.

LAKE ALMANOR COUNTRY CLUB NO.2  
BLOCK 1  
R/M 1-67.



SKETCH OF SURVEY