

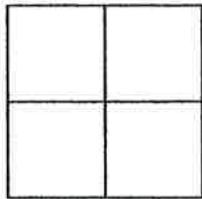
CORNER RECORD

Document Number 381

S. 36, T. 23N, R. 13E, M.D.M.

County of Plumas, California

Brief Legal Description Lots 22, 23 & 24 in Block 8
Northern Addition to Portola Townsite, Book "A" Maps 32



CORNER TYPE

COORDINATES
(Optional)

Government Corner Control
Meander Property
Rancho Other
Date of Survey March 15, 2010

N. _____
E. _____
Zone _____ Datum _____
Elev. _____

Corner- Left as found Found and tagged Established Reestablished Rebuilt

Identification and type of corner found: Evidence used to identify or procedure used to establish or reestablish the corner:
Found corners shown on 15 RS 21 in good condition as shown on attached sketch.

A description of the physical condition of the monument as found and as set or reset: _____
Set Easterly corners of Lot 24 in Block 8, 5/8" rebar with Aluminum Cap LS 5620
in record position shown on 15 RS 21 as shown on attached sketch.

SURVEYOR'S STATEMENT

This Corner Record was prepared by me or under my direction in conformance with the Land Surveyors' Act on March 15, 2010.

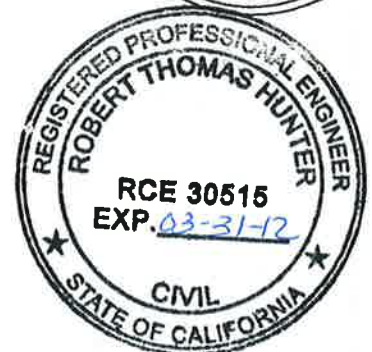
Signed John L. Owen L.S. 5260
John L. Owen



COUNTY SURVEYOR'S STATEMENT

This Corner Record was received June 1, 2010 and examined and filed June 14, 2010.

Signed R. Tom Hunter Title County Surveyor



County Surveyor's Comment _____

18E

Basis of Bearings

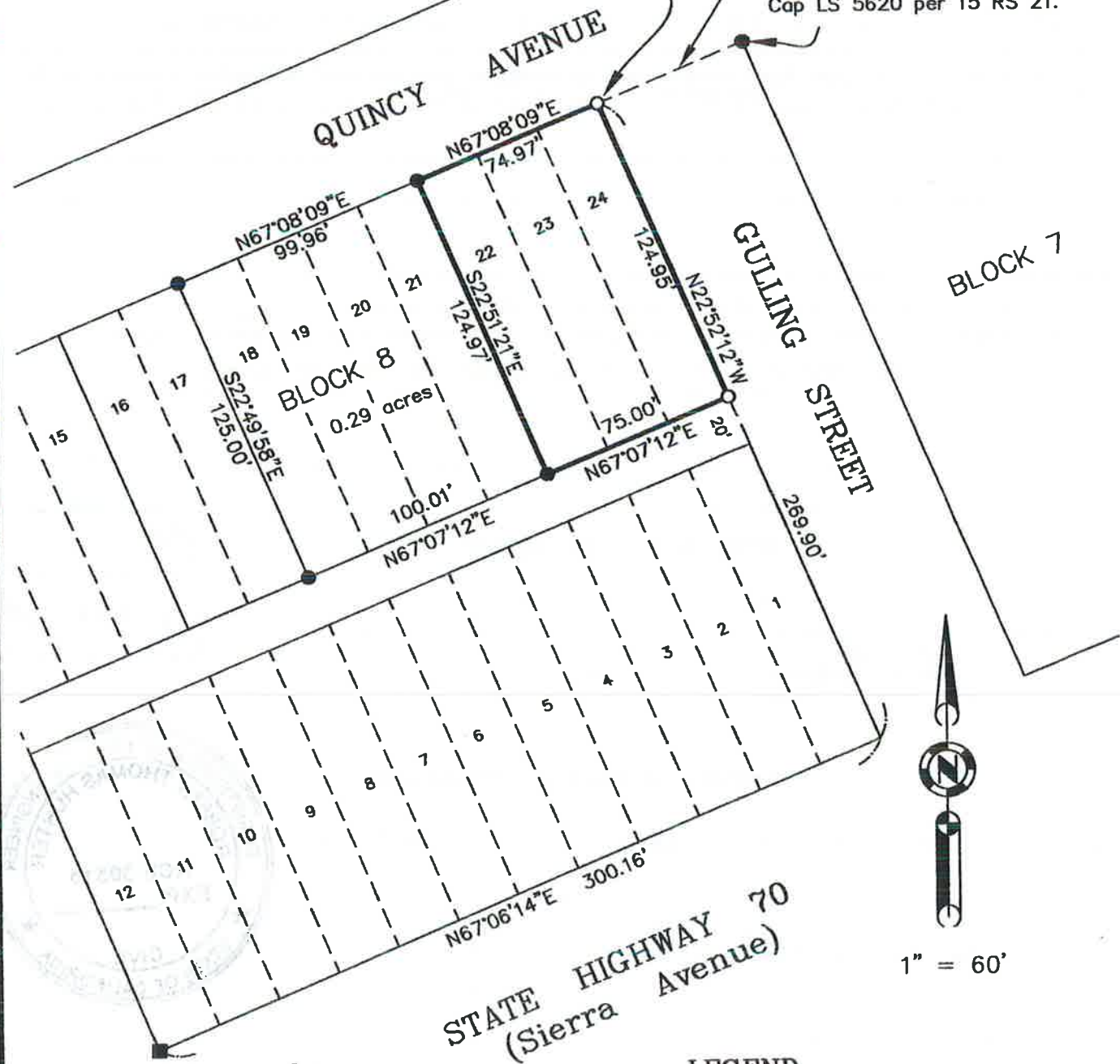
The Basis of Bearings of this map is identical to that shown in Book 15 of Record of Surveys at Page 21, Plumas County records.

Bearings and Distances are Record and Measured per 15 RS 21

Found 1/2" I.P. N 11°14'33" W, 0.20' from set position

N67°08'09"E 60.00'

Found 5/8" Rebar w/ Aluminum Cap LS 5620 per 15 RS 21.



Found Aluminum Cap stamped Caltrans per corner record #122 which replaced 3/4" I.P. per 9 RS 113 shown as Southwest corner of Block 8.

STATE HIGHWAY 70 (Sierra Avenue)



1" = 60'

LEGEND

- FOUND point as described
- FOUND 5/8" Rebar with Aluminum Cap LS 5620
- SET 5/8" Rebar with Aluminum Cap LS 5620

10008