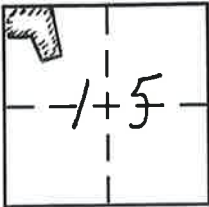


CORNER RECORD

Document Number 386

City of UNINCORPORATED AREA County of PLUMAS, California

Brief Legal Description PARCEL 6 OF 8 PM 86, SEC 15, T22N, R14E MDM



CORNER TYPE

- Government Corner Control
- Meander Property
- Rancho Other
- Date of Survey _____

COORDINATES (Optional)

- N. _____
- E. _____
- Zone _____ NAD27 NAD83
- NAD83 Epoch _____
- Elev. _____
- Vert. Datum: NGVD29 NAVD88
- Meas. Units: Metric Imperial

Corner - Left as found Found and tagged Established Reestablished Rebuilt

Identification and type of corner found: Evidence used to identify or procedure used to establish or reestablish the corner:

● FOUND 1/2" CAPPED REBAR LS 2843 PER 8 PM 86

● FOUND CAPPED REBAR LS 3297 PER 8 PM 86

A description of the physical condition of the monument as found and as set or reset:

⊙ SET 5/8" REBAR WITH CAP RCE 27787

SURVEYOR'S STATEMENT

This Corner Record was prepared by me or under my direction in conformance with the Land Surveyor's Act on 12-01-09

Signed Robt Coombs P.L.S or R.C.E. No. 27787

COUNTY SURVEYOR'S STATEMENT

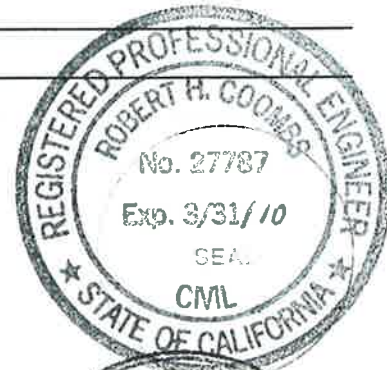
This Corner Record was received December 17th 2009

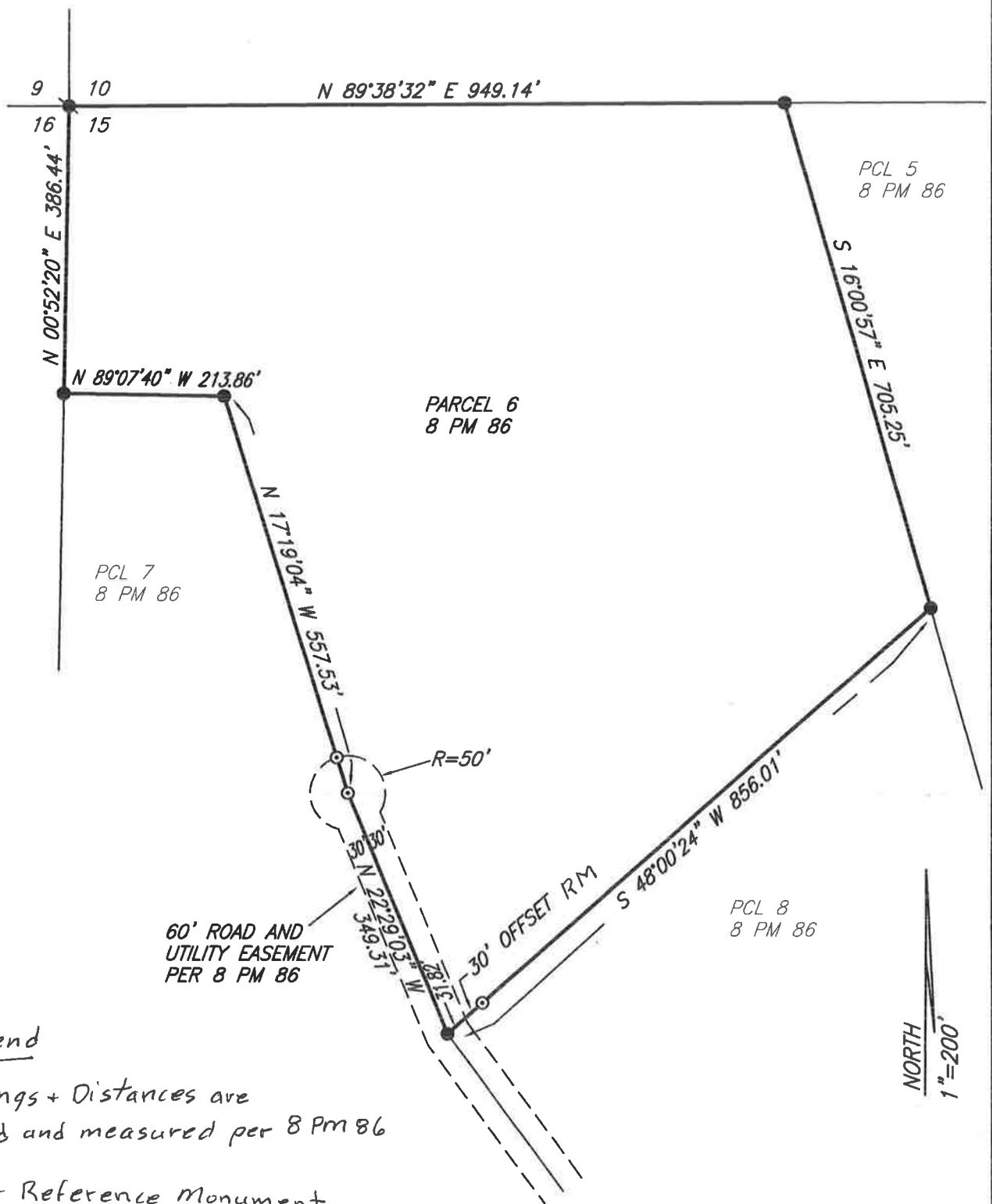
and examined and filed December 9, 2010

Signed R Tom Hunter P.L.S or R.C.E. No. 30515

Title County Surveyor

County Surveyor's Comment _____





Legend

-Bearings + Distances are record and measured per 8 PM 86

-RM = Reference Monument