

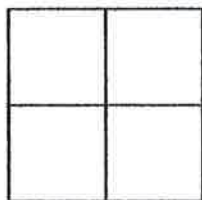
CORNER RECORD

Document Number 387

S. 10 & 11, T. 22N, R. 13E, M.D.M.

County of Plumas, California

Brief Legal Description Lot 54, Iron Horse Rancho, 3 Maps 110



CORNER TYPE

Government Corner Control
Meander Property
Rancho Other
Date of Survey November 9, 2010

COORDINATES (Optional)

N. _____
E. _____
Zone _____ Datum _____
Elev. _____

Corner- Left as found Found and tagged Established Reestablished Rebuilt

Identification and type of corner found: Evidence used to identify or procedure used to establish or reestablish the corner:
Found 3/4" I.P. at Northwest corner of Lot 54 and Found 1/2" diameter
by 1" square head bolt at Northeast corner of Lot 55 both in good condition.

A description of the physical condition of the monument as found and as set or reset: _____
Set 5/8" rebar with aluminum cap LS 5620 in record position per 3 Maps 110 as
shown on attached sketch.

SURVEYOR'S STATEMENT

This Corner Record was prepared by me or under my direction in conformance with the Land Surveyors' Act on November 16, 2010.

Signed John L. Owen L.S. 5260
John L. Owen



11-17-10

COUNTY SURVEYOR'S STATEMENT

This Corner Record was received Dec. 2nd 2010 and
examined and filed January 5 2010.

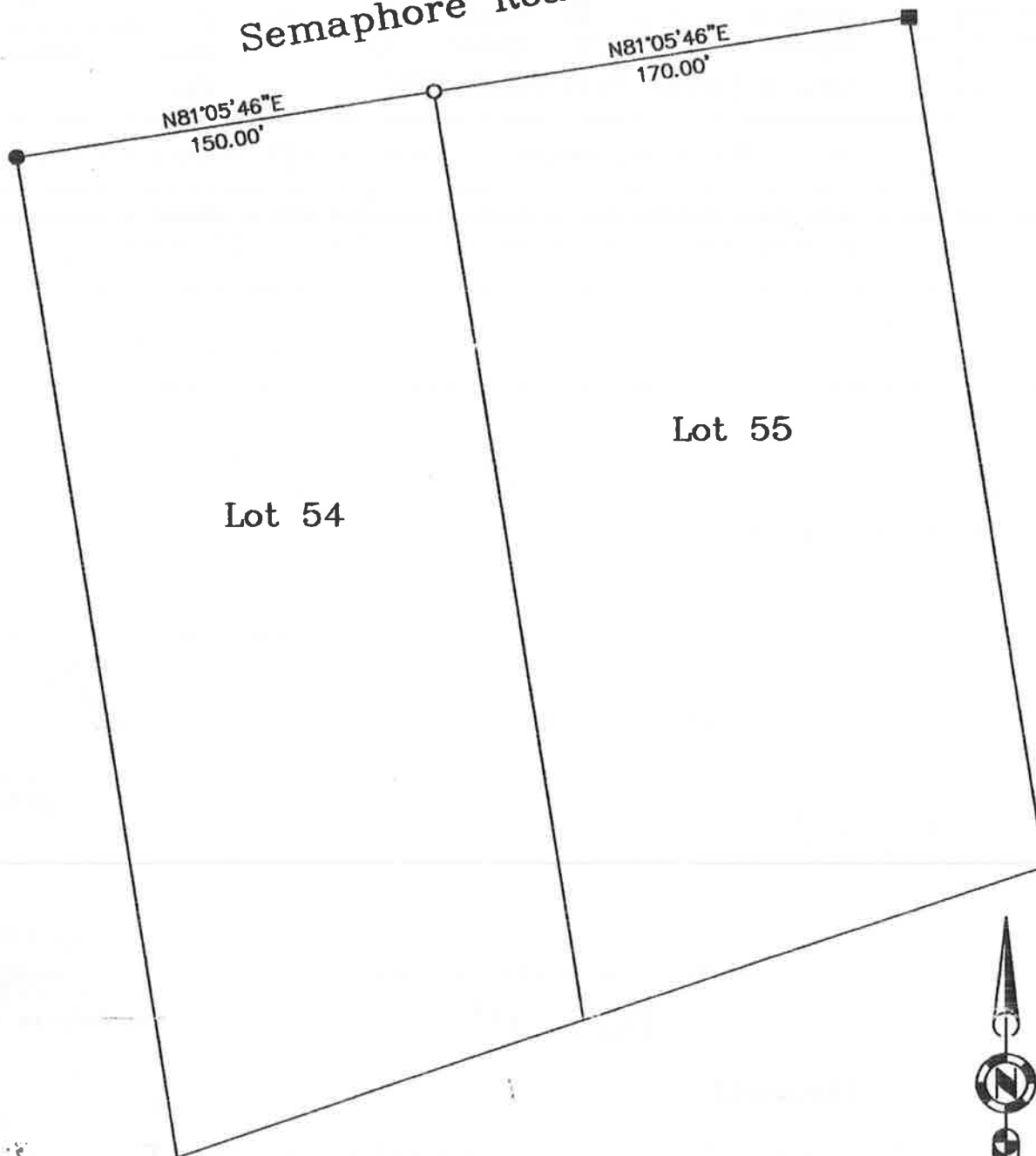
Signed R Tom Hunter Title County Surveyor



County Surveyor's Comment _____

Bearings and Distances are Record and Measured per 3 Maps 110.

Semaphore Road



LEGEND

- FOUND 1/2" diameter by 1" square head bolt
- FOUND 3/4" I.P. wood plug, no tag
- SET 5/8" Rebar with Aluminum Cap LS 5620



1" = 60'