

CORNER RECORD

Document Number 388

Nearest Town Portola
County of Plumas California

Reset the southeast corner of Parcel 2, Book 590 of Official Records, Page 728 (the corner of Parcel 2, common to Grizzly Road, Parcel 2 shown in Book 9 of Records of Surveys, Page 101 and Lot 86, Book 2 of Subdivision Maps, Page 11) and reset the east angle point of said Parcel 2, within Section 8, Township 23 North, Range 14 East, Mount Diablo Meridian.

CORNER TYPE

Property corners

Date of Survey April 3, 2011

Corner Left as found _ Found and tagged _ Established _
Reestablished X Rebuilt _

Identification and type of corner found: Evidence used to identify or procedure used to establish or reestablish the corner:

See Sketch – Page 2

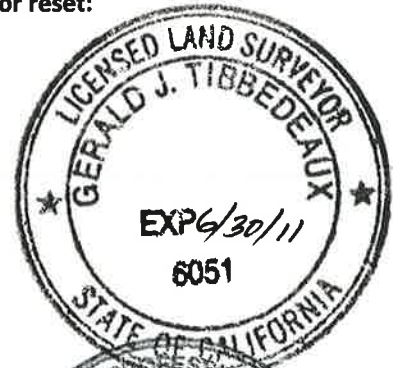
A description of the physical condition of the monument as found and as set or reset:

See Sketch – Page 2

SURVEYOR'S STATEMENT

THIS CORNER RECORD WAS PREPARED BY ME OR UNDER MY DIRECTION IN CONFORMANCE WITH THE LAND SURVEYORS' ACT ON APRIL 4, 2011

Signed Gerald Joseph Tibbedeaux P.L.S. 6051
Gerald Joseph Tibbedeaux



COUNTY SURVEYOR'S STATEMENT

THIS CORNER RECORD WAS RECEIVED April 25, 2011
AND EXAMINED AND FILED April 29, 2011

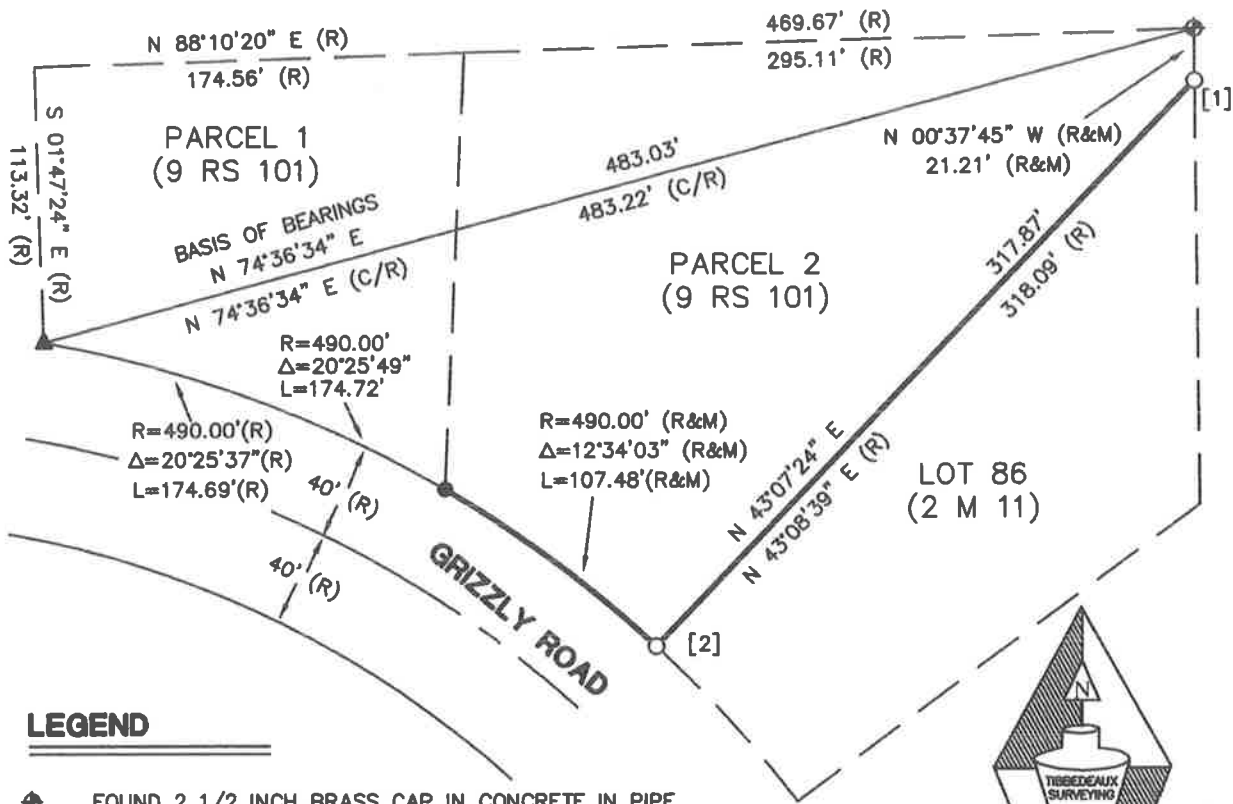
Signed R. Tom Hunter R.C.E. 30515
R. Tom Hunter, Plumas County Surveyor
License Expires 03/31/12



County Surveyor's Comment

BASIS OF BEARINGS

THE BEARING OF N 74°36'34" E FROM THE SOUTHWEST CORNER OF PARCEL 1 TO THE NORTHEAST CORNER OF PARCEL 2, CALCULATED FROM INFORMATION SHOWN IN BOOK 9 OF RECORDS OF SURVEYS AT PAGE 101, IS THE BASIS OF BEARINGS SHOWN ON THIS MAP.



LEGEND

- ◆ FOUND 2 1/2 INCH BRASS CAP IN CONCRETE IN PIPE STAMPED C - C, E 1/16, S 8, 1959 (R)
- ▲ FOUND 1/2" REBAR & PLASTIC CAP LS 3297 (R)
- FOUND 5/8" REBAR & PLASTIC CAP LS 2843 (R)
- SET 1/2" REBAR & ALUMINUM CAP PLS 6051, SEE CORNER NOTES
- (R) RECORD INFORMATION PER BOOK 9 OF RECORDS OF SURVEYS, PAGE 101
- (C/R) INFORMATION CALCULATED FROM RECORD INDICATED
- [No.] KEY TO CORNER NOTES
- (M) MEASURED INFORMATION



SCALE 1 INCH = 80 FEET

CORNER NOTES

- [1] FOUND 1/2" IRON PIPE AND TAG LS 2843 DISTURBED BY FENCE CONSTRUCTION, REPLACED WITH 1/2" REBAR & ALUMINUM CAP PLS 6051.
- [2] FOUND SPIKE 2 FEET BELOW GRADE IN DRIVEWAY, DISTURBED BY CONSTRUCTION, SET 1/2" REBAR AND ALUMINUM CAP PLS 6051 AT DRIVEWAY GRADE

Tibbedeaux Surveying
 P.O. Box 1980 - 565 Ridge Street
 Portola, CA 96122
 (530) 832-5772

2011-02

SKETCH OF MONUMENT REPLACEMENT FOR

RONALD J. AND JOYCE E. SEARS

SOUTHEAST LINE OF PARCEL 2, BOOK 9
 OF RECORDS OF SURVEYS, PAGE 101
 WITHIN SECTION 8, T. 23N., R. 14E., M.D.M

PLUMAS COUNTY CALIFORNIA

SCALE 1 INCH = 80 FEET APRIL 2011