

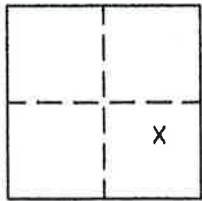
CORNER RECORD

Document Number 389

Portion of Section 34, T. 23 N., R. 13 E., M.D.M.

County of Plumas, California

Brief Legal Description—Corner common to Lots 13 & 14, 2 M 86



CORNER TYPE

Government Corner Control
Meander Property
Rancho Other
Date of Survey 5-24-2011

COORDINATES (Optional)

N. _____
E. _____
Zone NAD27 NAD83
NAD83 Epoch _____
Elev. _____
Vert. Datum: NAD27 NAD83
Meas. Units Metric Imperial

Corner— Left as found Found and tagged Established Reestablished Rebuilt

Identification and type of corner found: Evidence used to identify or procedure used to establish or reestablish the corner:
Set corner from found corners at the most Southerly corner of Lot 13, most Easterly corner of Lot 14, and most Westerly corner of Lot 19 of Book 2 of Maps at page 86 as shown on attached sketch.

A description of the physical condition of the monument as found and as set or reset: Set 5/8" rebar with Aluminum Cap stamped LS 5620 at record position as shown on attached sketch.

SURVEYOR'S STATEMENT

This Corner Record was prepared by me or under my direction in conformance with the Land Surveyors' Act on May 24, 2011.

Signed John L. Owen L.S. 5620
John L. Owen



COUNTY SURVEYOR'S STATEMENT

This Corner Record was received September 1 2011 and examined and filed September 7 2011.

Signed R. Tom Hunter P.L.S. or R.C.E. No. 30515
Title Plumas Co. Surveyor

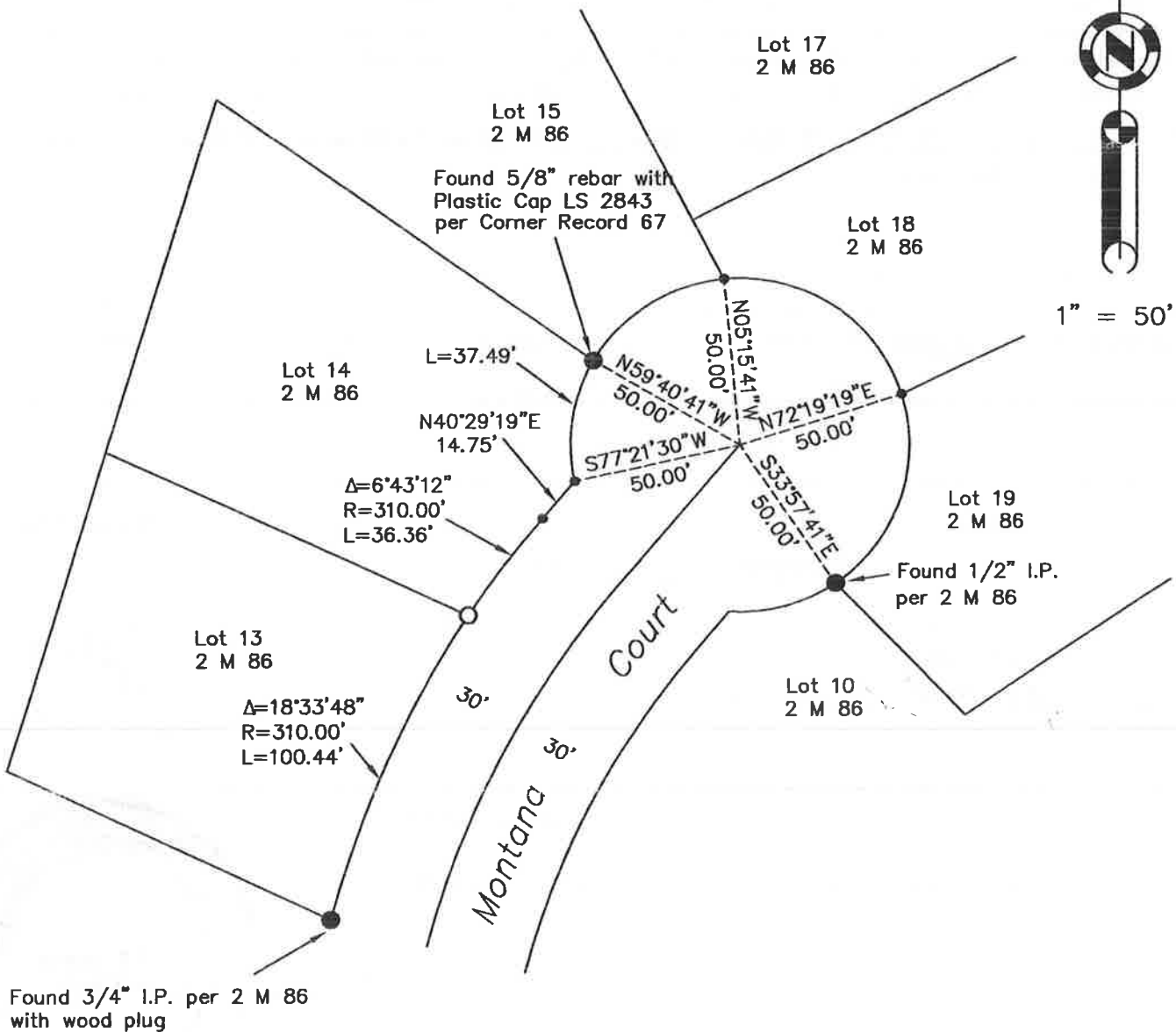
County Surveyor's Comment _____



LEGEND

- FOUND corner as described
- SET 5/8" rebar with Aluminum Cap LS 5620
- Nothing found or set

Note: All bearings and distances shown are record per Book 2 of Maps at pages 86 and 87.



Lot 13 & 14, 2 M 86
 Delleker Subdivision
 Located in Section 34
 T. 23 N., R. 13 E., M.D.M.
 Plumas County, California