

CORNER RECORD

Document Number 390

City of La Porte

County of Plumas, California

Brief Legal Description Corner LCE 1 & LC 2 of MS's 2601 & 2600, Section 2, T21N, R9E, MDM

SEC	
	2

CORNER TYPE

Government Corner Control
Meander Property
Rancho Other

Date of Survey 7/25/2011

COORDINATES(Optional)

N. 1779968.413
E. 6857020.642
Zone 1 NAD27 NAD83
NAD83 Epoch 2011.5662
Elevation _____
Vert. Datum: NGVD29 NAV88
Meas. Units: Metric Imperial

Corner - Left as found Found and tagged Established Reestablished Rebuilt

Identification and type of corner found: Evidence used to identify or procedure used to establish or reestablish the corner:

Found mound of stone per GLO.

A description of the physical condition of the monument as found and as set or reset: Set a 3 1/4" USFS aluminum cap on a 5/8" rod in rock mound. Set new bearing tree's.

SURVEYOR'S STATEMENT

This Corner Record was prepared by me or under my direction in conformance with

the Land Surveyor's Act on September 19, 2011.

Signed Hollis Lundy P.L.S. or R.C.E. Number 6373

COUNTY SURVEYOR'S STATEMENT

This Corner Record was received October 24, 2011 and examined

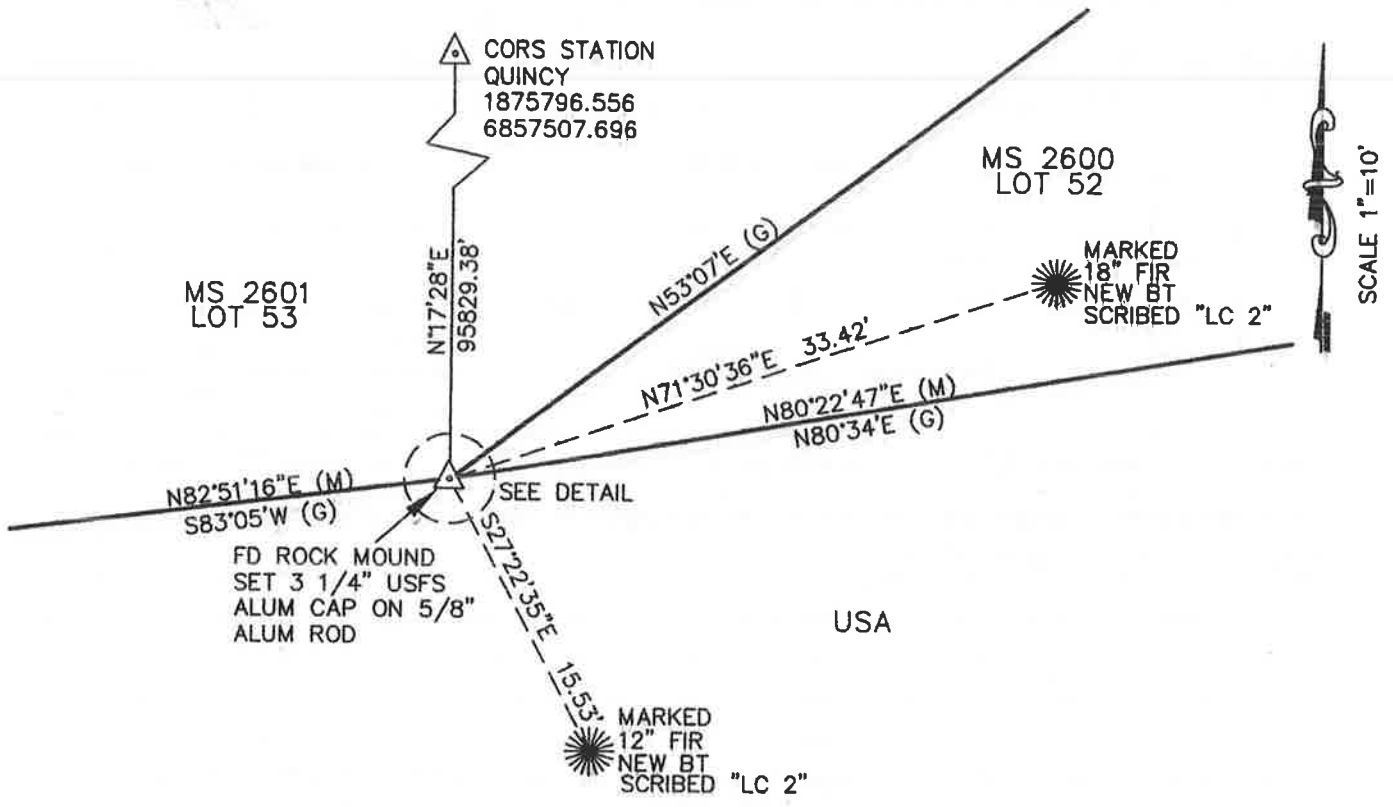
and filed December 27, 2011.

Signed R Tom Sluete P.L.S. or R.C.E. Number 30515

Title County Surveyor

County Surveyor's Comment _____



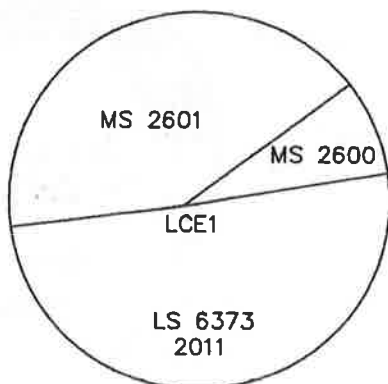


LEGEND

- (G) ORIGINAL GOVERNMENT SURVEY
- (M) MEASURED
- ☀ BEARING TREE
- △ FOUND MONUMENT AS NOTED

NOTE

THE BASIS OF BEARINGS
IS CALIFORNIA ZONE 1,
NAD 83 DERIVED FROM
GPS OBSERVATIONS



USFS ALUM CAP
NOT TO SCALE

**MINERAL SURVEY
FOR
USFS**

BEING A PORTION OF SECTION 2 & 3,
TOWNSHIP 21 NORTH, RANGE 9 EAST, MDM

11-07-041

AUGUST 2011



L & L SURVEYING

1007 HILLE ROAD PO BOX 671 PARADISE, CA 95967 (530)877-4300