

CORNER RECORD

Document Number 393

Nearest Town Quincy
County of Plumas California

Recover and set tag PLS 6051 at the property common to Pacific Tel & Tel, Anderson, and Stephen, shown in Book 2 of Records of Surveys, Page 130. Reset monument shown on said Record of Survey common to Bray, Anderson, and Lawrence Street and monument at the east angle point of the property common to Bray and Anderson, shown on said map. Within Lot 16 of Block 1 of the Town of Quincy, in Section 16, T. 24N., R. 9E., M. D. M.

CORNER TYPE

Property corners

Date of Survey November 9, 2011

Corner Left as found Found and tagged Established
Reestablished Rebuilt

Identification and type of corner found: Evidence used to identify or procedure used to establish or reestablish the corner:

See Sketch – Page 2

A description of the physical condition of the monument as found and as set or reset:

See Sketch – Page 2

SURVEYOR'S STATEMENT

THIS CORNER RECORD WAS PREPARED BY ME OR UNDER MY DIRECTION IN CONFORMANCE WITH THE LAND SURVEYORS' ACT ON NOVEMBER 9, 2011

Signed Gerald Joseph Tibbedeaux P.L.S. 6051
Gerald Joseph Tibbedeaux



COUNTY SURVEYOR'S STATEMENT

THIS CORNER RECORD WAS RECEIVED December 6, 2011
AND EXAMINED AND FILED December 15, 2011

Signed R Tom Hunter R.C.E. 30515

R. Tom Hunter, Plumas County Surveyor
License Expires 03/31/12

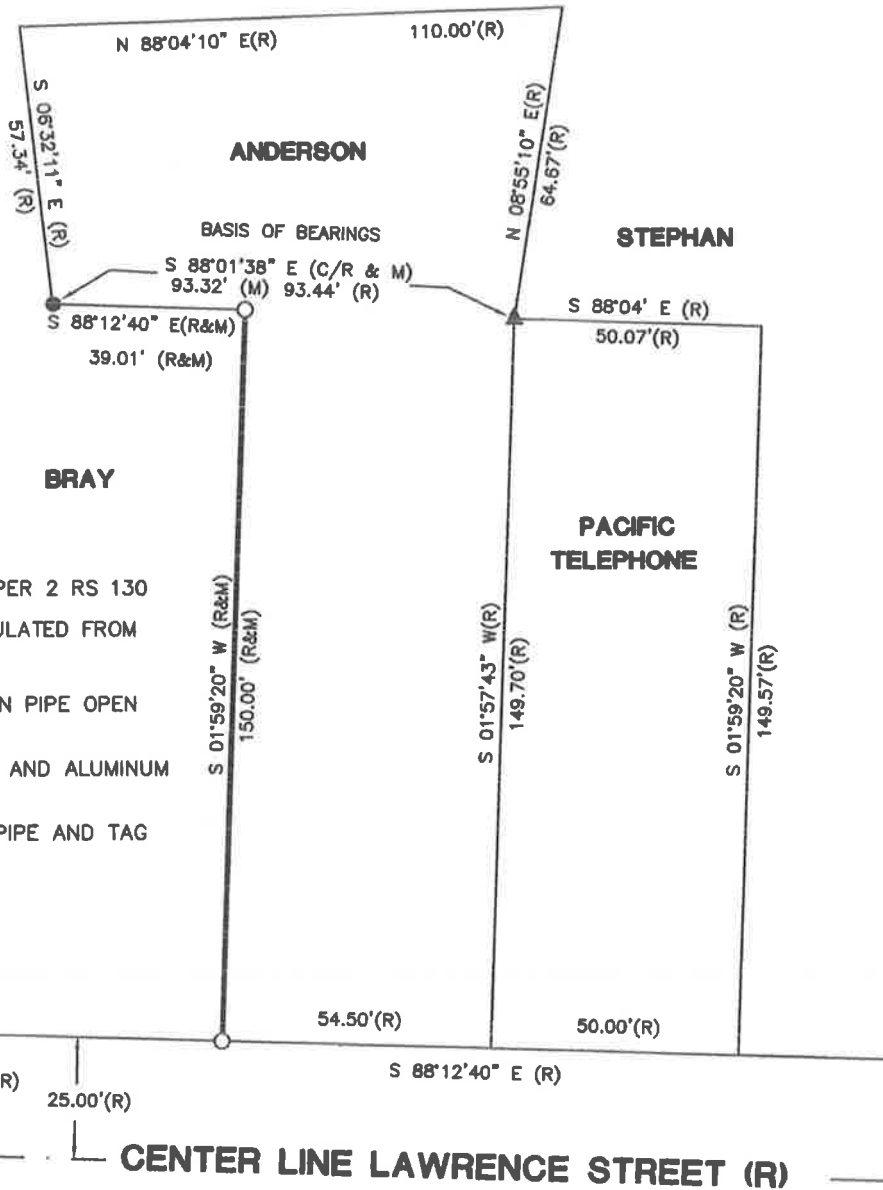


County Surveyor's Comment



1 INCH = 40 FEET

BASIS OF BEARINGS
 THE BEARING OF S 88°01'38" E, CALCULATED FROM INFORMATION SHOWN
 IN BOOK 2 OF RECORDS OF SURVEYS AT PAGE 130, BETWEEN THE RECOVERED
 MONUMENTS SHOWN HEREON IS THE BASIS OF BEARINGS SHOWN ON THIS
 SKETCH.



LEGEND

(R) RECORD INFORMATION PER 2 RS 130

(C/R) INFORMATION CALCULATED FROM
 2 RS 130

- ▲ FOUND 3/4 INCH IRON PIPE OPEN
 SET TAG PLS 6051
- SET 1/2 INCH REBAR AND ALUMINUM
 CAP PLS 6051
- FOUND 1 INCH IRON PIPE AND TAG
 RCE 11173

SKETCH OF MONUMENT REPLACEMENT

FOR
 RICHARD ECK
 MONUMENTS COMMON TO ANDERSON & BRAY
 AS SHOWN IN BOOK 2 OF RECORDS OF SURVEYS, PAGE 130
 WITHIN
 QUINCY PLUMAS COUNTY CALIFORNIA

Tibbeteaux Surveying
 P.O. Box 1960
 Portola, CA 96122
 (530) 832-5772

2011-08

SCALE 1 INCH = 40 FEET NOVEMBER 2011