

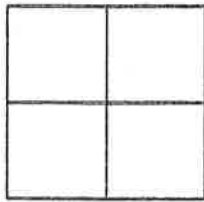
CORNER RECORD

Document No. per 395

Sec. 24, T. 22 N, R. 12 E , M.D.M.

County of Plumas, California

Brief Legal Description A Portion of Parcel 2, 8 PM 68



CORNER TYPE

COORDINATES (Optional)

Government Corner  Control   
Meander  Property   
Rancho  Other   
Date of Survey April 6, 2012

N. \_\_\_\_\_  
E. \_\_\_\_\_  
Zone \_\_\_\_\_ Datum \_\_\_\_\_  
Elev. \_\_\_\_\_

Corner-- Left as found  Found and tagged  Established  Reestablished  Rebuilt

Identification and type of corner found: Evidence used to identify or procedure used to establish or reestablish the corner:  
Found corners shown hereon per 8 PM 68 in good condition per attached sketch.

A description of the physical condition of the monument as found and as set or reset:  
Reset angle point of West line of Swallow Dr., 5/8" rebar with Aluminum Cap, LS 8463 in record position shown per 8 PM 68 as shown on attached sketch.

SURVEYOR'S STATEMENT

This Corner Record was prepared by me or under my direction in conformance with the Land Surveyors' Act on April 6, 2012.

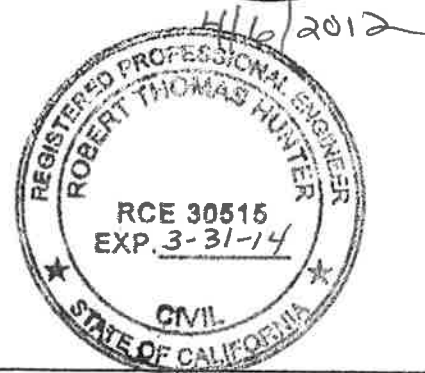
Signed Steven A. Alfred L.S. 8463  
Steven A. Alfred



COUNTY SURVEYOR'S STATEMENT

This Corner Record was received July 5 2012 and examined and filed July 14 2012.

Signed R. Tom Hunter Title Plumas Co. Surveyor



County Surveyor's Comment \_\_\_\_\_  
\_\_\_\_\_  
\_\_\_\_\_

Basis of Bearings

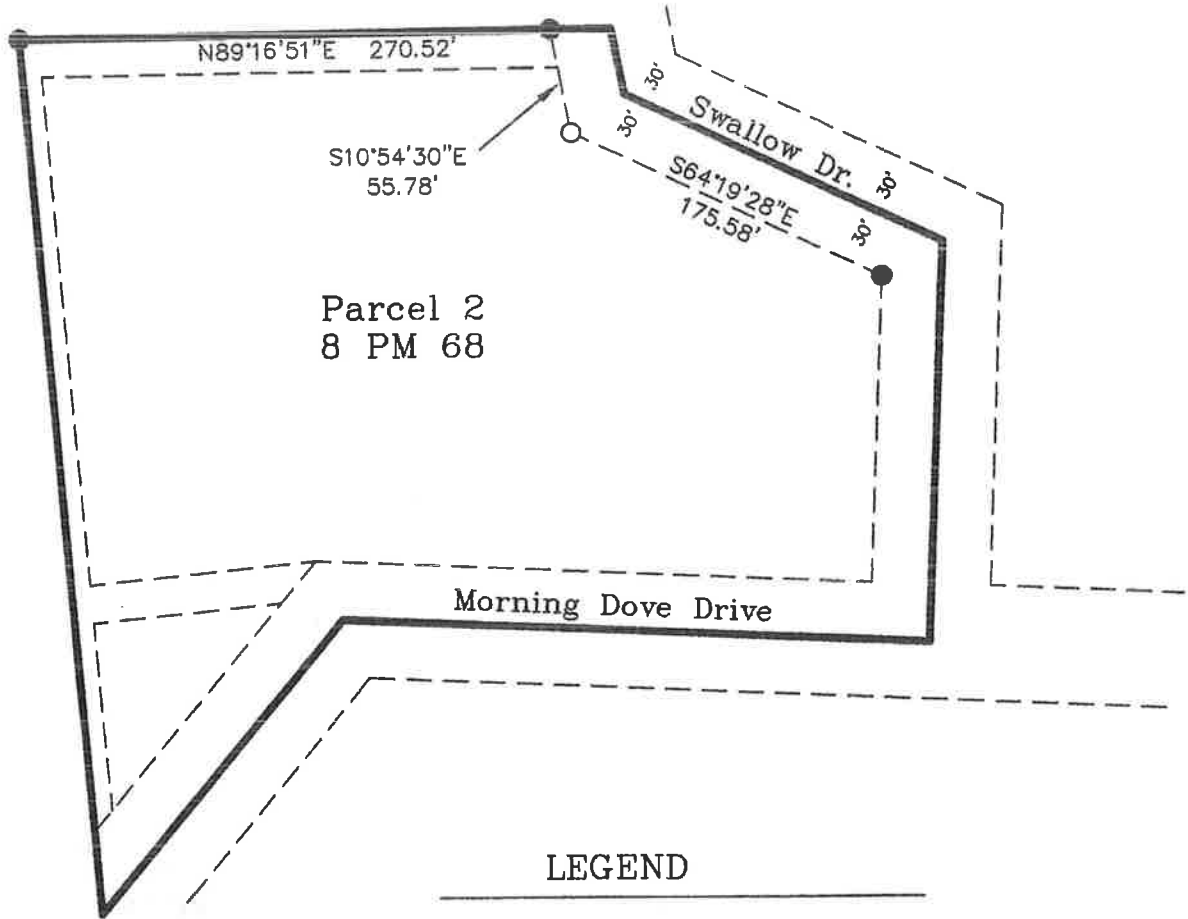
The Basis of Bearings of this Corner Record is the North Line of Parcel 2, between found monuments, shown in Book 8 of Parcel Maps at Page 68, Plumas County records, as being N89°16'51"E.

Note:

Bearings and Distances shown hereon are Record and Measured per 8 PM 68.



1" = 100'



LEGEND

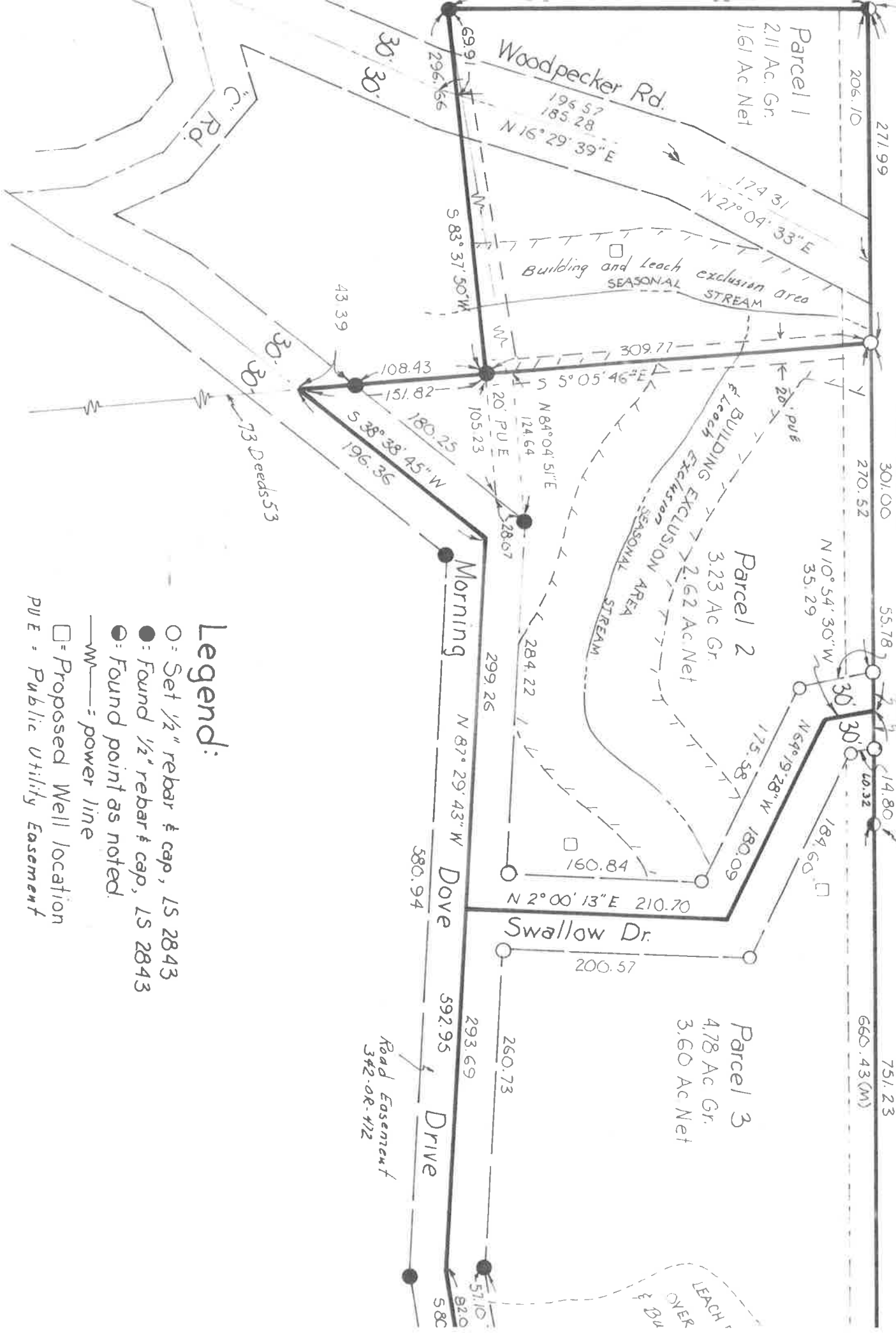
- FOUND 1/2" Rebar with Aluminum Cap LS 2843
- SET 5/8" Rebar with Aluminum Cap LS 8463

LS 2846

# Basis Of Bearings

1. P. W. of Line  
Pd. 3/4 ft North of Line  
1.85

1324.22  
751.23



## Legend:

- = Set 1/2" rebar & cap, LS 2843
- = Found 1/2" rebar & cap, LS 2843
- ⊙ = Found point as noted.
- W— = power line
- = Proposed Well location
- PU E = Public Utility Easement

## Notes:

Road Easement  
342.08-112

LEACH OVER  
& 20'