

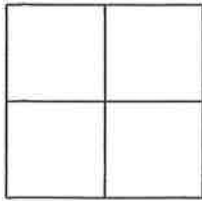
CORNER RECORD

Document Number 396

Portion NE 1/4 Sec. 12 T. 23 N. R. 13 E., M.D.M.

County of Plumas, California

Brief Legal Description Portion of the Northerly line of Grizzly Creek Retreat, 3 M 84



CORNER TYPE

Government Corner Control
Meander Property
Rancho Other
Date of Survey 9-27-11

COORDINATES (Optional)

N. _____
E. _____
Zone _____ NAD27 NAD83
NAD83 Epoch _____
Elev. _____
Vert. Datum: NAD27 NAD83
Meas. Units Metric Imperial

Corner- Left as found Found and tagged Established Reestablished Rebuilt

Identification and type of corner found: Evidence used to identify or procedure used to establish or reestablish the corner:

Found 1/2" I.P.'s tagged LS 2702 as shown on 3 M 84, found 5/8" rebar with Aluminum Cap stamped LS 5620 per CR _____, also found 1/2" rebar with Aluminum Cap stamped LS 2843 per 8 PM 18 as shown on attached sketch.

A description of the physical condition of the monument as found and as set or reset: _____

Slope is steep so set 5/8" rebar with Aluminum cap stamped LS 5620 as reference point on line as shown on attached sketch.

SURVEYOR'S STATEMENT

This Corner Record was prepared by me or under my direction in conformance with the Land Surveyors' Act on September 26, 2011.

Signed John L. Owen L.S. 5620
John L. Owen



3-27-12

COUNTY SURVEYOR'S STATEMENT

This Corner Record was received July 5 2012 and examined and filed July 14 2012.

Signed R Tom Hunter P.L.S. or R.C.E. No. 30515
Title Plumas Co. Surveyor
County Surveyor's Comment _____



Note: Bearings and distances shown are computed or shown record distances from 8 PM 18 or 3 M 84

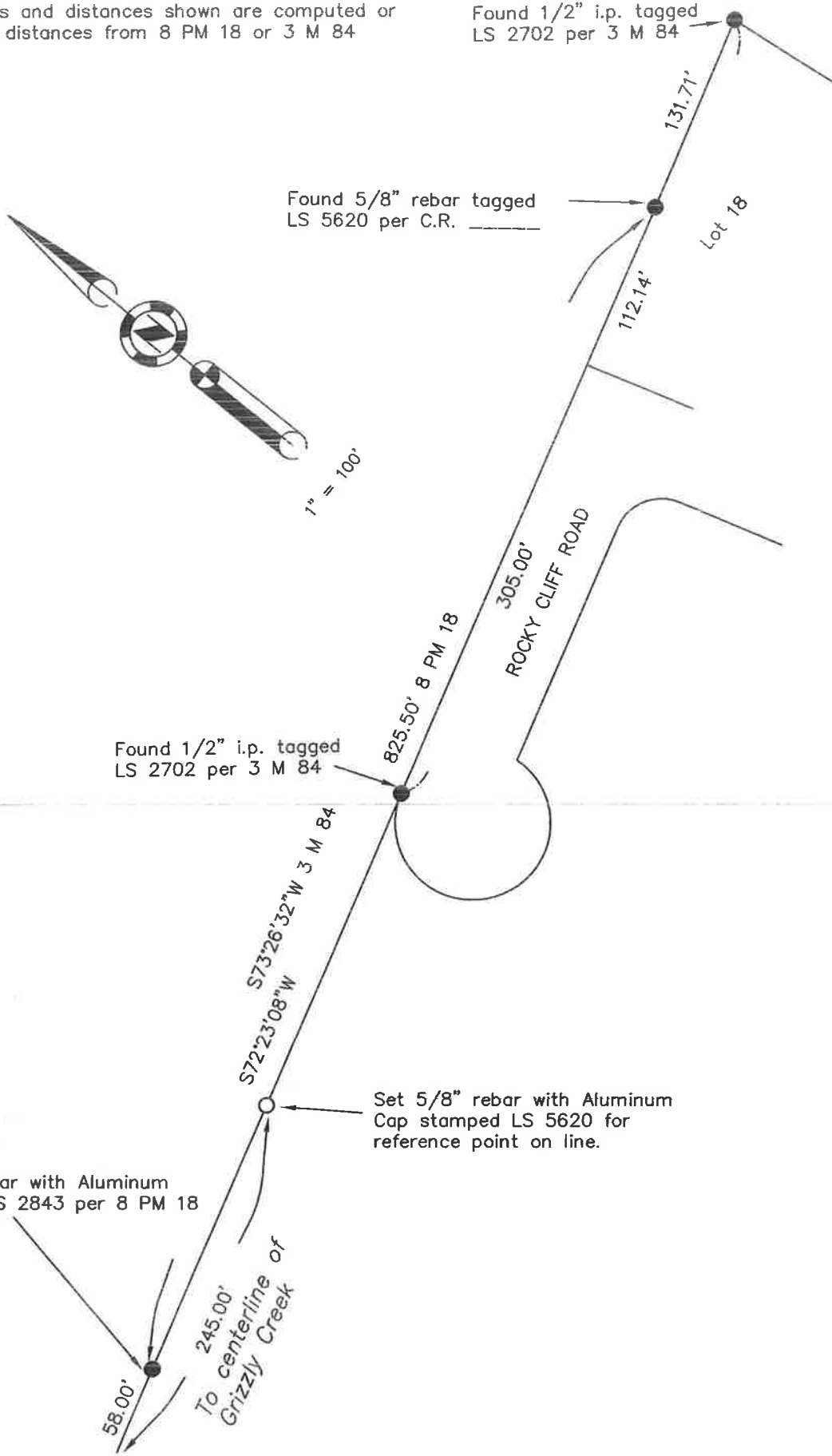
Found 1/2" i.p. tagged LS 2702 per 3 M 84

Found 5/8" rebar tagged LS 5620 per C.R.

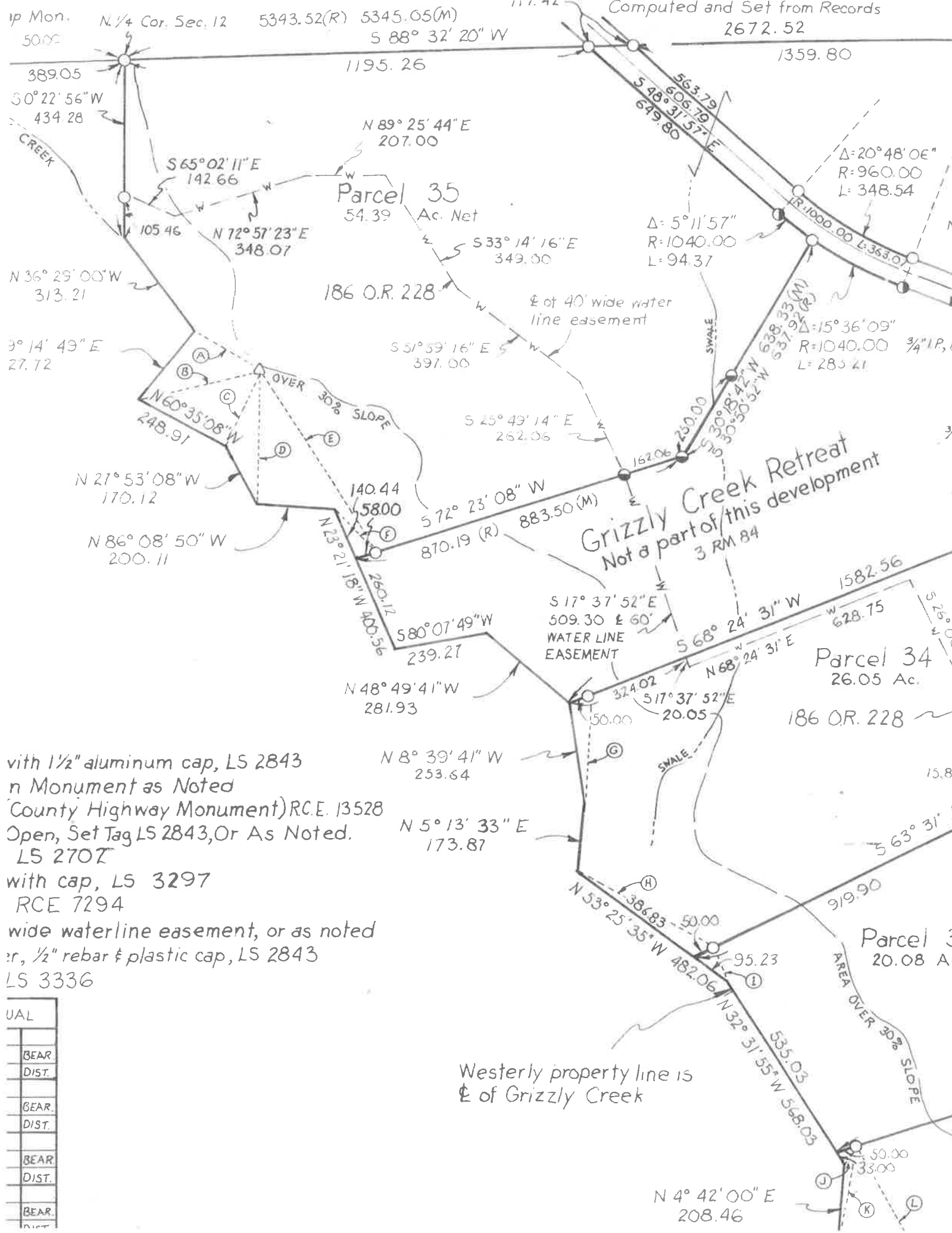
Found 1/2" i.p. tagged LS 2702 per 3 M 84

Set 5/8" rebar with Aluminum Cap stamped LS 5620 for reference point on line.

Found 1/2" rebar with Aluminum cap stamped LS 2843 per 8 PM 18



11040



with 1/2" aluminum cap, LS 2843
 n Monument as Noted
 County Highway Monument) R.C.E. 13528
 Open, Set Tag LS 2843, Or As Noted.
 LS 2707
 with cap, LS 3297
 R.C.E. 7294
 wide waterline easement, or as noted
 er, 1/2" rebar & plastic cap, LS 2843
 LS 3336

UAL
BEAR
DIST.
BEAR
DIST.
BEAR
DIST.
BEAR
DIST.

Westerly property line is 1/2 of Grizzly Creek