

**CORNER RECORD**

Document Number 397

Nearest Town Blairsden  
County of Plumas California

Reset the southeast corner, the northwest corner and the point of curvature monuments on lot 17, of Plumas Eureka Estates, Unit 7, Phase 2, Book 6 of Subdivision Maps, Pages 117 to 119. Within the northeast ¼ of Section 8, Township 22 North, Range 12 East, Mount Diablo Meridian.

**CORNER TYPE**

Property corners  
Date of Survey May 9, 2012

Corner Left as found  Found and tagged  Established   
Reestablished  Rebuilt

**Identification and type of corner found: Evidence used to identify or procedure used to establish or reestablish the corner:**

See Sketch – Page 2

**A description of the physical condition of the monument as found and as set or reset:**

See Sketch – Page 2

**SURVEYOR'S STATEMENT**

THIS CORNER RECORD WAS PREPARED BY ME OR UNDER MY DIRECTION IN CONFORMANCE WITH THE LAND SURVEYORS' ACT ON May 9, 2012

Signed Gerald Joseph Tibbedeaux P.L.S. 6051  
Gerald Joseph Tibbedeaux



**COUNTY SURVEYOR'S STATEMENT**

THIS CORNER RECORD WAS RECEIVED July 5, 2012  
AND EXAMINED AND FILED July 14, 2012

Signed R Tom Hunter R.C.E. 30515  
R. Tom Hunter, Plumas County Surveyor  
License Expires 03/31/14



**County Surveyor's Comment**

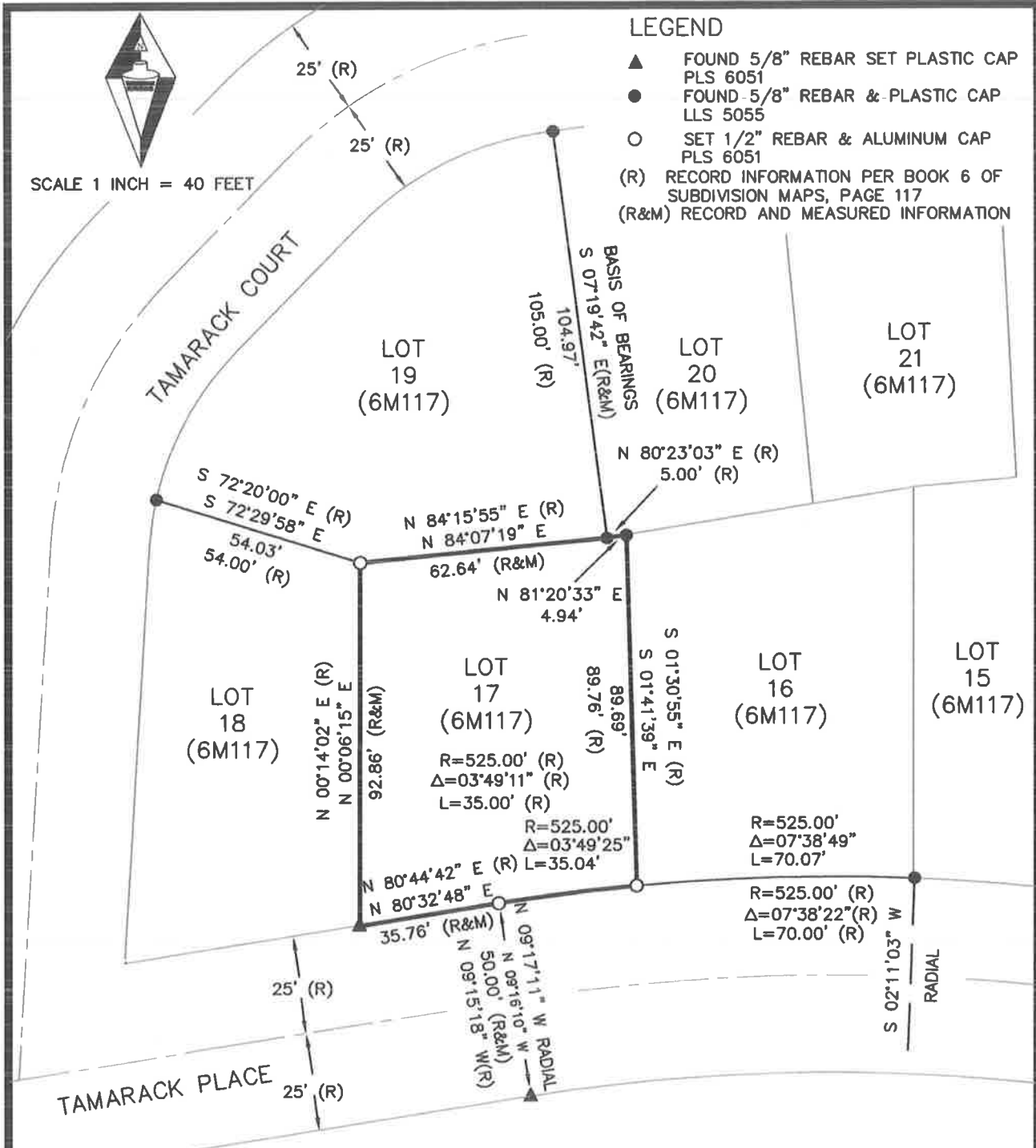
\_\_\_\_\_  
\_\_\_\_\_  
\_\_\_\_\_



SCALE 1 INCH = 40 FEET

### LEGEND

- ▲ FOUND 5/8" REBAR SET PLASTIC CAP PLS 6051
- FOUND 5/8" REBAR & PLASTIC CAP LLS 5055
- SET 1/2" REBAR & ALUMINUM CAP PLS 6051
- (R) RECORD INFORMATION PER BOOK 6 OF SUBDIVISION MAPS, PAGE 117
- (R&M) RECORD AND MEASURED INFORMATION



### BASIS OF BEARINGS

THE BEARING OF S 07°19'42" E FOR THE LINE COMMON TO LOTS 19 AND 20, BOOK 6 OF SUBDIVISION MAPS AT PAGE 117, IS THE BASIS OF BEARINGS SHOWN ON THIS SKETCH.

### SKETCH OF MONUMENT REPLACEMENT FOR

LOIS J. GRAHAM

LOT 17, BOOK 6 OF SUBDIVISION MAPS, PAGES 117 TO 119  
WITHIN THE NE 1/4 SECTION 8, T. 22N., R. 12E., MDM  
PLUMAS COUNTY CALIFORNIA  
SCALE 1 INCH = 40 FEET MAY, 2012

Tibbeteaux Surveying  
P.O. Box 1960  
Portola, Ca 96122

(530) 832-5772

Job 2012-04