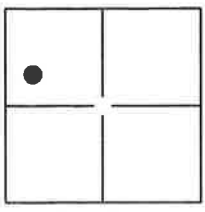


CORNER RECORD

Document Number 399
County of PLUMAS, California

City of PORTOLA

Brief Legal Description LOT 16, RIDGEWOOD SUBDIVISION, UNIT NO. 1, 5 M 45



CORNER TYPE

Government Corner Control
Meander Property
Rancho Other

COORDINATES(Optional)

N. _____
E. _____
Zone _____ NAD27 NAD83
NAD83 Epoch _____
Elev. _____
Vert. Datum: NGVD29 NADV88
Meas. Units: Metric Imperial

Date of Survey DECEMBER, 2011

SECTION 1
T.22N., R.13E., M.D.M.

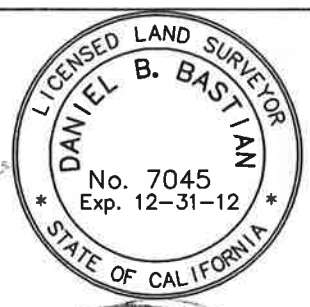
Corner— Left as found Found and tagged Established Reestablished Rebuilt

Identification and type of corner found: Evidence used to identify or procedure used to establish or reestablish the corner:
FOUND PROPERTY CORNERS, AS SHOWN ON PAGE 2, IN RECORD POSITION PER 5 M 45.
REESTABLISHED THE RECORD POSITION OF THE MISSING CORNER OF LOT 16 USING RECORD
DATA TO CALCULATE IT'S RECORD POSITION.

A description of the physical condition of the monument as found and as set or reset: _____
THE NORTHEASTERLY CORNER OF THE INTERSECTION RETURN OF LOT 16 NOT FOUND;
SET AS SHOWN ON PAGE 2.

SURVEYOR'S STATEMENT

This Corner Record was prepared by me or under my direction in conformance with
the Land Surveyor's Act on December 26, 2011.
Signed [Signature] P.L.S. or R.C.E. No.: 7045



COUNTY SURVEYOR'S STATEMENT

This Corner Record was received Jan 15, 2012 and examined
and filed January 20, 2012.
Signed [Signature] P.L.S. or R.C.E. No.: 30515
Title Co. Surveyor
County Surveyor's Comment _____

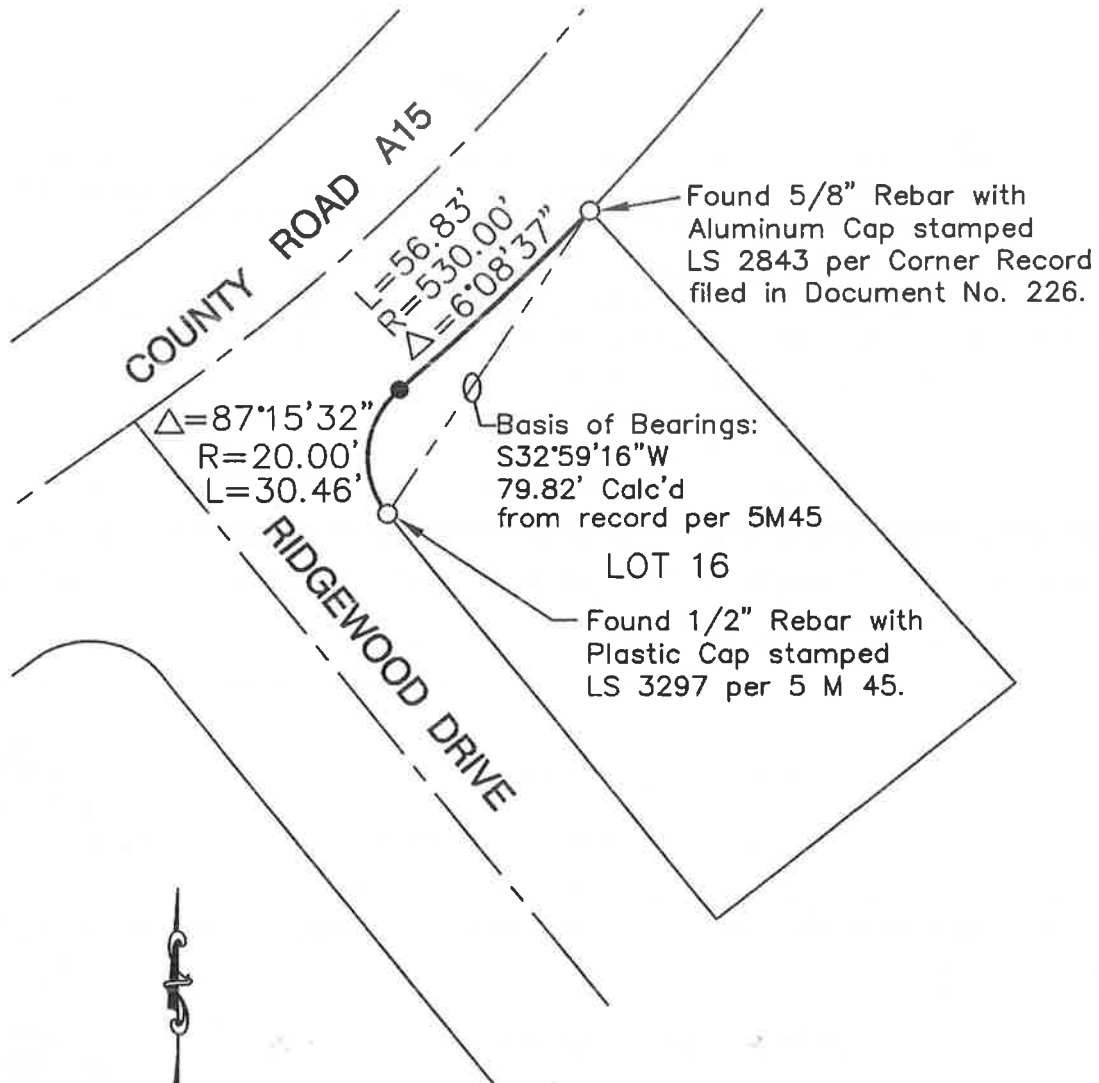


LEGEND

○ Found corner as described.

● Set 1/2" Rebar with Aluminum Cap stamped LS 7045.

NOTE: All bearings and distances shown are record per Book 5 of Maps at Page 45.



SCALE: 1"=40'

LOT 16, 5 M 45
RIDGEWOOD SUBDIVISION
UNIT NO. 1
LOCATED IN THE NW 1/4 OF SECTION 1
T. 22 N., R. 13 E., M.D.M.
WITHIN THE CITY OF PORTOLA
PLUMAS COUNTY, CALIFORNIA