

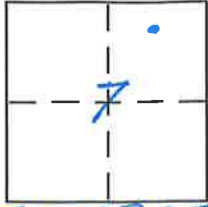
CORNER RECORD

Document Number 400

Town of Chester
City of Chester

County of Plumas, California

Brief Legal Description Lot 10, Block 3, Riverwood Addition R/M 1-11



T2B NR 7E

CORNER TYPE

Government Corner Control
Meander Property
Rancho Other
Date of Survey Dec. 9, 2011

COORDINATES (Optional)

N. _____
E. _____
Zone _____ NAD27 NAD83
NAD83 Epoch _____
Elev. _____
Vert. Datum: NGVD29 NAVD88
Meas. Units: Metric Imperial

Corner - Left as found Found and tagged Established Reestablished Rebuilt

Identification and type of corner found: Evidence used to identify or procedure used to establish or reestablish the corner:

See Sketch

A description of the physical condition of the monument as found and as set or reset:

See Sketch

SURVEYOR'S STATEMENT

This Corner Record was prepared by me or under my direction in conformance with the Land Surveyor's Act on April 25, 2012

Signed Vernon H. Templeton P.L.S. or R.C.E. No. 4647

COUNTY SURVEYOR'S STATEMENT

This Corner Record was received May 5, 2012

and examined and filed May 8, 2012

Signed R. Tom Hunter P.L.S. or R.C.E. No. 30515

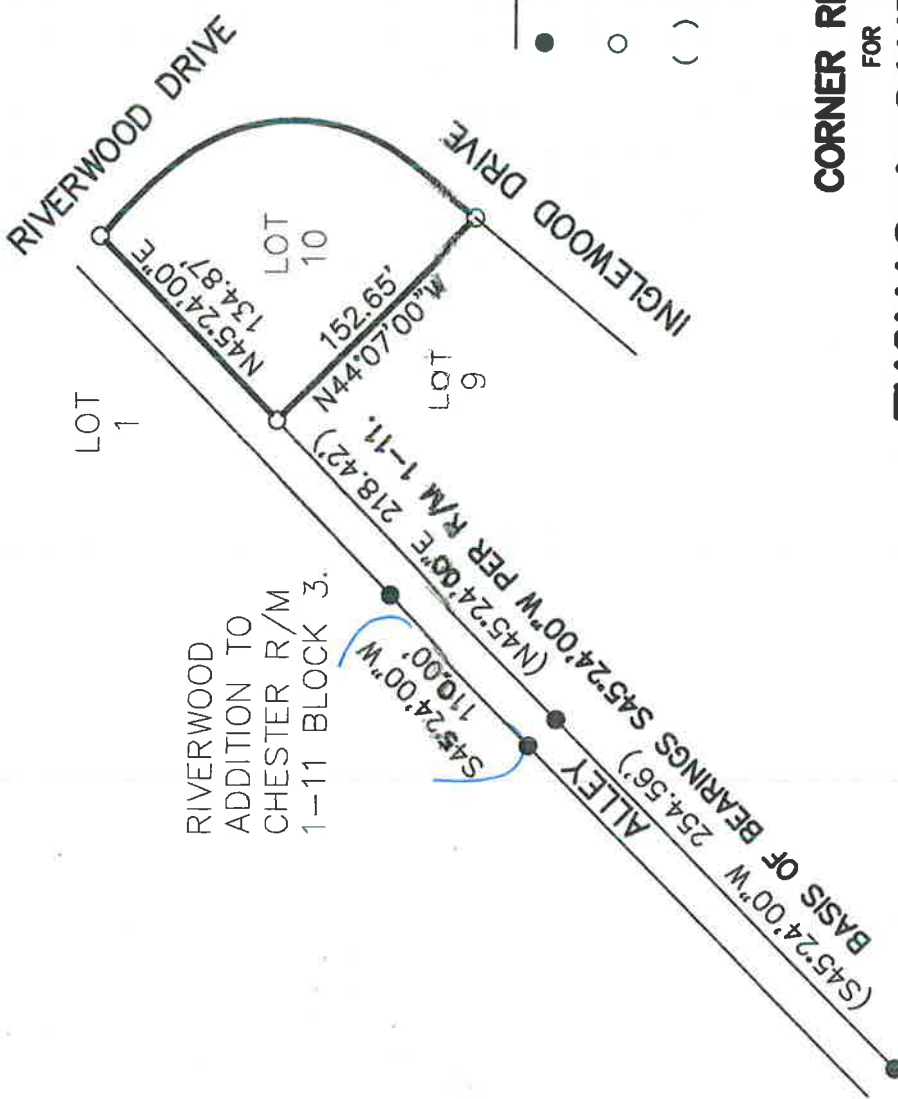
Title Co. Surveyor

County Surveyor's Comment _____





SCALE: 1" = 100'



RIVERWOOD ADDITION TO CHESTER R/M 1-11 BLOCK 3.

LEGEND

- FOUND STEEL PIN TAGGED RCE 292 PER R/M 1-11.
- SET 1/2" REBAR WITH PLASTIC CAP TAGGED LS 4647.
- () RECORD PER RIVERWOOD ADDITION TO CHESTER R/M 1-11. *Measured.*

CORNER RECORD
FOR
THOMAS & SANDRA ROBBINS

IN SECTION 7, T28N, R7E MDB&M
RIVERWOOD ADDITION TO CHESTER
R/M 1-11, BLOCK 3, LOT 10
PLUMAS COUNTY, CALIFORNIA

SCALE: 1" = 100'



NST Engineering, Inc.
1406 Riverwide Drive
Susanville, CA 96150
(530) 257-5173

NOTE: THE CURVES ALONG THE EASTERLY SIDE OF LOT 10 DO NOT MATHEMATICALLY CLOSE, NO ATTEMPT WAS MADE TO RESOLVE THIS BOUNDARY.