

CORNER RECORD

Document Number 401

Nearest Town Blairsden
County of Plumas California

Reset the southwest corner of Parcel 2, Book 4 of Records of Surveys, Page 54 as shown in Book 7 of Records of Surveys, Page 64, Plumas County Records, and set line points as shown. Within the northeast ¼ of Section 12, Township 22 North, Range 12 East, Mount Diablo Meridian.

CORNER TYPE

Property corners and line points
Date of Survey August 4, 2012

Corner Left as found Found and tagged Established
Reestablished Rebuilt

Identification and type of corner found: Evidence used to identify or procedure used to establish or reestablish the corner:

See Sketch – Page 2

A description of the physical condition of the monument as found and as set or reset:

See Sketch – Page 2

SURVEYOR'S STATEMENT

THIS CORNER RECORD WAS PREPARED BY ME OR UNDER MY DIRECTION IN CONFORMANCE WITH THE LAND SURVEYORS' ACT ON August 4, 2012.

Signed Gerald Joseph Tibbedeaux P.L.S. 6051
Gerald Joseph Tibbedeaux



COUNTY SURVEYOR'S STATEMENT

THIS CORNER RECORD WAS RECEIVED September 10, 2012
AND EXAMINED AND FILED September 20, 2012

Signed R. Tom Hunter R.C.E. 30515
R. Tom Hunter, Plumas County Surveyor
License Expires 03/31/14

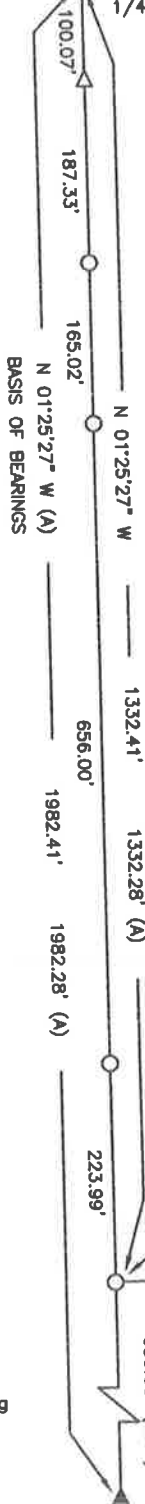


County Surveyor's Comment

SECTION 1

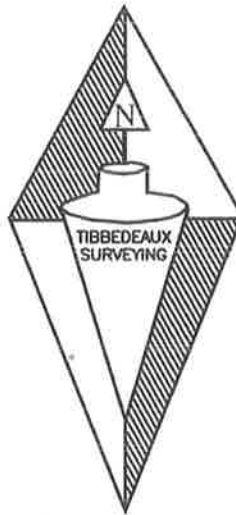
SECTION 12

N 88°39'23" E (A) 1355.97' (A)
 1/4 COR. SEC. 12



LEGEND

- ▲ FOUND 1/2 INCH REBAR, SET PLASTIC CAP, PLS 6051 (A)
- SET 1/2 INCH REBAR & ALUMINUM CAP, PLS 6051
- △ SET 5/8 INCH REBAR & PLASTIC CAP PLS 6051
- ⊕ FOUND USDA DISK MARKED FOR 1/4 COR. SECTION 1 & 12 - PLS 5623 AS DESCRIBED BOOK 11 OF RECORDS OF SURVEYS, PAGE 118
- (A) RECORD INFORMATION PER BOOK 7 OF RECORDS OF SURVEYS, PAGE 64



BASIS OF BEARINGS

THE NORTH-SOUTH CENTERLINE OF SECTION 12, SHOWN AS N 01°25'27" W, ON BOOK 7 OF RECORDS OF SURVEYS AT PAGE 64 IS THE BASIS OF BEARINGS SHOWN ON THIS MAP.

SKETCH OF CORNER REPLACEMENT
 AND LINE MONUMENTS
 FOR
 JAMES DINNEEN

THE SOUTHWEST CORNER OF THE NORTHWEST 1/4 OF THE NORTHEAST 1/4 OF SECTION 12, TOWNSHIP 22 NORTH, RANGE 12 EAST, M.D.M AS SHOWN IN BOOK 7 OF RECORDS OF SURVEYS, PAGE 64

PLUMAS COUNTY CALIFORNIA

AUGUST 2012

SCALE 1 INCH = 200 FEET

Tibbsdeaux Surveying
 P.O. Box 1960
 Portola, CA 96122
 (530) 832-5772

Job #2012-10

PAGE 2 OF 2