

CORNER RECORD

Document Number 402

Sec. 16, T. 22 N, R. 1 E, M.D.M.

County of Plumas, California

Brief Legal Description Community Service District Easement shown on 8 Maps 24, Sheet 4.

	<b>X</b>
Sec. 16	

CORNER TYPE

Government Corner  Control   
 Meander  Property   
 Rancho  Other   
 Date of Survey September 10, 2012

COORDINATES

(Optional)  
 N. \_\_\_\_\_  
 E. \_\_\_\_\_  
 Zone \_\_\_\_\_ Datum \_\_\_\_\_  
 Elev. \_\_\_\_\_

Corner- Left as found  Found and tagged  Established  Reestablished  Rebuilt

Identification and type of corner found: Evidence used to identify or procedure used to establish or reestablish the corner:  
Found corners shown hereon per 9 M 15 in good condition per attached sketch.

A description of the physical condition of the monument as found and as set or reset:  
Reset angle point of West line of C.S.D. Easement, 5/8" rebar with Aluminum Cap, LS 8463  
in record position shown per 9 M 9, Sheet 7 as shown on attached sketch.  
Set Northeast corner of C.S.D. Easement, 5/8" rebar with Aluminum Cap, LS 8463  
in record position shown per 8 M 24, Sheet 4 as shown on attached sketch.

SURVEYOR'S STATEMENT

This Corner Record was prepared by me or under my direction in conformance with the Land Surveyors' Act on September 17, 2012.

Signed Steven A. Alfred L.S. 8463  
Steven A. Alfred



9/17/12

COUNTY SURVEYOR'S STATEMENT

This Corner Record was received November 15, 2012 and  
examined and filed December 7, 2012.

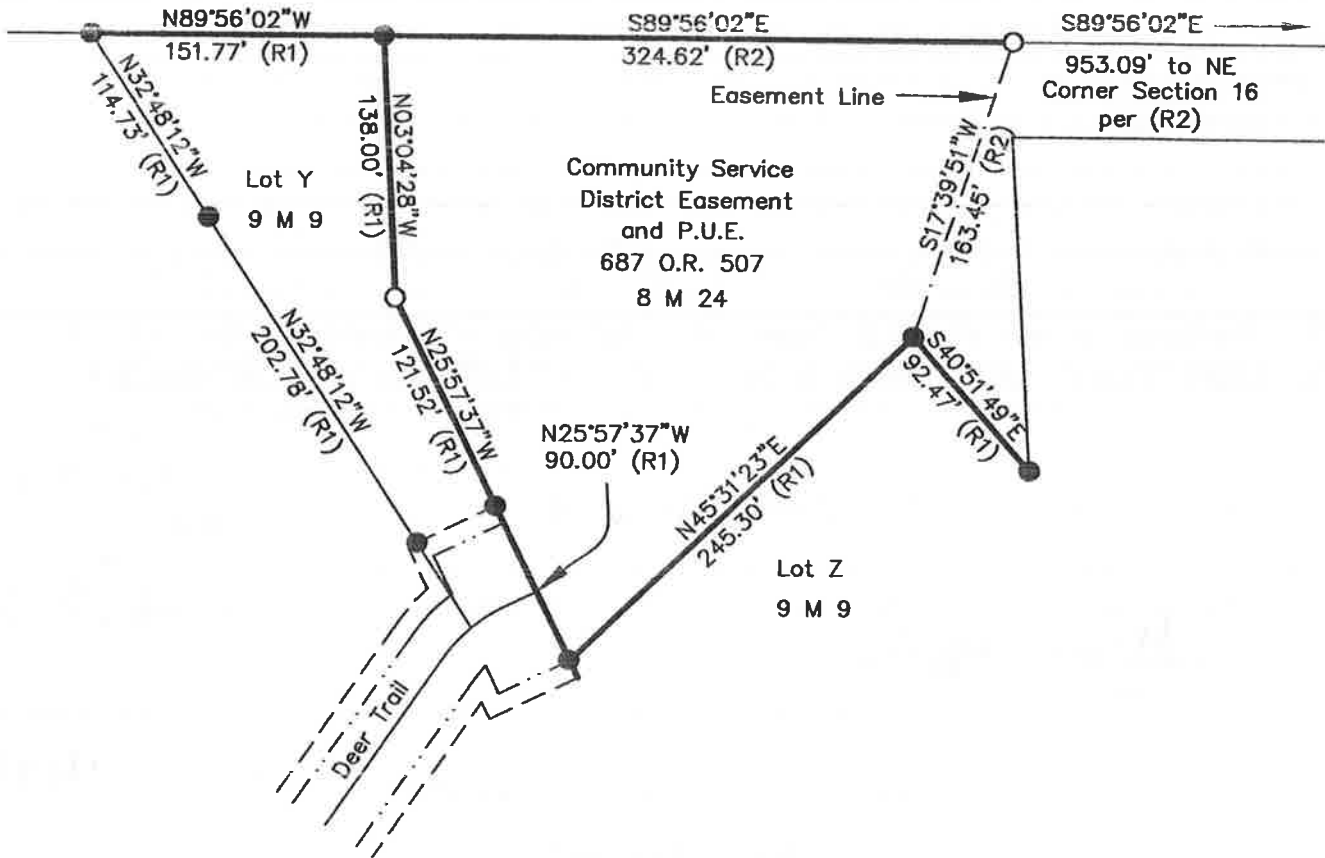
Signed R. Tom Spitzer Title \_\_\_\_\_

County Surveyor's Comment \_\_\_\_\_

Bearings and Distances shown hereon are  
Record and Measured between found monuments  
per the Maps indicated



1" = 100'



## LEGEND

- FOUND 5/8" Rebar with Aluminum Cap LS 2843 per 9 M 9
- SET 5/8" Rebar with Aluminum Cap LS 8463
- (R1) RECORD per 9 M 9
- (R2) RECORD per 8 M 24