

CORNER RECORD

Document Number 403

Nearest Town Quincy
County of Plumas California

Reset the northeast corner of Lot 18, Book 4 of Subdivision Maps, Pages 119 and 120, from recovery notes and control for Book 12 of Records of Surveys, Page 141, after construction. Monument recovered June 6, 2003 during a boundary recovery survey for Lot 8 (4 M 119) (Record of Survey Book 12, Page 141) Within Section 24, Township 24 north, Range 9 east, Mount Diablo Meridian.

CORNER TYPE

Property corners

Date of Survey October 10, 2013

Corner Left as found _ Found and tagged _ Established _ Reset after construction
Reestablished _ Rebuilt _

Identification and type of corner found: Evidence used to identify or procedure used to establish or reestablish the corner:

See Sketch – Page 2

A description of the physical condition of the monument as found and as set or reset:

See Sketch – Page 2

SURVEYOR'S STATEMENT

THIS CORNER RECORD WAS PREPARED BY ME OR UNDER MY DIRECTION IN CONFORMANCE WITH THE LAND SURVEYORS' ACT ON October 10, 2013

Signed Gerald Joseph Tibbedeaux P.L.S. 6051
Gerald Joseph Tibbedeaux



COUNTY SURVEYOR'S STATEMENT

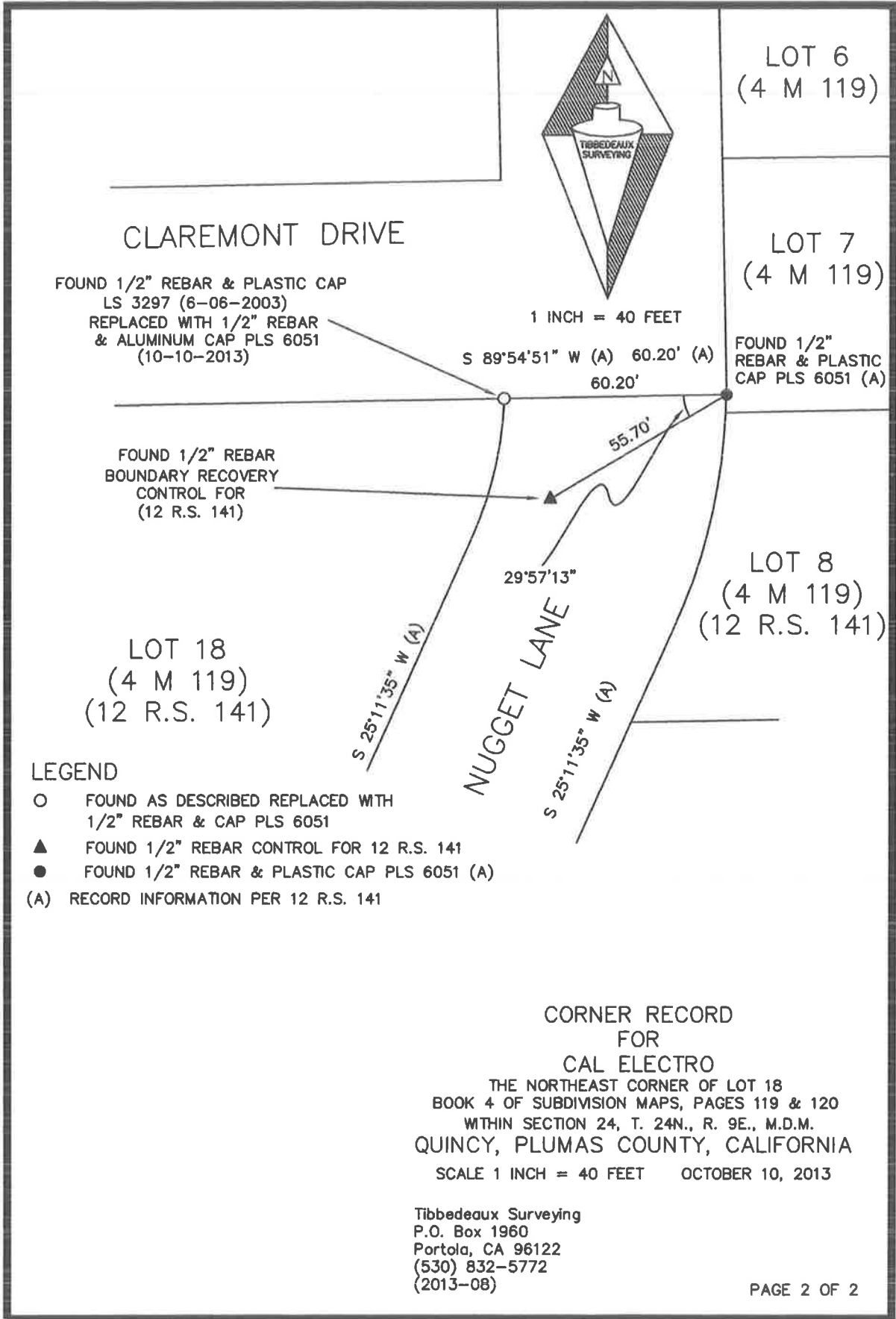
THIS CORNER RECORD WAS RECEIVED November 5, 2013
AND EXAMINED AND FILED November 12, 2013

Signed R. Tom Hunter R.C.E. 30515

R. Tom Hunter, Plumas County Surveyor
License Expires 03/31/14



County Surveyor's Comment



LOT 6
(4 M 119)

LOT 7
(4 M 119)

FOUND 1/2" REBAR & PLASTIC CAP PLS 6051 (A)

LOT 8
(4 M 119)
(12 R.S. 141)

LOT 18
(4 M 119)
(12 R.S. 141)

CLAREMONT DRIVE



1 INCH = 40 FEET

FOUND 1/2" REBAR & PLASTIC CAP
LS 3297 (6-06-2003)
REPLACED WITH 1/2" REBAR
& ALUMINUM CAP PLS 6051
(10-10-2013)

S 89°54'51" W (A) 60.20' (A)
60.20'

FOUND 1/2" REBAR
BOUNDARY RECOVERY
CONTROL FOR
(12 R.S. 141)

29°57'13"

55.70'

S 25°11'35" W (A)

NUGGET LANE

S 25°11'35" W (A)

LEGEND

- FOUND AS DESCRIBED REPLACED WITH 1/2" REBAR & CAP PLS 6051
- ▲ FOUND 1/2" REBAR CONTROL FOR 12 R.S. 141
- FOUND 1/2" REBAR & PLASTIC CAP PLS 6051 (A)
- (A) RECORD INFORMATION PER 12 R.S. 141

CORNER RECORD
FOR
CAL ELECTRO

THE NORTHEAST CORNER OF LOT 18
BOOK 4 OF SUBDIVISION MAPS, PAGES 119 & 120
WITHIN SECTION 24, T. 24N., R. 9E., M.D.M.
QUINCY, PLUMAS COUNTY, CALIFORNIA
SCALE 1 INCH = 40 FEET OCTOBER 10, 2013

Tibbedeaux Surveying
P.O. Box 1960
Portola, CA 96122
(530) 832-5772
(2013-08)