

CORNER RECORD

Document Number 404

Nearest Town Quincy
County of Plumas California

Reset the southwest and southeast corners of Parcel A, Book 5 of Parcel Maps, Page 78, as shown in Book 10 of Parcel Maps, Page 90, after construction. Monuments recovered July 21, 2012 during a topographic survey for Quincy Services District. Within Section 14, Township 24 north, Range 9 east, Mount Diablo Meridian.

CORNER TYPE

Property corners

Date of Survey October 10, 2013

Corner Left as found _ Found and tagged _ Established _ Reset after construction
Reestablished _ Rebuilt _

Identification and type of corner found: Evidence used to identify or procedure used to establish or reestablish the corner:

See Sketch – Page 2

A description of the physical condition of the monument as found and as set or reset:

See Sketch – Page 2

SURVEYOR'S STATEMENT

THIS CORNER RECORD WAS PREPARED BY ME OR UNDER MY DIRECTION IN CONFORMANCE WITH THE LAND SURVEYORS' ACT ON October 10, 2013

Signed Gerald Joseph Tibbedeaux P.L.S. 6051
Gerald Joseph Tibbedeaux



COUNTY SURVEYOR'S STATEMENT

THIS CORNER RECORD WAS RECEIVED November 5, 2013
AND EXAMINED AND FILED November 12, 2013

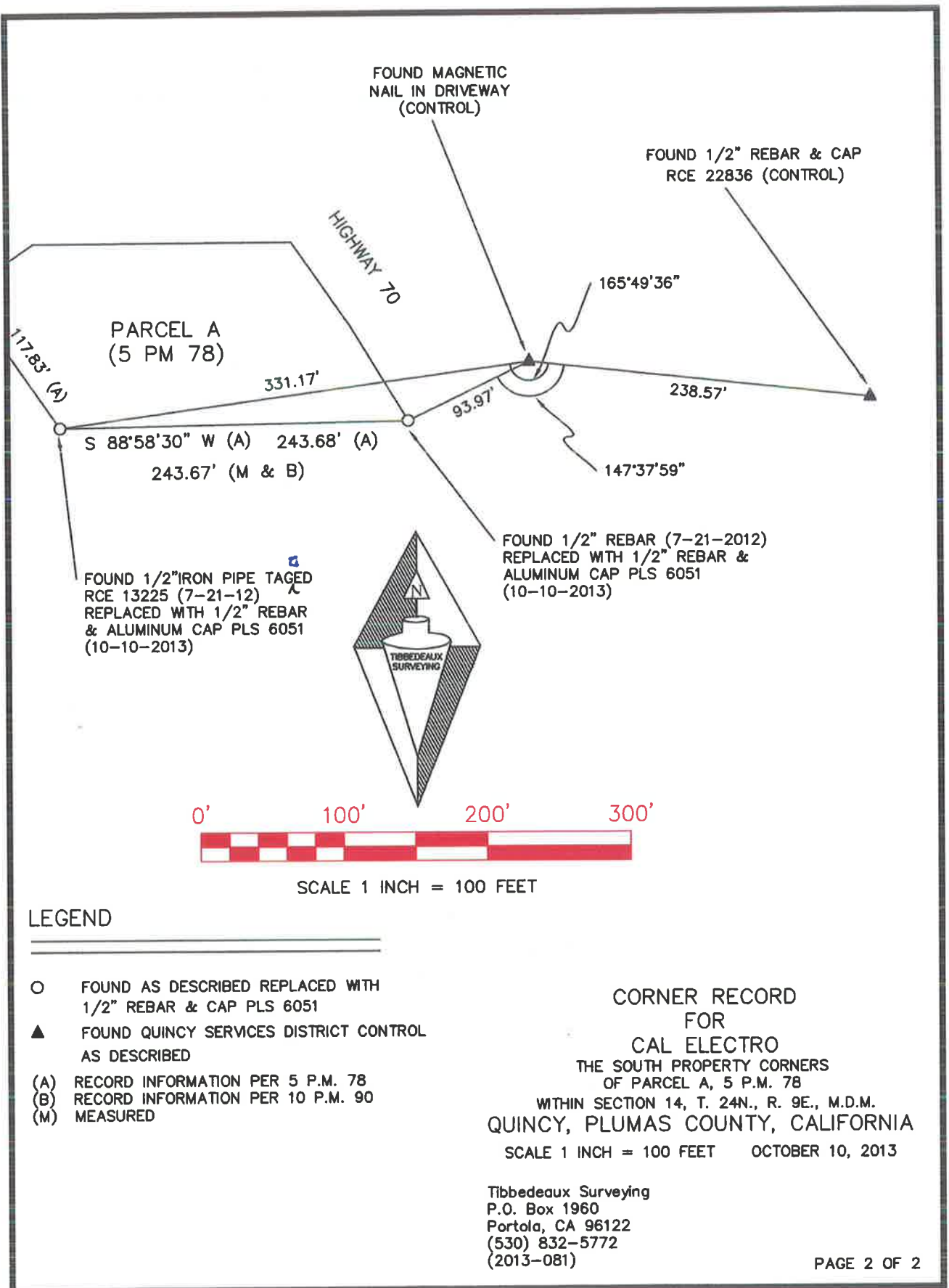
Signed R. Tom Hunter R.C.E. 30515

R. Tom Hunter, Plumas County Surveyor

License Expires 03/31/14



County Surveyor's Comment



FOUND MAGNETIC
NAIL IN DRIVEWAY
(CONTROL)

FOUND 1/2" REBAR & CAP
RCE 22836 (CONTROL)

PARCEL A
(5 PM 78)

HIGHWAY 70

117.83° (A)

331.17'

165°49'36"

S 88°58'30" W (A) 243.68' (A)
243.67' (M & B)

93.97'

238.57'

147°37'59"

FOUND 1/2" IRON PIPE TAGED
RCE 13225 (7-21-12)
REPLACED WITH 1/2" REBAR
& ALUMINUM CAP PLS 6051
(10-10-2013)

FOUND 1/2" REBAR (7-21-2012)
REPLACED WITH 1/2" REBAR &
ALUMINUM CAP PLS 6051
(10-10-2013)



SCALE 1 INCH = 100 FEET

LEGEND

- FOUND AS DESCRIBED REPLACED WITH 1/2" REBAR & CAP PLS 6051
- ▲ FOUND QUINCY SERVICES DISTRICT CONTROL AS DESCRIBED
- (A) RECORD INFORMATION PER 5 P.M. 78
- (B) RECORD INFORMATION PER 10 P.M. 90
- (M) MEASURED

CORNER RECORD
FOR
CAL ELECTRO
THE SOUTH PROPERTY CORNERS
OF PARCEL A, 5 P.M. 78
WITHIN SECTION 14, T. 24N., R. 9E., M.D.M.
QUINCY, PLUMAS COUNTY, CALIFORNIA
SCALE 1 INCH = 100 FEET OCTOBER 10, 2013

Tibbedeaux Surveying
P.O. Box 1960
Portola, CA 96122
(530) 832-5772
(2013-081)