

# CORNER RECORD

Document Number 407

Nearest Town Canyon Dam  
County of Plumas County

Set intersection of centerline 20 foot wide access easement on north and south property lines of Lot 4, Book 3 of Subdivision Maps, page 91 (Lake Almanor Country Club Unit No. 13)

### CORNER TYPE

Easement intersect Property line  
Date of Survey July 8, 2014

Corner Left as found \_ Found and tagged \_ Established  Reset after construction \_  
Reestablished \_ Rebuilt \_

Identification and type of corner found: Evidence used to identify or procedure used to establish or reestablish the corner:

See Sketch – Page 2

A description of the physical condition of the monument as found and as set or reset:

See Sketch – Page 2

### SURVEYOR'S STATEMENT

THIS CORNER RECORD WAS PREPARED BY ME OR UNDER MY DIRECTION IN CONFORMANCE WITH THE LAND SURVEYORS' ACT ON July 8, 2014.

Signed Gerald Joseph Tibbedeaux P.L.S. 6051  
Gerald Joseph Tibbedeaux



### COUNTY SURVEYOR'S STATEMENT

THIS CORNER RECORD WAS RECEIVED August 12, 2014  
AND EXAMINED AND FILED August 20, 2014

Signed R. Tom Shurts  
Plumas County Surveyor  
License Expires



### County Surveyor's Comment

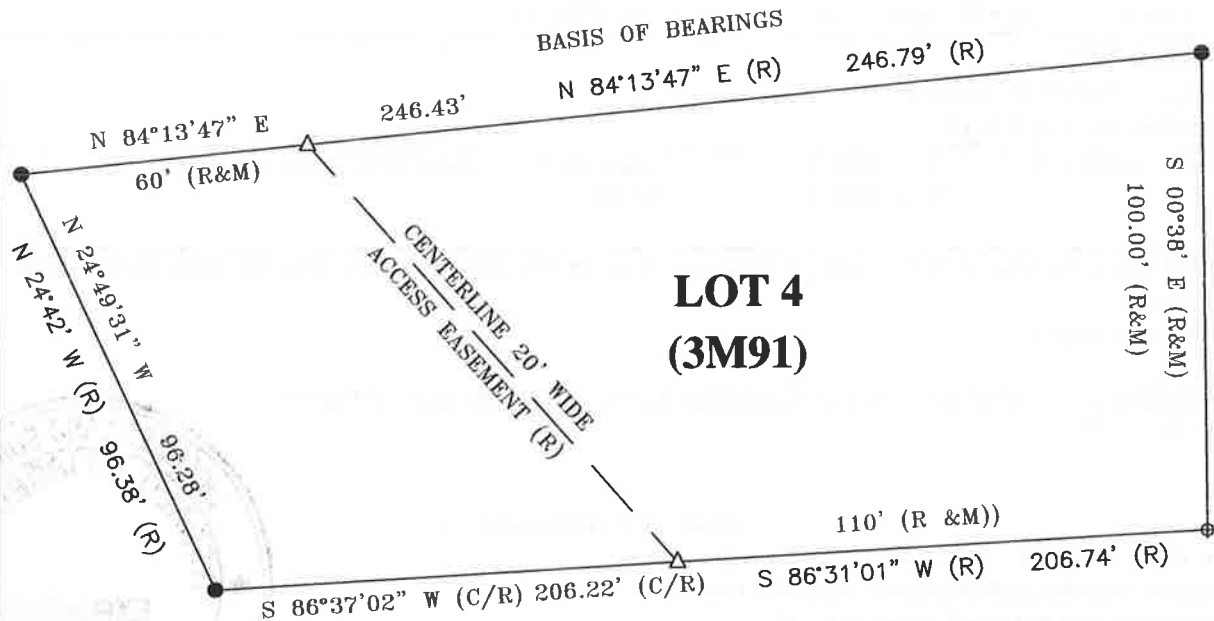
---

---

---

---

# LOT 3

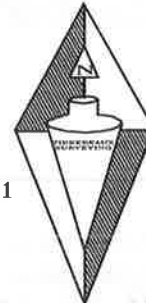


# LOT 4 (3M91)

# LOT 5

### LEGEND

- ◆ NOTHING SET, LOCATION FROM RECORD INDICATED
- △ SET NAIL IN ASPHALT
- FOUND 3/4" IRON PIPE AND TAG LS 3202
- (R) RECORD INFORMATION PER BOOK 3 OF SUBDIVISION MAPS, PAGE 91
- (C/R) INFORMATION CALCULATED FROM RECORD INDICATED
- (M) MEASURED INFORMATION



SCALE 1 INCH = 40 FEET

SKETCH OF CENTERLINE  
OF EASEMENT LOCATION  
LOT 4, BOOK 3 OF MAPS, PAGE 91  
FOR CHRIS MEYERS  
WITHIN SECTION 36, T. 28N., R. 8E., MDM  
PLUMAS COUNTY CALIFORNIA  
SCALE 1 INCH = 40 FEET JULY 8, 2014

Tibbedeaux Surveying  
P.O. Box 1960  
Portola, CA 96122  
(530) 832-5772  
2014-11