

CORNER RECORD

Document Number 413

NW 1/4 of Sec. 33, T. 24 N., R. 11 E. MDM County of Plumas, California

Brief Legal Description Lot 220, Greenhorn Ranch Subdivision No. 2, 4 M 14

<b>X</b>	
Sec. <u>33</u>	

CORNER TYPE

Government Corner  Control   
 Meander  Property   
 Rancho  Other   
 Date of Survey 11/14/2014

COORDINATES (Optional)

N. \_\_\_\_\_  
 E. \_\_\_\_\_  
 Zone \_\_\_\_\_ Datum \_\_\_\_\_  
 Elev. \_\_\_\_\_

Corner- Left as found  Found and tagged  Established  Reestablished  Rebuilt

Identification and type of corner found: Evidence used to identify or procedure used to establish or reestablish the corner:  
Found 1" Iron Pipes shown on 4 M 14, as indicated on the attached sketch.

A description of the physical condition of the monument as found and as set or reset:  
Set 1/2" Rebar with Aluminum Cap stamped LS 8463 for NE corner of Lot 220.

SURVEYOR'S STATEMENT

This Corner Record was prepared by me or under my direction in conformance with the Land Surveyors' Act on November 16, 2014.

Signed Steven A. Alfred L.S. 8463  
 Steven A. Alfred

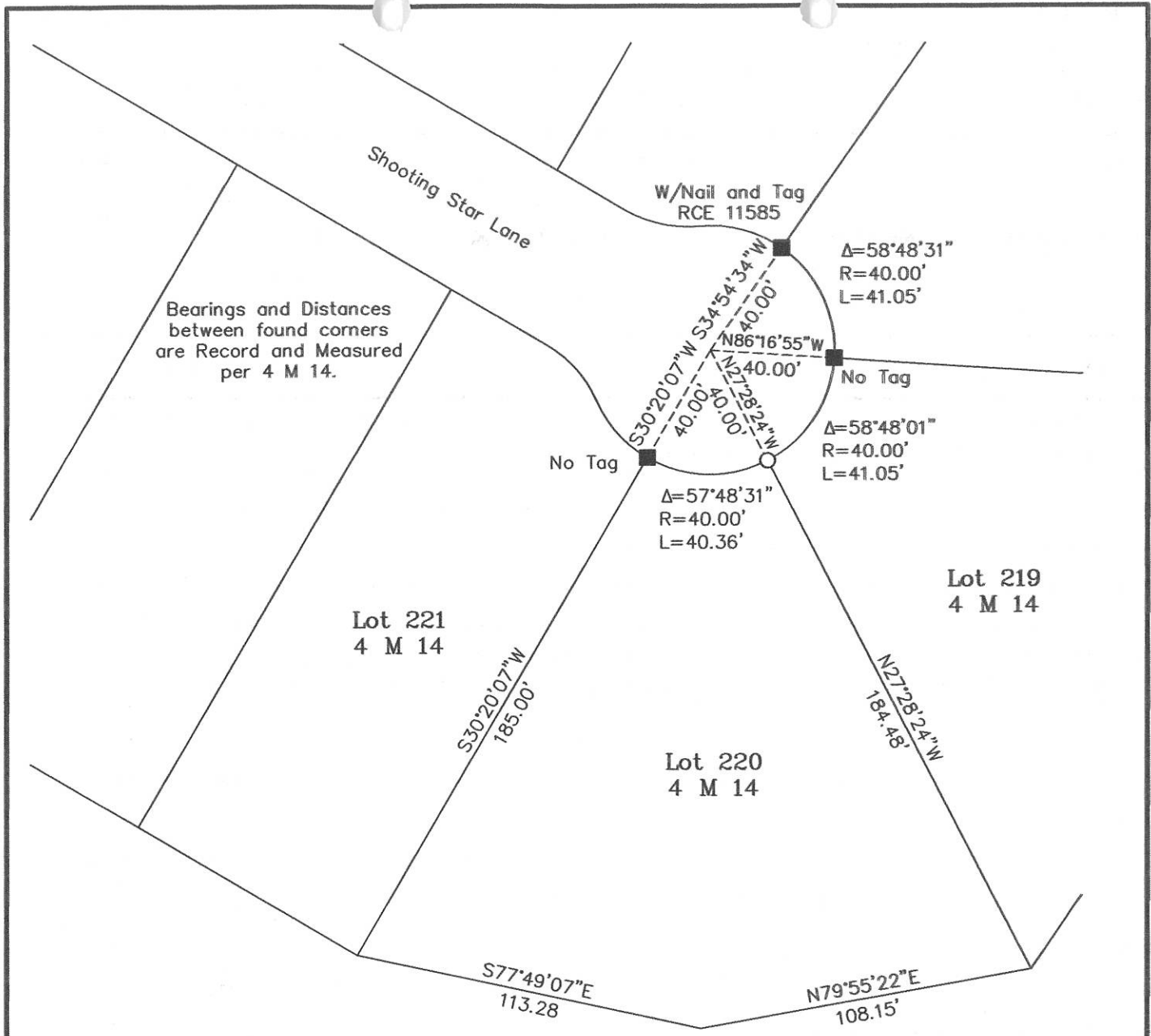


COUNTY SURVEYOR'S STATEMENT

This Corner Record was received December 2014 and examined and filed January 7th 2015.

Signed R Tom Spente Title \_\_\_\_\_

County Surveyor's Comment \_\_\_\_\_



**LEGEND**

- FOUND 1" I.P. per 4 M 14 as noted
- SET 1/2" Rebar with Aluminum Cap LS 8463

Steven A. Alfred LS 8463  
PROFESSIONAL LAND SURVEYOR

P.O. Box 916  
Loyalton, CA 96118  
(530) 826-4587

